

Tokyo Societal Development: Living Conditions and Cultural Syncretism

Post-WWII
(PART ONE)

California

California in 1940

- Population: 6.9 million people
 - Population of San Francisco: 634,536

California in 1960

- Population: 15.7 million people
 - Population of San Francisco: 740,316

Japan

Japan in 1940

- Population: 73.1 million people
 - Population of Tokyo: 7.36 million people

Japan in 1960

- Population: 93.4 million people
 - Population of Tokyo: 9.70 million people

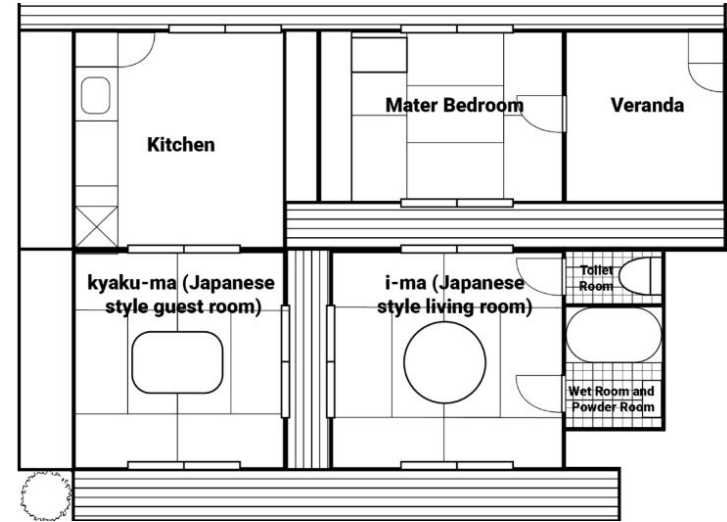
Typical Home Layout/Floor Plan 1940

United States



<https://clickamericana.com/topics/featured/start-living-in-a-thrift-home-1950>

Japan



<https://housingjapan.com/blog/typical-home-layouts-differences-between-japan-and-abroad/>

Infrastructure and Architecture 1940/1950

Japantown SF California



https://www.foundsf.org/Nihonjin-Machi,_San_Francisco%27s_Japanese_People_Town

Shibuya Tokyo Japan



<https://dannychoo.com/archive/en/posts/history-of-shibuya>

Predictions:

Throughout the late 1900s, do you think there will be increased amounts of cultural diffusion in these areas? Will one area be more influenced than the other?

Why?

Record your Predictions:

Tokyo Societal Development: Living Conditions and Cultural Syncretism

Post-WWII
(PART TWO)

Predictions:

Throughout the late 1900s, do you think there will be increased amounts of cultural diffusion in these areas? Will one area be more influenced than the other?

Why?

What did we get right?

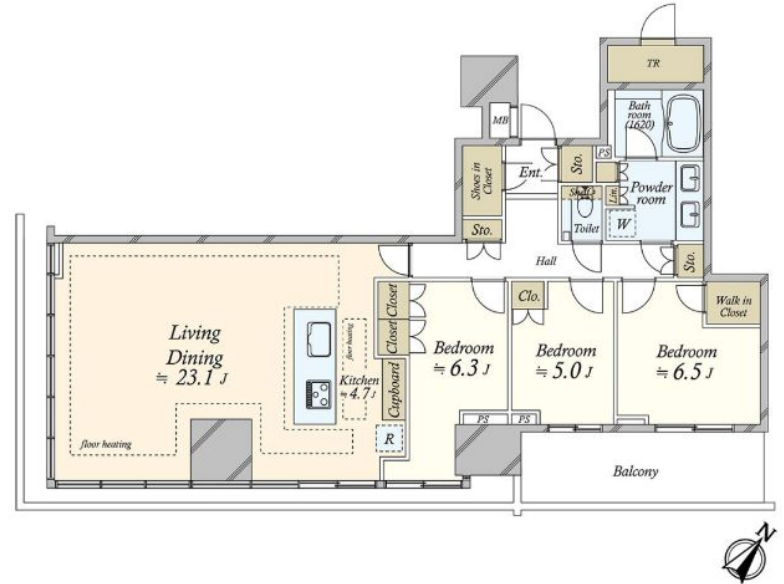
New Architecture 2025

Etta Apartments Japantown SF California



<https://ettasf.com/floorplans/>

Tokyu Land Corp. Brantz Apartment



<https://global.mf-realty.jp/en/residentialProperty/detail/FPATA01/>

Architecture 2025

Japantown SF California



https://www.foundsf.org/Nihonjin-Machi,_San_Francisco%27s_Japanese_People_Town

Shibuya Tokyo Japan



<https://dannychoo.com/archive/en/posts/history-of-shibuya>