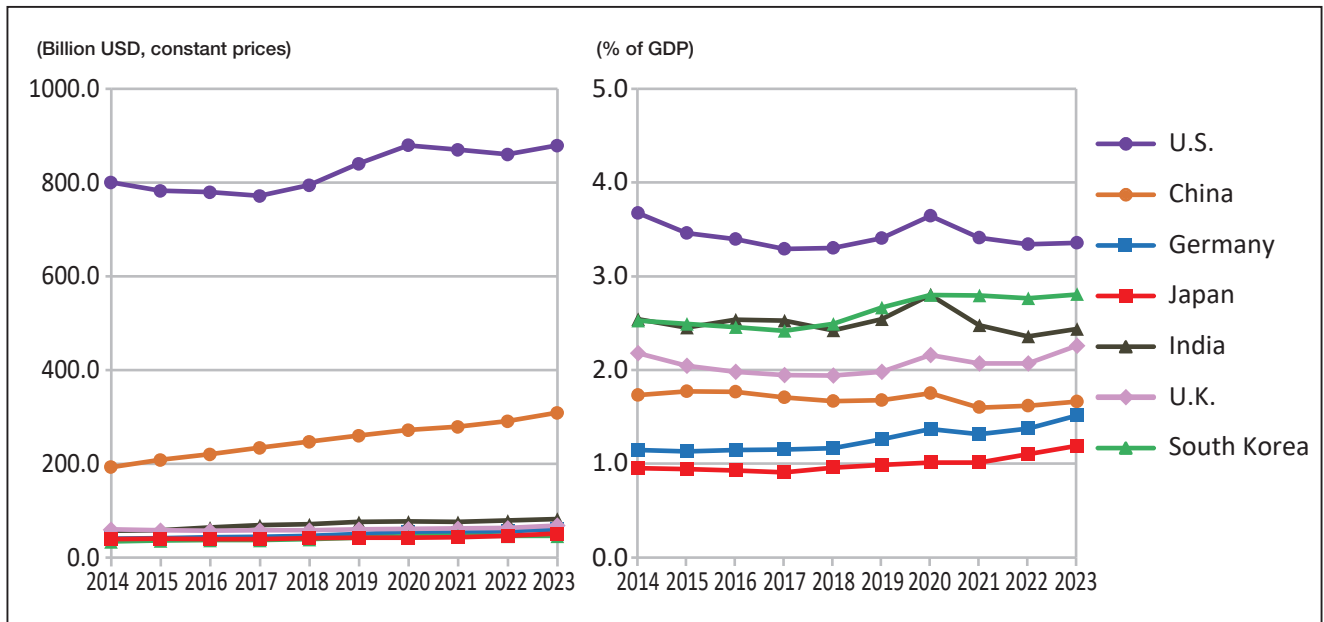


5-13 Military Expenditure

軍事支出



Notes: Figures are in billion USD at constant 2022 prices and exchange rates. All figures for the U.S. are for financial year, rather than calendar year. The figures for China and Russia (in the years 2022 and 2023) are estimates.

Source: SIPRI Military Expenditure Database <https://www.sipri.org/databases/milex>

Military Expenditure

(Billion USD, % of GDP)

	2014	2015	2016	2017	2018	2019	2020	2021	2022	2023
U.S.	800.8 (3.7%)	782.6 (3.5%)	780.2 (3.4%)	772.2 (3.3%)	795.4 (3.3%)	840.6 (3.4%)	880.2 (3.7%)	870.8 (3.4%)	860.7 (3.3%)	880.1 (3.4%)
China	193.6 (1.7%)	208.8 (1.8%)	220.8 (1.8%)	234.4 (1.7%)	248.2 (1.7%)	260.2 (1.7%)	272.5 (1.8%)	279.6 (1.6%)	292.0 (1.6%)	309.5 (1.7%)
Germany	41.3 (1.1%)	42.0 (1.1%)	43.9 (1.2%)	45.1 (1.2%)	46.4 (1.2%)	50.9 (1.3%)	54.2 (1.4%)	53.7 (1.3%)	56.2 (1.4%)	61.2 (1.5%)
Japan	39.7 (1.0%)	40.4 (0.9%)	40.2 (0.9%)	39.9 (0.9%)	41.9 (1.0%)	43.1 (1.0%)	42.7 (1.0%)	43.7 (1.0%)	46.9 (1.1%)	51.9 (1.2%)
India	58.1 (2.5%)	58.6 (2.5%)	64.6 (2.5%)	69.1 (2.5%)	71.6 (2.4%)	76.6 (2.5%)	77.1 (2.8%)	76.6 (2.5%)	80.0 (2.4%)	83.3 (2.4%)
U.K.	60.6 (2.2%)	58.3 (2.0%)	58.1 (2.0%)	58.2 (2.0%)	58.7 (1.9%)	61.1 (2.0%)	62.1 (2.2%)	63.0 (2.1%)	64.1 (2.1%)	69.2 (2.3%)
Russia	80.5 (4.1%)	86.7 (4.9%)	93.0 (5.4%)	75.4 (4.2%)	72.5 (3.7%)	75.8 (3.9%)	77.5 (4.2%)	79.1 (3.6%)	*102.4 (4.7%)	*126.5 (5.9%)
S. Korea	35.0 (2.5%)	36.4 (2.5%)	37.3 (2.5%)	38.0 (2.4%)	39.9 (2.5%)	43.1 (2.7%)	45.4 (2.8%)	47.4 (2.8%)	46.4 (2.8%)	46.9 (2.8%)
World Total	1,883	1,910	1,915	1,935	1,990	2,073	2,149	2,164	2,242	2,394

* Estimate

Notes: Figures are in billion USD at constant 2022 prices and exchange rates. All figures for the U.S. are for financial year, rather than calendar year.

Source: SIPRI Military Expenditure Database <https://www.sipri.org/databases/milex>