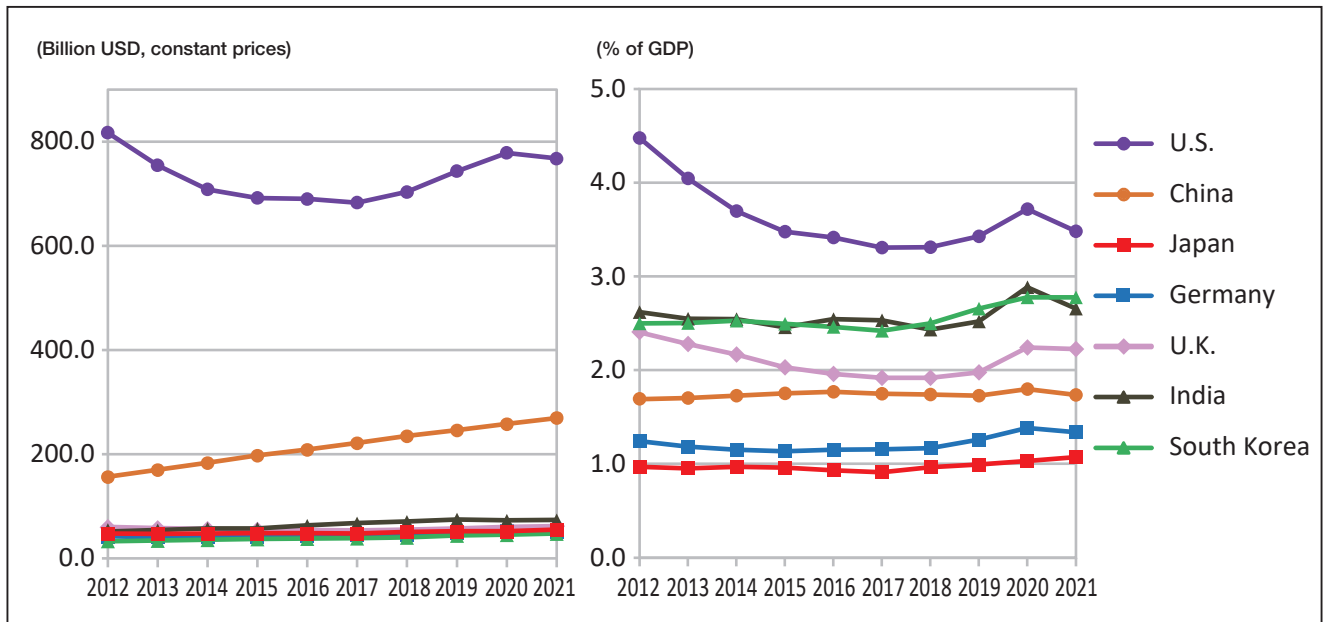


5-13 Military Expenditure

軍事支出



Notes: Figures are in billion USD at constant 2020 prices and exchange rates. All figures for the U.S. are for financial year, rather than calendar year. Figures for China and Russia in 2012 are estimates.

Source: SIPRI Military Expenditure Database <https://www.sipri.org/databases/milex>

Military Expenditure

(Billion USD, % of GDP)

	2012	2013	2014	2015	2016	2017	2018	2019	2020	2021
U.S.	817.5 (4.5%)	754.6 (4.0%)	708.2 (3.7%)	692.1 (3.5%)	690.0 (3.4%)	682.9 (3.3%)	703.4 (3.3%)	743.4 (3.4%)	778.4 (3.7%)	767.8 (3.5%)
*China	157.0 (1.7%)	169.7 (1.7%)	183.3 (1.7%)	197.7 (1.8%)	209.1 (1.8%)	221.9 (1.7%)	234.9 (1.7%)	246.4 (1.7%)	258.0 (1.8%)	270.0 (1.7%)
Japan	47.5 (1.0%)	47.2 (1.0%)	47.8 (1.0%)	48.6 (1.0%)	48.3 (0.9%)	48.0 (0.9%)	50.4 (1.0%)	52.0 (1.0%)	52.0 (1.0%)	55.8 (1.1%)
Germany	42.3 (1.2%)	40.8 (1.2%)	40.8 (1.1%)	41.5 (1.1%)	43.3 (1.1%)	44.5 (1.2%)	45.7 (1.2%)	50.1 (1.3%)	53.2 (1.4%)	52.5 (1.3%)
U.K.	60.2 (2.4%)	58.0 (2.3%)	57.0 (2.2%)	54.8 (2.0%)	54.6 (2.0%)	54.3 (1.9%)	55.0 (1.9%)	57.7 (2.0%)	60.7 (2.2%)	62.5 (2.2%)
India	55.1 (2.6%)	54.7 (2.5%)	57.6 (2.5%)	57.6 (2.5%)	63.5 (2.5%)	67.9 (2.5%)	70.9 (2.4%)	75.2 (2.5%)	72.9 (2.9%)	73.6 (2.7%)
Russia	*57.0 (3.7%)	59.8 (3.9%)	64.0 (4.1%)	69.0 (4.9%)	74.0 (5.4%)	60.0 (4.2%)	57.7 (3.7%)	60.3 (3.8%)	61.7 (4.3%)	63.5 (4.1%)
S. Korea	33.2 (2.5%)	34.2 (2.5%)	35.6 (2.5%)	37.0 (2.5%)	37.9 (2.5%)	38.6 (2.4%)	40.5 (2.5%)	43.6 (2.7%)	45.5 (2.8%)	47.7 (2.8%)
World Total	1,791	1,757	1,751	1,778	1,787	1,810	1,859	1,932	1,992	2,007

* Estimate

Notes: Figures are in billion USD at constant 2020 prices and exchange rates. All figures for the U.S. are for financial year, rather than calendar year.

Source: SIPRI Military Expenditure Database <https://www.sipri.org/databases/milex>