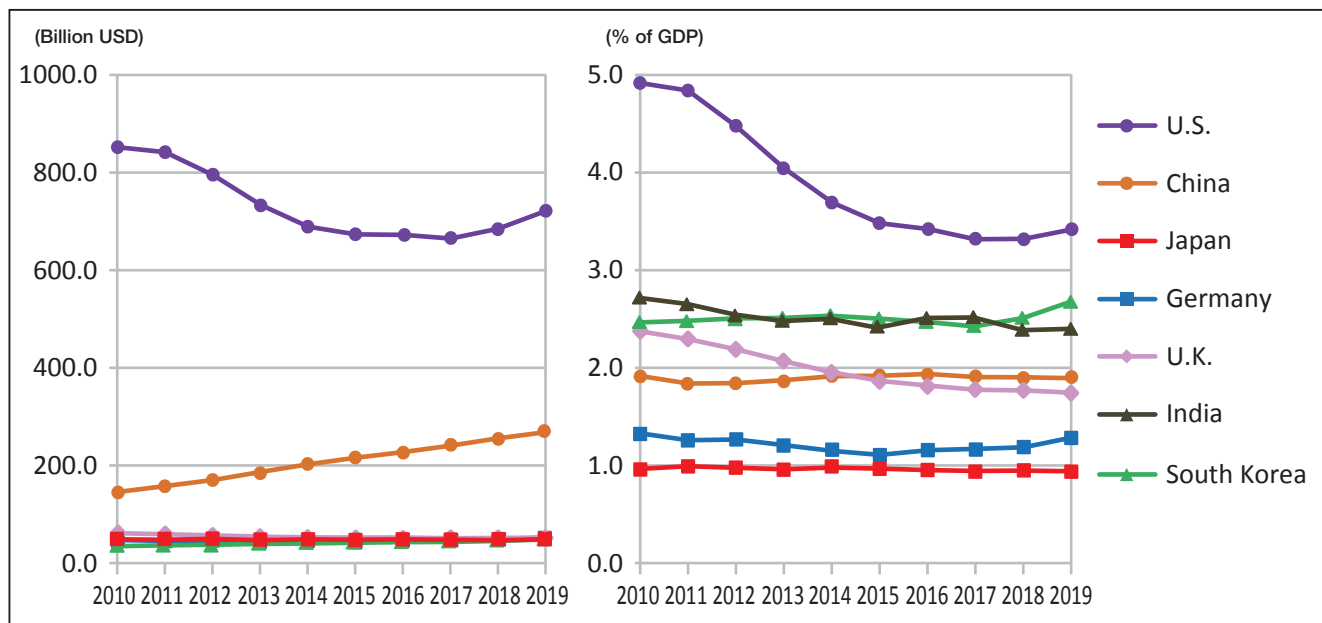


5-13 Military Expenditure

軍事支出



Notes: Figures are in billion USD at constant 2018 prices and exchange rates. Figures of China and Russia from 2010-2012 are SIPRI estimates. Figure of U.K. in 2019 is uncertain.

Source: SIPRI Military Expenditure Database 2020 <https://www.sipri.org/databases/milex>

Military Expenditure

(Billion USD, % of GDP)

	2010	2011	2012	2013	2014	2015	2016	2017	2018	2019
U.S.	849.9 (4.9%)	839.8 (4.8%)	793.2 (4.5%)	732.1 (4.0%)	687.1 (3.7%)	671.5 (3.5%)	669.4 (3.4%)	662.6 (3.3%)	682.5 (3.3%)	718.7 (3.4%)
China	143.9 (1.9%)	155.2 (1.8%)	168.5 (1.8%)	184.2 (1.9%)	200.0 (1.9%)	213.5 (1.9%)	225.6 (1.9%)	238.5 (1.9%)	253.5 (1.9%)	266.4 (1.9%)
Japan	45.6 (1.0%)	46.2 (1.0%)	45.7 (1.0%)	45.5 (1.0%)	46.0 (1.0%)	46.8 (1.0%)	46.5 (1.0%)	46.5 (0.9%)	46.6 (0.9%)	46.6 (0.9%)
Germany	44.5 (1.3%)	43.3 (1.2%)	43.6 (1.3%)	42.0 (1.2%)	41.0 (1.1%)	40.9 (1.1%)	43.8 (1.1%)	45.3 (1.2%)	46.5 (1.2%)	51.2 (1.3%)
U.K.	59.0 (2.4%)	56.8 (2.3%)	54.5 (2.2%)	52.4 (2.1%)	51.0 (1.9%)	49.8 (1.9%)	49.9 (1.8%)	49.4 (1.8%)	49.9 (1.8%)	49.9 (1.7%)
India	51.7 (2.7%)	52.2 (2.7%)	52.0 (2.5%)	51.6 (2.5%)	54.3 (2.5%)	54.3 (2.4%)	59.8 (2.5%)	64.6 (2.5%)	66.3 (2.4%)	70.8 (2.4%)
Russia	49.2 (3.6%)	52.5 (3.4%)	60.8 (3.7%)	63.8 (3.8%)	68.4 (4.1%)	73.7 (4.9%)	79.0 (5.5%)	63.7 (4.2%)	61.4 (3.7%)	64.1 (3.9%)
S. Korea	34.0 (2.5%)	34.4 (2.5%)	35.3 (2.5%)	36.4 (2.5%)	37.8 (2.5%)	39.3 (2.5%)	40.3 (2.5%)	41.0 (2.4%)	43.1 (2.5%)	46.3 (2.7%)
World total	1,793.5	1,798.5	1,782.6	1,755.6	1,749.6	1,776.0	1,784.8	1,807.3	1,854.8	1,922.1

Notes: Figures are in billion USD at constant 2018 prices and exchange rates. Figures of China and Russia from 2010-2012 are SIPRI estimates. Figure of U.K. in 2019 is uncertain.

Source: SIPRI Military Expenditure Database 2020 <https://www.sipri.org/databases/milex>