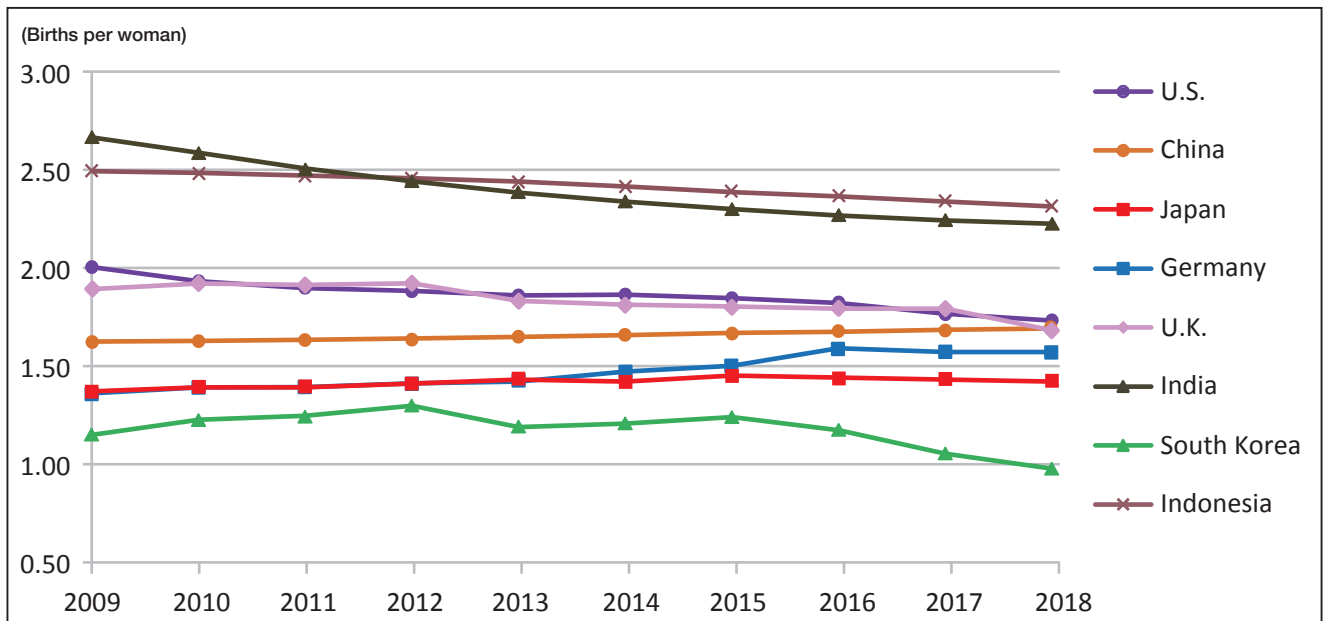


## 2-4 Total Fertility Rate

合計特殊出生率



Note: Total fertility rate represents the number of children that would be born to a woman if she were to live to the end of her childbearing years and bear children in accordance with age-specific fertility rates of the specified year.

Source: World Bank <http://data.worldbank.org/indicator/SP.DYN.TFRT.IN>

## Total Fertility Rate

(Births per woman)

	2009	2010	2011	2012	2013	2014	2015	2016	2017	2018
U.S.	2.00	1.93	1.89	1.88	1.86	1.86	1.84	1.82	1.77	1.73
China	1.62	1.63	1.63	1.64	1.65	1.66	1.67	1.68	1.68	1.69
<b>Japan</b>	<b>1.37</b>	<b>1.39</b>	<b>1.39</b>	<b>1.41</b>	<b>1.43</b>	<b>1.42</b>	<b>1.45</b>	<b>1.44</b>	<b>1.43</b>	<b>1.42</b>
Germany	1.36	1.39	1.39	1.41	1.42	1.47	1.50	1.59	1.57	1.57
U.K.	1.89	1.92	1.91	1.92	1.83	1.81	1.80	1.79	1.74	1.68
India	2.66	2.58	2.51	2.44	2.38	2.33	2.30	2.27	2.24	2.22
S. Korea	1.15	1.23	1.24	1.30	1.19	1.21	1.24	1.17	1.05	0.98
Indonesia	2.49	2.48	2.47	2.46	2.44	2.41	2.39	2.36	2.34	2.31

Note: Total fertility rate represents the number of children that would be born to a woman if she were to live to the end of her childbearing years and bear children in accordance with age-specific fertility rates of the specified year.

Source: World Bank <http://data.worldbank.org/indicator/SP.DYN.TFRT.IN>