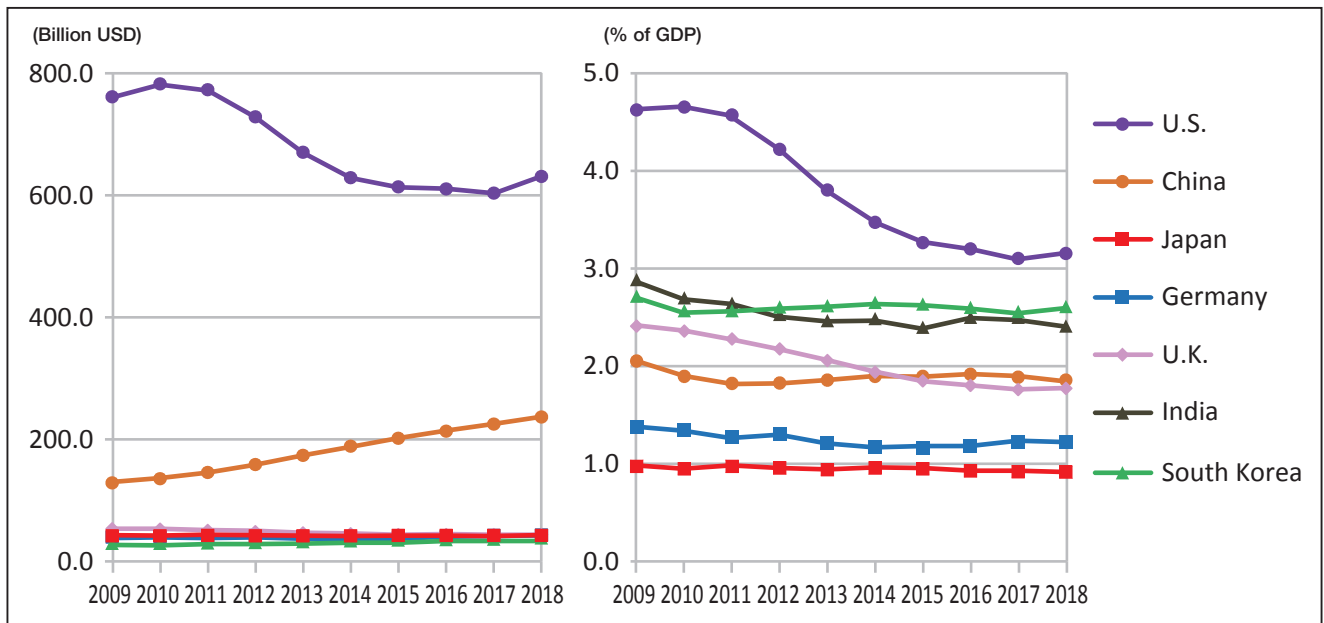


## 5-13 Military Expenditure

## 軍事支出



Notes: Figures are in billion USD at constant 2017 prices and exchange rates. Figures of China are SIPRI estimates.

Source: SIPRI Military Expenditure Database 2019 <https://www.sipri.org/databases/milex>

## Military Expenditure

(Billion USD, % of GDP)

	2009	2010	2011	2012	2013	2014	2015	2016	2017	2018
U.S.	763.9 (4.6%)	784.8 (4.7%)	775.2 (4.6%)	731.1 (4.2%)	673.1 (3.8%)	631.5 (3.5%)	616.5 (3.3%)	612.9 (3.2%)	605.8 (3.1%)	633.6 (3.2%)
China	131.1 (2.1%)	137.9 (1.9%)	148.7 (1.8%)	161.4 (1.8%)	176.5 (1.9%)	191.6 (1.9%)	204.2 (1.9%)	215.7 (1.9%)	227.8 (1.9%)	239.2 (1.9%)
Japan	44.3 (1.0%)	44.5 (1.0%)	45.1 (1.0%)	44.6 (1.0%)	44.4 (1.0%)	44.8 (1.0%)	45.6 (1.0%)	45.4 (0.9%)	45.4 (0.9%)	45.4 (0.9%)
Germany	42.4 (1.4%)	42.8 (1.4%)	41.6 (1.3%)	42.6 (1.3%)	40.1 (1.2%)	40.0 (1.2%)	41.2 (1.2%)	42.9 (1.2%)	45.4 (1.2%)	46.2 (1.2%)
U.K.	56.2 (2.4%)	55.4 (2.4%)	53.4 (2.3%)	51.2 (2.2%)	49.2 (2.1%)	47.9 (1.9%)	46.8 (1.9%)	46.9 (1.8%)	46.4 (1.8%)	46.9 (1.8%)
India	51.6 (2.9%)	51.8 (2.7%)	52.3 (2.7%)	52.1 (2.5%)	51.7 (2.5%)	54.2 (2.5%)	54.7 (2.4%)	60.3 (2.5%)	64.6 (2.5%)	66.6 (2.4%)
Russia	50.4 (3.9%)	51.4 (3.6%)	54.9 (3.4%)	63.6 (3.7%)	66.7 (3.8%)	71.5 (4.1%)	77.0 (4.9%)	82.6 (5.5%)	66.5 (4.2%)	64.2 (3.9%)
S. Korea	32.2 (2.7%)	32.4 (2.6%)	32.9 (2.6%)	33.7 (2.6%)	34.8 (2.6%)	36.1 (2.7%)	37.5 (2.6%)	38.5 (2.6%)	39.2 (2.6%)	41.2 (2.6%)
World total	1,688.7	1,722.0	1,727.6	1,715.3	1,690.9	1,687.4	1,715.3	1,715.3	1,734.6	1,780.0

Notes: Figures are in billion USD at constant 2017 prices and exchange rates. Figures of China are SIPRI estimates.

Source: SIPRI Military Expenditure Database 2019 <https://www.sipri.org/databases/milex>