

Japan and the World 2016/17

The background features four globes arranged horizontally, each with a different color: red, blue, green, and orange. A white line graphic, resembling a stylized staircase or a path, connects the globes and extends upwards and downwards. The top part of the image has a blue background, and the bottom part has a white background.

A Pocket Guide in Figures

Japan and the World 2016/17

A Pocket Guide in Figures

Japan and the World 2016/17
A Pocket Guide in Figures

Published by Keizai Koho Center
(Japan Institute for Social and Economic Affairs)
Keidanren Kaikan 19F, 1-3-2 Otemachi,
Chiyoda-ku, Tokyo 100-0004 Japan

Data researched and compiled by
Tatsuya Bessho, Takanori Ito, Ikuyo Watanabe and Taylor Wettach.

Copyright © Keizai Koho Center

All rights reserved. No part of this publication may be reproduced without the prior permission of the publisher.

The majority of the statistics contained in this data book are taken directly from published sources and reformatted by Keizai Koho Center. Consequently, neither Keizai Koho Center nor the compilers endorse the validity of the original data.

Although the greatest care has been taken in compiling this book, any errors will be corrected and posted on Keizai Koho Center's website.
www.kkc.or.jp/english/

Printed in Japan by Hikari Shashin Printing Co., Ltd.

CONTENTS

Chapter 1	Economic and Financial Indicators	
1-1	GDP (Gross Domestic Product) 国内総生産	2
1-2	GDP Growth Rates GDP 成長率	4
1-3	GDP Per Capita 一人当たり GDP	6
1-4	GDP Composition by Industries (2014) 産業別 GDP 構成比	8
1-5	GDP Composition by Expenditures (2014) 支出要素別 GDP 構成比	10
1-6	Gross National Income 国民総所得	12

1-7	Exchange Rates 為替レート	13
1-8	Stock Prices and Indices 株価・株価指数	14
1-9	Long-term Interest Rates 長期金利	16
1-10	Industrial Production Index 鉱工業生産指数	18
1-11	Consumer Price Indices (All items) 消費者物価指数 (総合)	20
1-12	Household Final Consumption Expenditure 家計最終消費支出	22
1-13	Crude Oil Price 原油価格	24
	(Editor's choice) Olympic Medal Count in Rio 2016 2016 リオ五輪メダル数	25

Chapter 2 Population and Labor Markets

2-1	Population 人口	26
2-2	Population (Ages 15-64) 人口 (15 ~ 64 歳)	28
2-3	Population (Ages 65 and Older) 人口 (65 歳以上)	30
2-4	Total Fertility Rate 合計特殊出生率	32

2-5	Unemployment Rate 失業率	34
2-6	Employment Rate by Age and Gender 年齢・性別雇用率	36
2-7	Part-time Employment Rate by Age and Gender 年齢・性別短時間雇用率	37
2-8	Labor Productivity and Index 労働生産性・指数	38

Chapter 3 Trade and Investment

3-1	Current Account Balance 経常収支	40
3-2	Trade Balance (Japan) 貿易収支 (日本)	42
3-3	Japan's Major Trading Partners 日本の主な貿易相手	44
3-4	Trade Balance (U.S.) 貿易収支 (米国)	46
3-5	Trade Balance (China) 貿易収支 (中国)	47
3-6	Trade Balance (Germany) 貿易収支 (ドイツ)	48
3-7	Trade Balance (U.K.) 貿易収支 (イギリス)	49
3-8	Trade Balance (South Korea) 貿易収支 (韓国)	50
3-9	Trade and Investment (U.S.-Japan-China) 日米中の貿易・投資	51
3-10	Outward Foreign Direct Investment (FDI) (Stock) 対外直接投資残高	52

3-11	Outward FDI (Flow) 対外直接投資フロー	54
3-12	Inward FDI (Stock) 対内直接投資残高	56
3-13	Inward FDI (Flow) 対内直接投資フロー	58
3-14	FDI (Japan) 直接投資 (日本)	60
3-15	FDI (U.S.) 直接投資 (米国)	62
3-16	FDI (China) 直接投資 (中国)	64
3-17	FDI (ASEAN) 直接投資 (ASEAN)	66
3-18	FDI (EU) 直接投資 (EU)	68
3-19	Outbound M&A 対外 M&A	70
3-20	Inbound M&A 対内 M&A	71
3-21	Employment and Exports by Foreign Affiliated Companies in the U.S. 在米外資系企業の雇用と輸出額	72
	(Editor's choice) Major League Career Hits Leaders MLB 通産安打数	73

Chapter 4 Education and People Exchange

4-1	Inbound Tourism 外国人訪問者数	74
4-2	Foreign Visitors to Japan 訪日外客数	76
4-3	Outbound Tourism 外国旅行者数	78
4-4	Japanese Outbound Travelers 日本人出国者数	80
4-5	Foreign Students by Destination (2013) 各国の留学生受入れ数	82
4-6	Foreign Students by Origin (2013) 各国の海外留学生数	83
4-7	Foreign Students in Japan 日本への留学生	84

4-8	Overseas Japanese in Higher Education Institutions 海外高等教育機関への日本人留学生	86
4-9	International Students in the U.S. (2014-2015) 在米留学生	88
4-10	Japanese Students in the U.S. by Academic Level 学位別在米日本人留学生	90
4-11	Overseas Japanese in Elementary and Middle Schools 在留邦人子女数（小中学生）	92
4-12	International Scholars in the U.S. 在米外国人研究者数	94
4-13	University Rankings (2015-2016) 大学ランキング	96
4-14	TOEFL Score (2015) 国別 TOEFL スコア	97

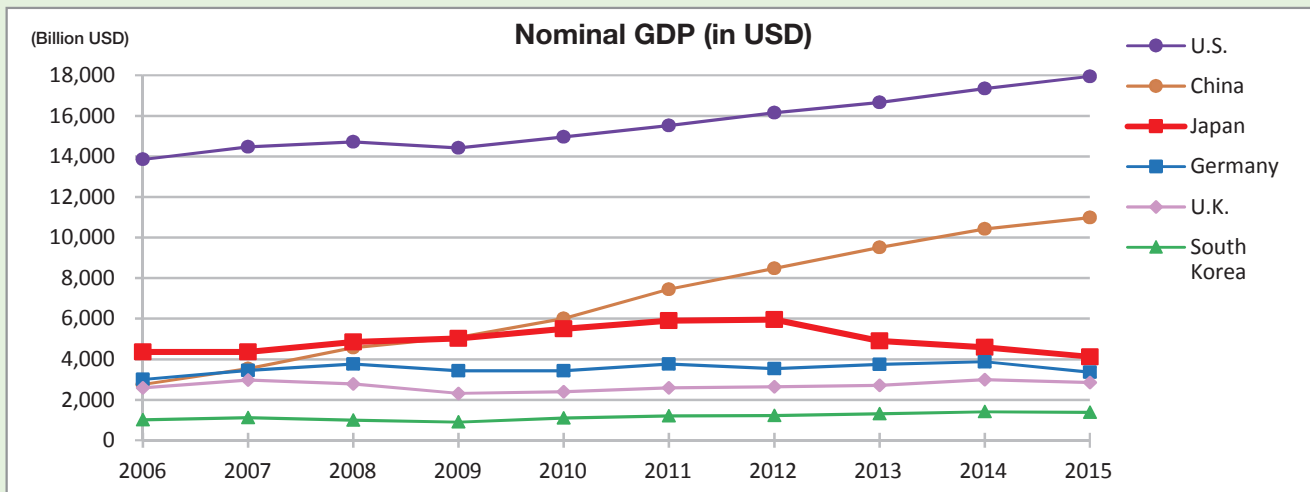
Chapter 5 Government Budget, Tax and Other Data

5-1	General Government Spending to GDP 一般政府支出 (对 GDP 比)	98
5-2	Government Budget Balance to GDP 財政収支 (对 GDP 比)	100
5-3	Effective Corporate Tax Rates 法人実効税率	102
5-4	Top Marginal Income Tax Rates (2015) 個人最高税率	103
5-5	Value-Added Tax Rates 付加価値税率	104
5-6	National Burden Ratio (2013) 国民負担率	105

5-7	Foreign Exchange Reserves 外貨準備高	106
5-8	Military Expenditure 軍事支出	108
5-9	ODA (Official Development Assistance) ODA 純支出額	110
5-10	Gross Domestic Expenditure on R&D by Source (2014) 各国の研究開発投資 (拠出元別)	112
5-11	Land Area 国土面積	113

1-1 GDP (Gross Domestic Product)

国内総生産



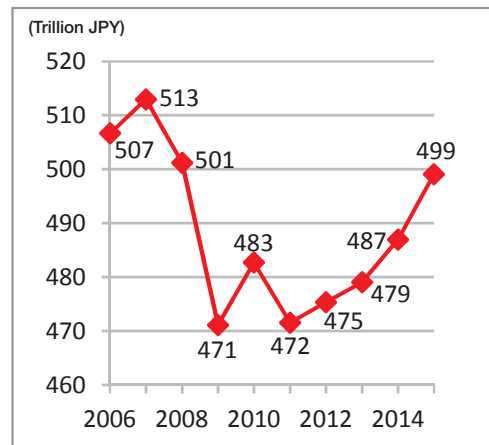
Source: IMF
<http://www.imf.org/external/pubs/ft/weo/2016/01/weodata/index.aspx>

Nominal GDP (in USD)

	2006	2007	2008	2009	2010	2011	2012	2013	2014	2015
1 U.S.	13,856	14,478	14,719	14,419	14,964	15,518	16,155	16,663	17,348	17,947
2 China	2,752	3,543	4,565	5,071	6,005	7,442	8,471	9,519	10,431	10,983
3 Japan	4,357	4,356	4,849	5,035	5,499	5,909	5,957	4,909	4,596	4,123
4 Germany	3,005	3,445	3,770	3,427	3,423	3,761	3,542	3,746	3,874	3,358
5 U.K.	2,588	2,970	2,788	2,316	2,403	2,596	2,639	2,713	2,992	2,849
6 France	2,327	2,667	2,937	2,701	2,652	2,865	2,683	2,811	2,834	2,422
7 India	949	1,239	1,224	1,365	1,708	1,823	1,829	1,863	2,043	2,091
8 Italy	1,944	2,206	2,402	2,191	2,129	2,278	2,074	2,131	2,142	1,816
9 Brazil	1,108	1,397	1,696	1,669	2,209	2,612	2,460	2,465	2,417	*1,773
10 Canada	1,316	1,465	1,549	1,371	1,613	1,789	1,824	1,837	1,784	1,552
11 S. Korea	1,012	1,123	1,002	902	1,094	1,202	1,223	1,306	1,410	*1,377

Note: * estimate.
 Source: IMF
<http://www.imf.org/external/pubs/ft/weo/2016/01/weodata/index.aspx>

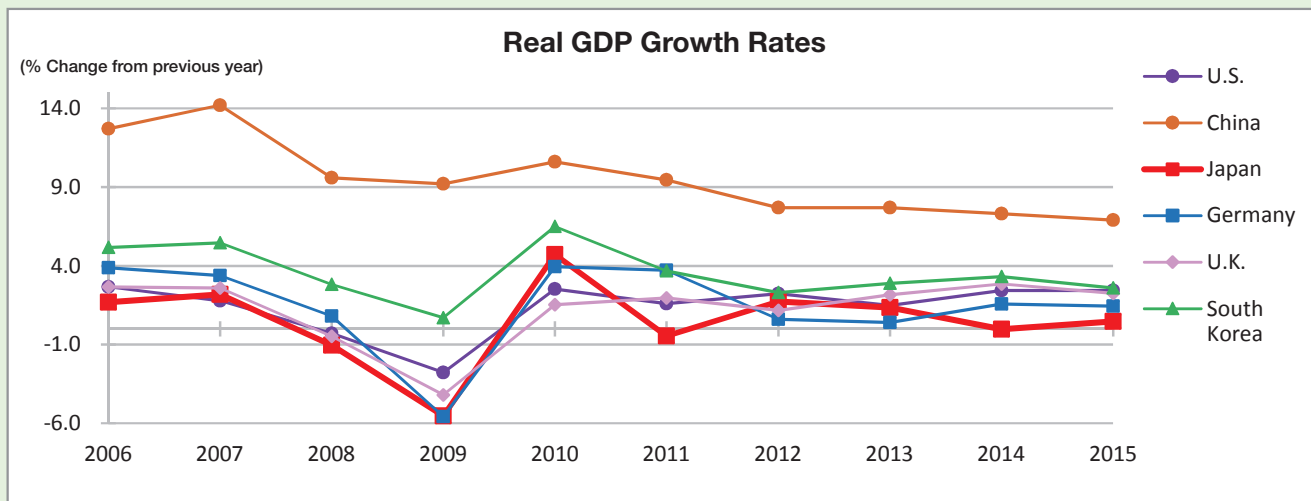
Japan's Nominal GDP (in JPY)



Source: Cabinet Office
http://www.esri.cao.go.jp/jp/sna/data/data_list/sokuhou/files/2015/toukei_2015.html

1-2 GDP Growth Rates

GDP成長率



Source: IMF
<http://www.imf.org/external/pubs/ft/weo/2016/01/weodata/index.aspx>

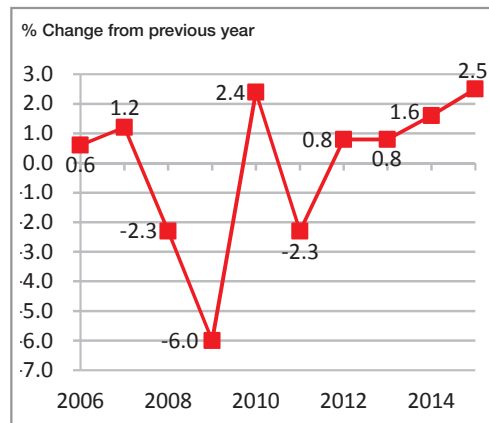
Real GDP Growth Rates

(% Change from previous year)

	2006	2007	2008	2009	2010	2011	2012	2013	2014	2015
U.S.	2.7	1.8	-0.3	-2.8	2.5	1.6	2.2	1.5	2.4	2.4
China	12.7	14.2	9.6	9.2	10.6	9.5	7.7	7.7	7.3	6.9
Japan	1.7	2.2	-1.0	-5.5	4.7	-0.5	1.7	1.4	0.0	0.5
Germany	3.9	3.4	0.8	-5.6	3.9	3.7	0.6	0.4	1.6	1.5
U.K.	2.7	2.6	-0.5	-4.2	1.5	2.0	1.2	2.2	2.9	2.2
France	2.4	2.4	0.2	-2.9	2.0	2.1	0.2	0.7	0.2	1.1
India	9.3	9.8	3.9	8.5	10.3	6.6	5.6	6.6	7.2	7.3
Italy	2.0	1.5	-1.1	-5.5	1.7	0.6	-2.8	-1.7	-0.3	0.8
Brazil	4.0	6.1	5.1	-0.1	7.5	3.9	1.9	3.0	0.1	*-3.8
Canada	2.6	2.1	1.0	-3.0	3.1	3.1	1.7	2.2	2.5	1.2
S. Korea	5.2	5.5	2.8	0.7	6.5	3.7	2.3	2.9	3.3	* 2.6

Note: * estimate.
 Source: IMF
<http://www.imf.org/external/pubs/ft/weo/2016/01/weodata/index.aspx>

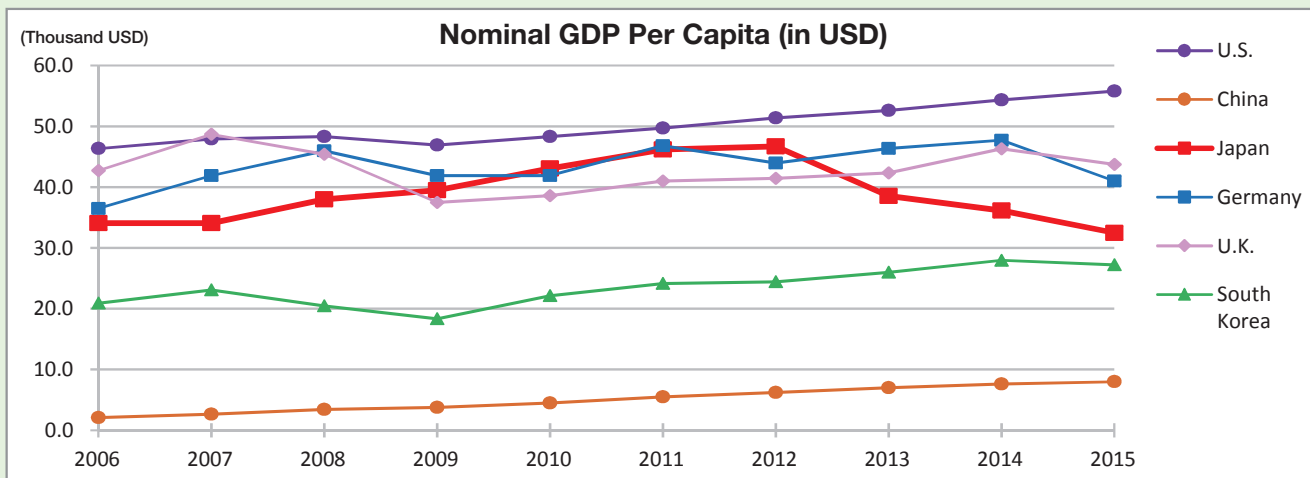
Japan's Nominal GDP Growth Rate



Source: Cabinet Office
http://www.esri.cao.go.jp/jp/sna/data/data_list/sokuhou/files/2015/toukei_2015.html

1-3 GDP Per Capita

一人当たりGDP



Source: IMF

<http://www.imf.org/external/pubs/ft/weo/2016/01/weodata/index.aspx>

Nominal GDP Per Capita (in USD)

(Thousand USD)

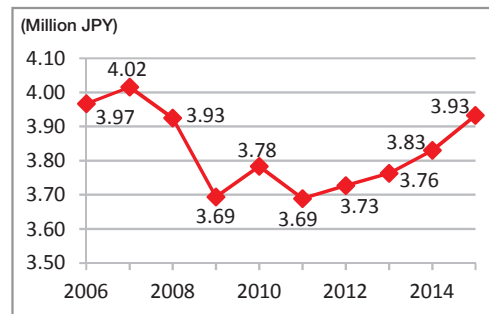
	2006	2007	2008	2009	2010	2011	2012	2013	2014	2015
U.S.	46.4	48.0	48.3	46.9	48.3	49.7	51.4	52.6	54.4	55.8
China	2.1	2.7	3.4	3.8	4.5	5.5	6.3	7.0	7.6	8.0
Japan	34.1	34.1	38.0	39.5	43.1	46.2	46.7	38.6	36.2	32.5
Germany	36.5	41.9	46.0	41.9	41.9	46.8	44.0	46.4	47.7	*41.0
U.K.	42.7	48.7	45.4	37.5	38.6	41.0	41.4	42.3	46.3	43.8
S. Korea	20.9	23.1	20.5	18.3	22.2	24.2	24.5	26.0	28.0	*27.2

Note: * estimate.

Source: IMF

<http://www.imf.org/external/pubs/ft/weo/2016/01/weodata/index.aspx>

Japan's Nominal GDP Per Capita (in JPY)



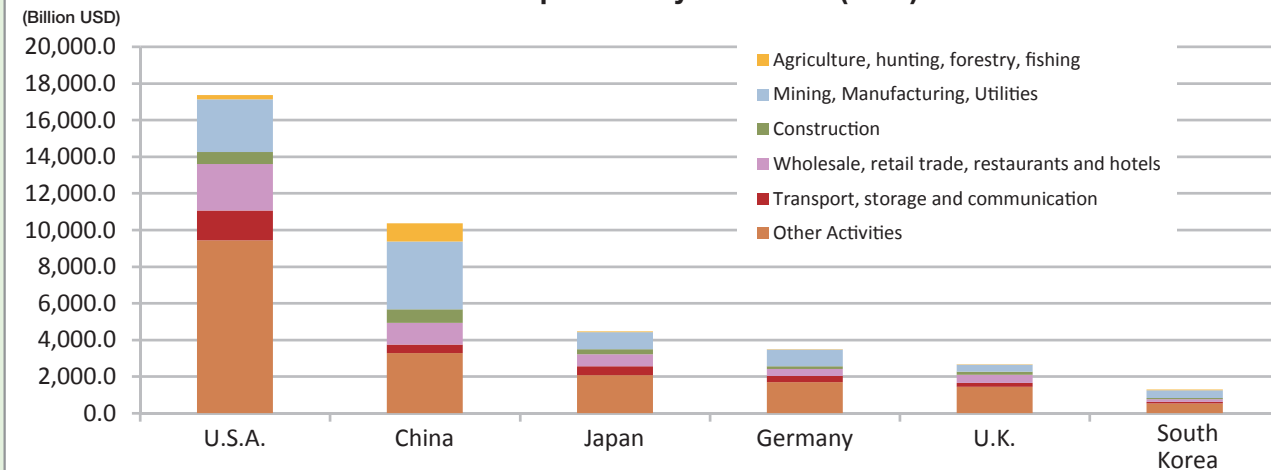
Source: IMF

<http://www.imf.org/external/pubs/ft/weo/2016/01/weodata/index.aspx>

1-4 GDP Composition by Industries

産業別GDP構成比

GDP Composition by Industries (2014)



Source: UN
<http://unstats.un.org/unsd/snaama/dnIList.asp>

GDP Composition by Industries (2014)

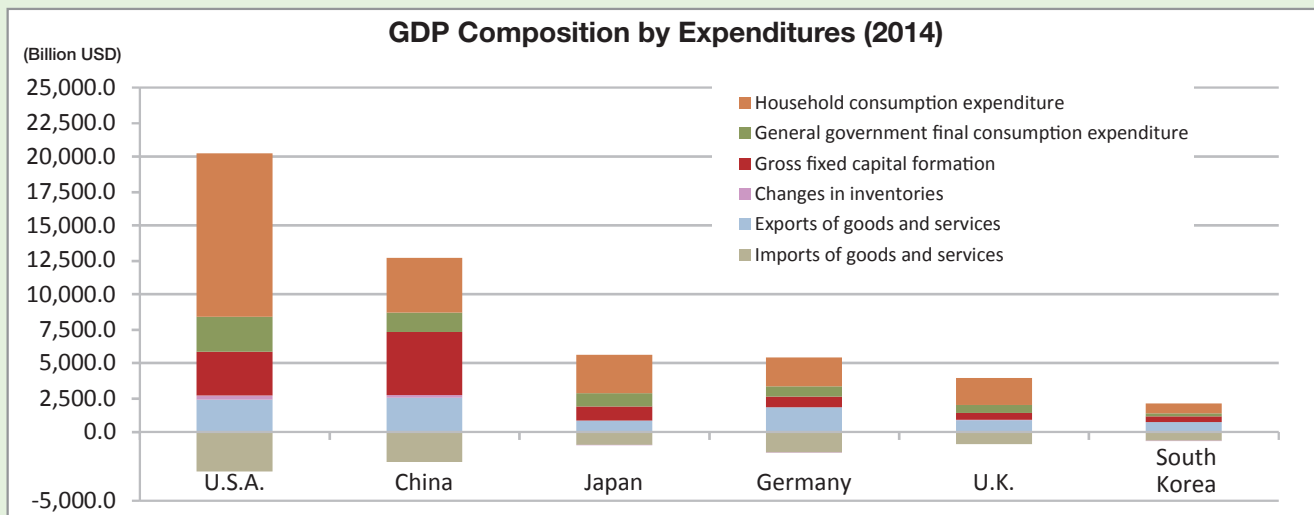
(Billion USD, % of GDP)

	Agriculture, hunting, forestry, fishing		Mining, Manufacturing, Utilities		Construction		Wholesale, retail trade, restaurants and hotels		Transport, storage and communication		Other Activities		Total	
U.S.	215.4	(1.2%)	2,875.3	(16.6%)	664.0	(3.8%)	2,530.3	(14.6%)	1,628.1	(9.4%)	9,435.2	(54.4%)	17,348.3	(100%)
China	979.2	(9.5%)	3,711.1	(35.8%)	729.1	(7.0%)	1,195.0	(11.5%)	468.0	(4.5%)	3,270.2	(31.6%)	10,352.6	(100%)
Japan	54.6	(1.2%)	933.2	(20.9%)	261.8	(5.9%)	658.5	(14.7%)	478.3	(10.7%)	2,080.9	(46.6%)	4,467.4	(100%)
Germany	23.8	(0.7%)	895.3	(25.7%)	160.2	(4.6%)	376.3	(10.8%)	333.0	(9.6%)	1,691.6	(48.6%)	3,480.1	(100%)
U.K.	18.2	(0.7%)	392.5	(14.7%)	165.5	(6.2%)	433.9	(16.3%)	214.7	(8.1%)	1,438.1	(54.0%)	2,662.9	(100%)
S. Korea	30.1	(2.3%)	428.2	(33.3%)	63.6	(4.9%)	147.6	(11.5%)	94.0	(7.3%)	522.7	(40.6%)	1,286.2	(100%)

Source: UN
<http://unstats.un.org/unsd/snaama/dnIList.asp>

1-5 GDP Composition by Expenditures

支出要素別GDP構成比



Source: UN

<http://unstats.un.org/unsd/snaama/dnIList.asp>**GDP Composition by Expenditures (2014)**

(Billion USD, % of GDP)

	Household consumption expenditure	General government final consumption expenditure	Gross fixed capital formation	Changes in inventories	Exports of goods and services	Imports of goods and services	Total
U.S.	11,865.9 (68.4%)	2,556.3 (14.7%)	3,170.3 (18.3%)	285.6 (1.6%)	2,341.9 (13.5%)	-2,871.9 (-16.6%)	17,348.1 (100%)
China	3,954.3 (37.9%)	1,408.4 (13.5%)	4,584.4 (44.0%)	197.7 (1.9%)	2,475.7 (23.7%)	-2,191.4 (-21.0%)	10,430.6 (100%)
Japan	2,789.2 (60.6%)	950.7 (20.7%)	1,028.8 (22.4%)	-23.8 (-0.5%)	815.3 (17.7%)	-958.4 (-20.8%)	4,602.4 (100%)
Germany	2,112.4 (54.6%)	748.3 (19.3%)	776.3 (20.1%)	-29.2 (-0.8%)	1,768.8 (45.7%)	-1,508.2 (-39.0%)	3,868.3 (100%)
U.K.	1,934.5 (64.7%)	587.9 (19.7%)	503.7 (16.9%)	19.3 (0.6%)	847.7 (28.4%)	-904.6 (-30.3%)	2,988.9 (100%)
S. Korea	711.2 (50.4%)	212.8 (15.1%)	412.4 (29.2%)	-1.1 (-0.1%)	714.2 (50.6%)	-639.0 (-45.3%)	1,410.4 (100%)

Source: UN

<http://unstats.un.org/unsd/snaama/dnIList.asp>

1-6 Gross National Income

国民総所得

(Billion USD)

Nominal Gross National Income

	2005	2006	2007	2008	2009	2010	2011	2012	2013	2014
1 U.S.	13,222	14,141	14,586	14,791	14,494	15,121	15,803	16,596	17,091	17,586
2 China	2,252	2,725	3,531	4,587	5,051	6,014	7,422	8,442	9,413	10,321
3 Japan	4,678	4,481	4,504	5,012	5,175	5,643	6,090	6,143	5,100	4,780
4 Germany	2,887	3,054	3,491	3,789	3,495	3,485	3,852	3,624	3,827	3,950
5 U.K.	2,478	2,618	3,003	2,803	2,323	2,435	2,628	2,632	2,686	2,936
6 France	2,242	2,372	2,719	2,986	2,742	2,701	2,928	2,719	2,854	2,888
7 Brazil	857	1,062	1,339	1,614	1,588	2,173	2,571	2,381	2,356	2,368
8 Italy	1,856	1,950	2,205	2,369	2,184	2,121	2,271	2,070	2,128	2,136
9 India	828	942	1,234	1,217	1,357	1,691	1,800	1,804	1,840	2,018
10 Russia	745	961	1,271	1,614	1,183	1,478	1,971	2,102	2,151	1,964
11 Canada	1,140	1,290	1,436	1,519	1,347	1,583	1,756	1,801	1,812	1,762
12 S. Korea	891	1,008	1,119	1,002	900	1,096	1,210	1,235	1,315	1,415

Note: GNI is the sum of value added by all resident producers plus any product taxes (less subsidies) not included in the valuation of output plus net receipts of primary income (compensation of employees and property income) from abroad (World Bank).

Source: World Bank

<http://data.worldbank.org/indicator/NY.GNP.MKTP.CD>



(National currencies per USD)

		2006	2007	2008	2009	2010	2011	2012	2013	2014	2015
Yuan (China)	End of period	7.81	7.30	6.83	6.83	6.62	6.30	6.29	6.10	6.12	6.49
	Annual average	7.97	7.61	6.95	6.83	6.77	6.46	6.31	6.20	6.14	6.23
JPY	End of period	118.95	114.00	90.75	92.06	81.45	77.72	86.55	105.30	120.64	120.50
	Annual average	116.30	117.75	103.36	93.57	87.78	79.81	79.79	97.60	105.94	121.04
Euro	End of period	0.76	0.68	0.72	0.69	0.75	0.77	0.76	0.73	0.82	0.92
	Annual average	0.80	0.73	0.68	0.72	0.76	0.72	0.78	0.75	0.75	0.90
Won (S. Korea)	End of period	929.80	936.10	1259.50	1164.50	1134.80	1151.80	1070.60	1055.40	1099.30	1172.00
	Annual average	954.79	929.26	1,102.05	1,276.93	1,156.06	1,108.29	1,126.47	1,094.85	1,052.96	1,131.16

Source: IMF

<http://data.imf.org/?sk=af1819f1-9b6c-43ec-bee4-b1b55fa54cf7>

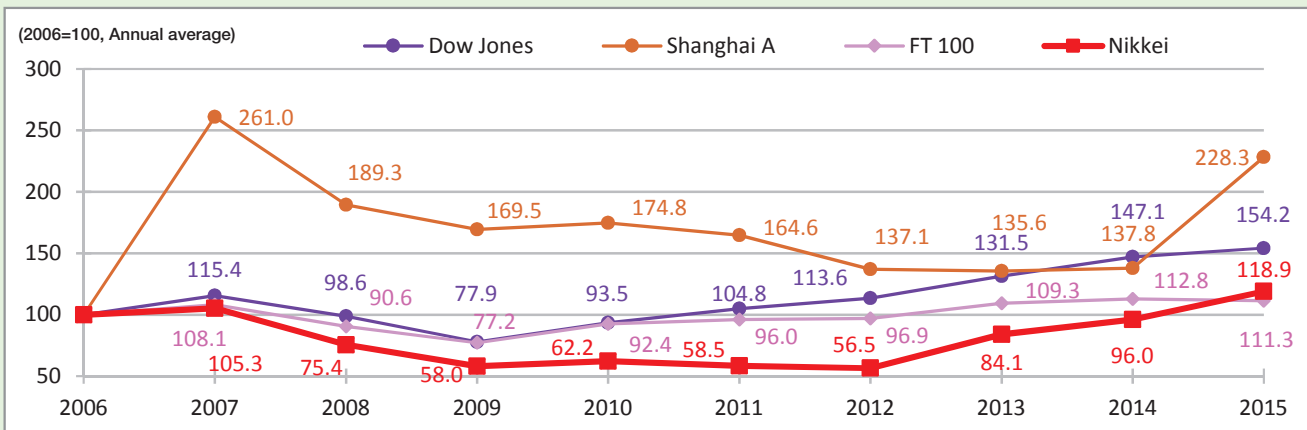
(JPY per national currencies)

		2006	2007	2008	2009	2010	2011	2012	2013	2014	2015
JPY /Yuan (China)	Annual average	14.59	15.48	14.87	13.70	12.97	12.35	12.64	15.75	17.25	17.20
JPY /Euro	Annual average	146.01	161.24	152.41	130.19	116.44	111.07	102.65	129.64	140.40	140.07
JPY /Won (S. Korea)	Annual average	0.106	0.127	0.094	0.073	0.076	0.072	0.071	0.089	0.101	0.095

Source: Cabinet Office

1-8 Stock Prices and Indices

株価・株価指数



Source: Compiled by Keizai Koho Center from Cabinet Office data.

Stock Prices and Indices

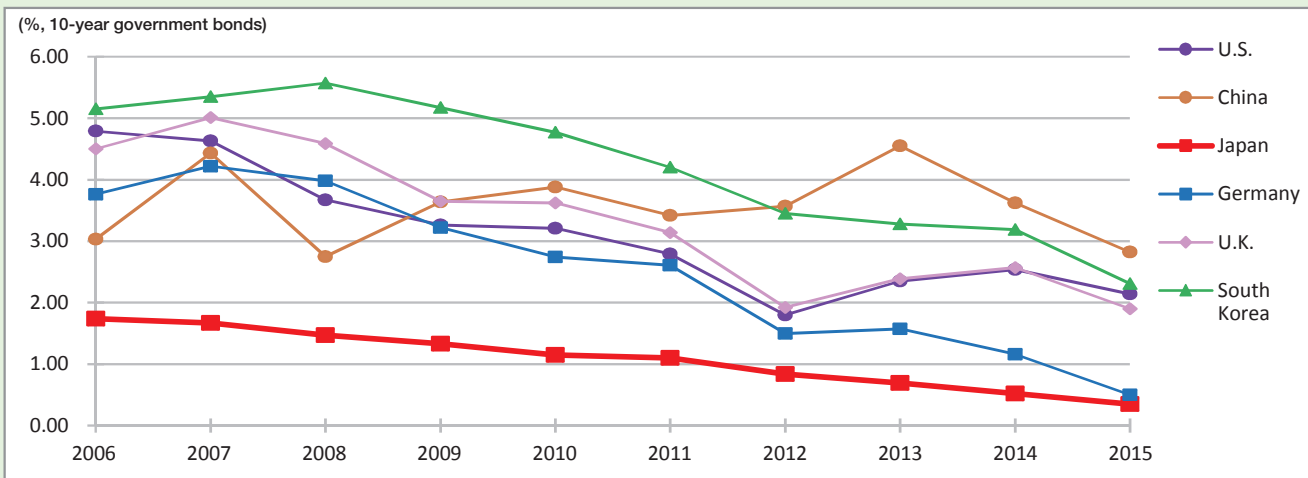
(Annual average)

	2006	2007	2008	2009	2010	2011	2012	2013	2014	2015
Dow Jones (USD)	11,409.33	13,169.85	11,249.33	8,885.67	10,664.97	11,960.80	12,960.35	15,001.04	16,782.40	17,588.04
Shanghai A (Index)	1,696.49	4,427.34	3,211.76	2,875.93	2,964.66	2,793.06	2,325.53	2,299.80	2,338.44	3,873.62
Nikkei (JPY)	16,124.03	16,984.38	12,151.55	9,347.61	10,022.45	9,427.03	9,109.61	13,555.09	15,482.01	19,172.06
FT 100 (Index)	5,921.81	6,404.00	5,366.32	4,569.09	5,472.16	5,685.38	5,740.16	6,472.02	6,681.60	6,591.37

Source: Cabinet Office

1-9 Long-term Interest Rates

長期金利



Source: OECD

<http://stats.oecd.org/#>

Ministry of Finance of the People's Republic of China

<http://yield.chinabond.com.cn/cbweb-czb-web/czb/moreInfo>

Long-term Interest Rates

(%, 10-year government bonds)

	2006	2007	2008	2009	2010	2011	2012	2013	2014	2015
U.S.	4.79	4.63	3.67	3.26	3.21	2.79	1.80	2.35	2.54	2.14
China	3.03	4.43	2.75	3.64	3.88	3.42	3.57	4.55	3.62	2.82
Japan	1.74	1.67	1.47	1.33	1.15	1.10	0.84	0.69	0.52	0.35
Germany	3.76	4.22	3.98	3.22	2.74	2.61	1.50	1.57	1.16	0.50
U.K.	4.50	5.01	4.59	3.65	3.62	3.14	1.92	2.39	2.57	1.90
South Korea	5.15	5.35	5.57	5.17	4.77	4.20	3.45	3.28	3.19	2.31

Note: China's figures are end of period. Others are the annual average.

Source: OECD

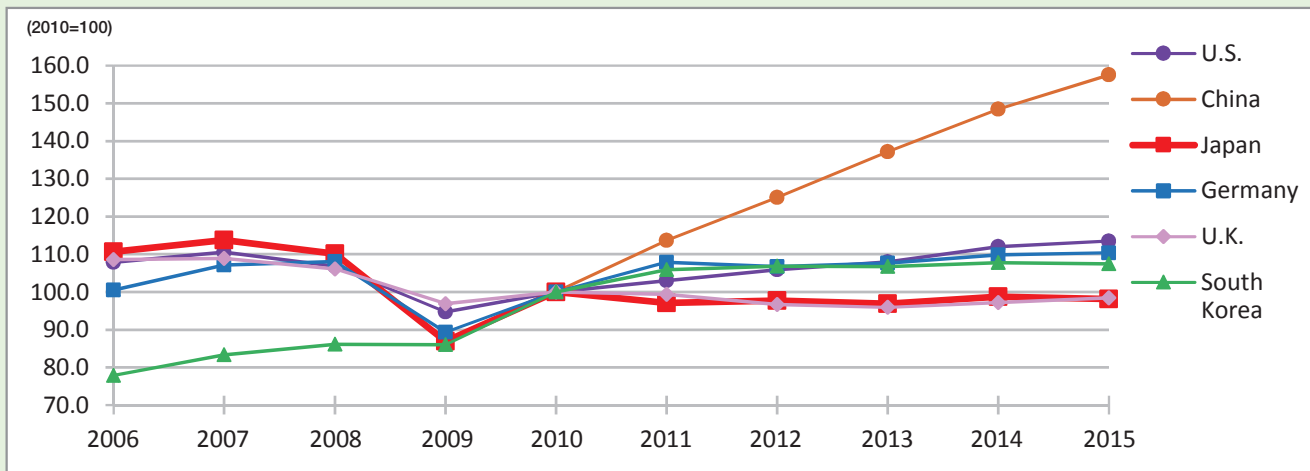
<http://stats.oecd.org/#>

Ministry of Finance of the People's Republic of China

<http://yield.chinabond.com.cn/cbweb-czb-web/czb/moreInfo>

1-10 Industrial Production Index

鉱工業生産指数



Source: IMF

<http://data.imf.org/?sk=5DABAFF2-C5AD-4D27-A175-1253419C02D1>

Industrial Production Index

(2010=100)

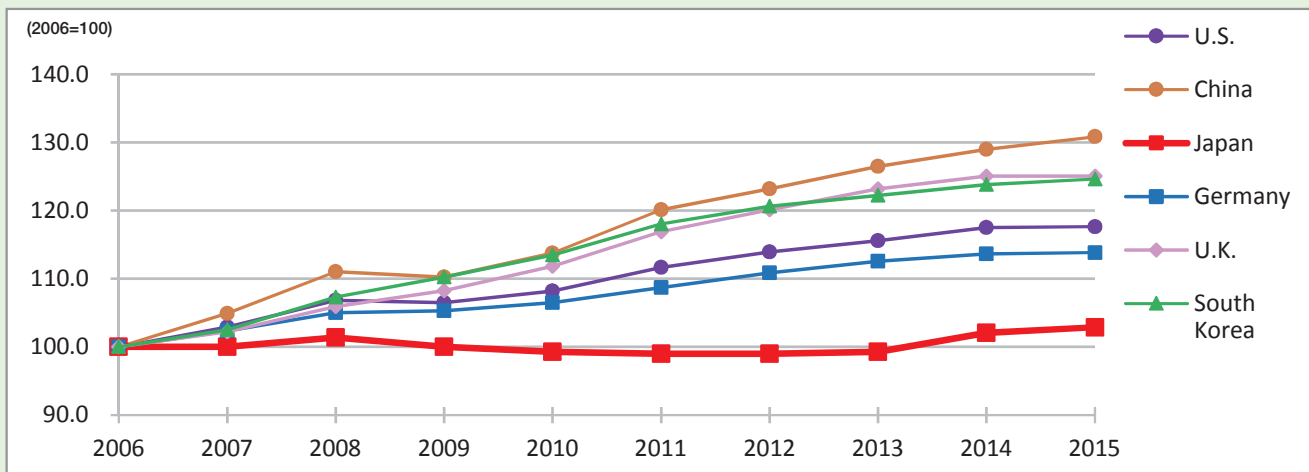
	2006	2007	2008	2009	2010	2011	2012	2013	2014	2015
U.S.	107.9	110.6	106.8	94.7	100.0	103.0	105.9	108.0	112.0	113.5
China	N/A				100.0	113.7	125.0	137.2	148.5	157.5
Japan	110.7	113.8	110.1	87.0	100.0	97.1	97.7	96.9	98.7	98.1
Germany	100.5	107.1	108.1	89.3	100.0	107.9	106.7	107.7	109.8	110.4
U.K.	108.6	108.9	106.1	96.9	100.0	99.4	96.7	95.9	97.2	98.4
South Korea	77.9	83.3	86.1	86.0	100.0	105.9	106.8	106.8	107.8	107.5

Source: IMF

<http://data.imf.org/?sk=5DABAFF2-C5AD-4D27-A175-1253419C02D1>

1-11 Consumer Price Indices (All Items)

消費者物価指数(総合)



Source: Compiled by Keizai Koho Center from OECD data
http://stats.oecd.org/Index.aspx?DataSetCode=MEI_PRICES#

Consumer Price Indices (All Items)

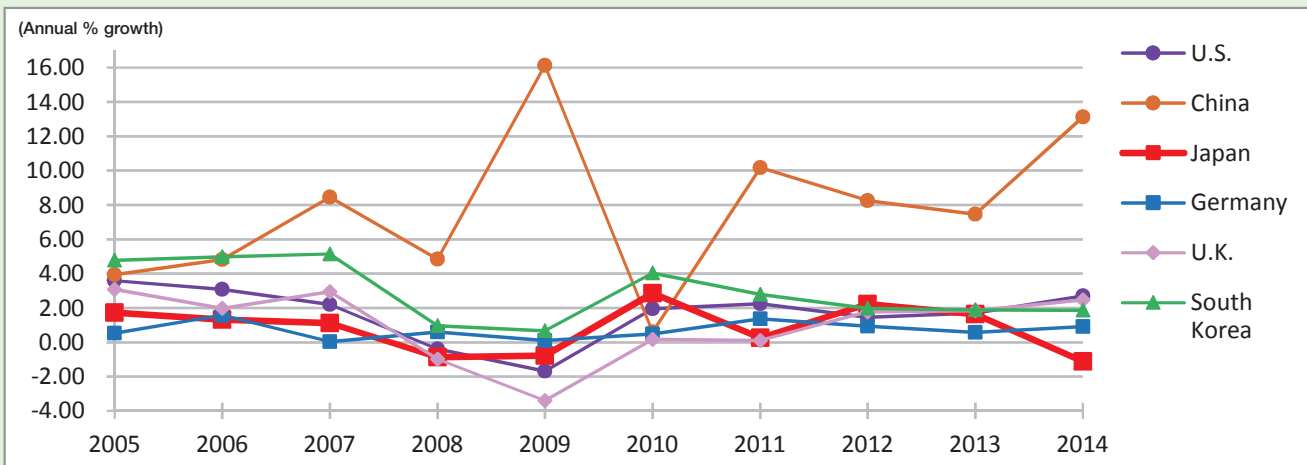
(2006=100)

	2006	2007	2008	2009	2010	2011	2012	2013	2014	2015
U.S.	100.0	102.9	106.8	106.5	108.2	111.7	114.0	115.6	117.5	117.6
China	100.0	104.9	111.0	110.2	113.8	120.1	123.2	126.5	129.0	130.8
Japan	100.0	100.0	101.4	100.0	99.3	99.0	99.0	99.3	102.1	102.9
Germany	100.0	102.3	105.0	105.3	106.5	108.7	110.9	112.6	113.6	113.8
U.K.	100.0	102.2	105.9	108.3	111.9	116.9	120.1	123.2	125.1	125.1
South Korea	100.0	102.5	107.3	110.2	113.5	118.0	120.7	122.2	123.8	124.6

Source: Compiled by Keizai Koho Center from OECD data
http://stats.oecd.org/Index.aspx?DataSetCode=MEI_PRICES#

1-12 Household Final Consumption Expenditure

家計最終消費支出



Source: World Bank

<http://data.worldbank.org/indicator/NE.CON.PETC.CD?display=default>

Household Final Consumption Expenditure

(Annual % growth)

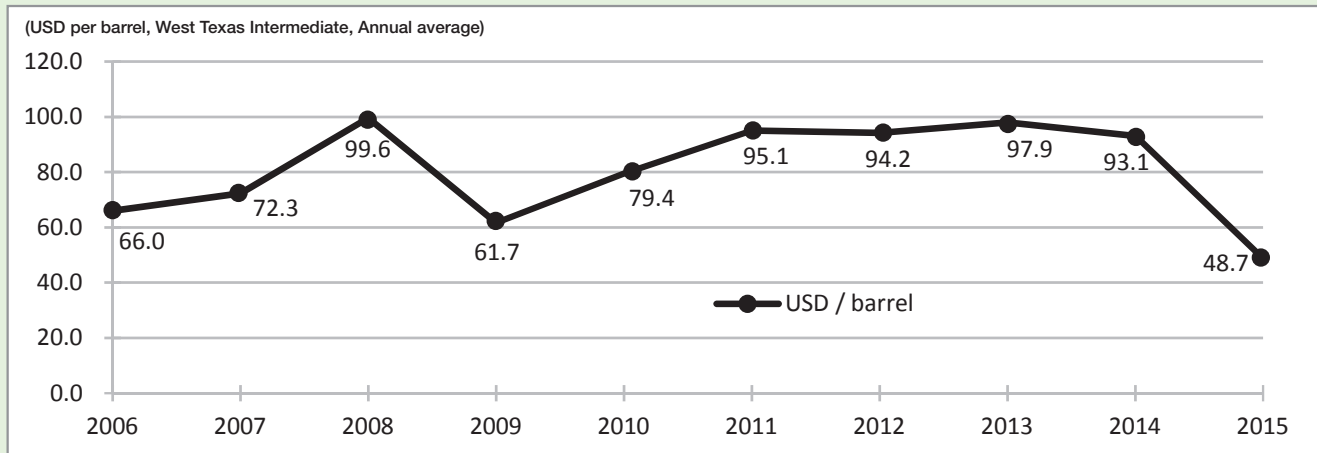
	2005	2006	2007	2008	2009	2010	2011	2012	2013	2014
U.S.	3.59	3.07	2.20	-0.38	-1.68	1.96	2.25	1.45	1.70	2.69
China	3.95	4.83	8.46	4.84	16.13	0.60	10.17	8.24	7.45	13.13
Japan	1.73	1.31	1.12	-0.86	-0.78	2.86	0.26	2.23	1.64	-1.11
Germany	0.53	1.57	0.04	0.59	0.10	0.50	1.36	0.94	0.59	0.91
U.K.	3.08	1.98	2.95	-0.98	-3.40	0.16	0.10	1.77	1.85	2.47
South Korea	4.78	4.97	5.14	0.97	0.66	4.04	2.78	1.97	1.88	1.87

Source: World Bank

<http://data.worldbank.org/indicator/NE.CON.PETC.CD?display=default>

1-13 Crude Oil Price

原油価格



Source: World Bank

<http://www.worldbank.org/en/research/commodity-markets>

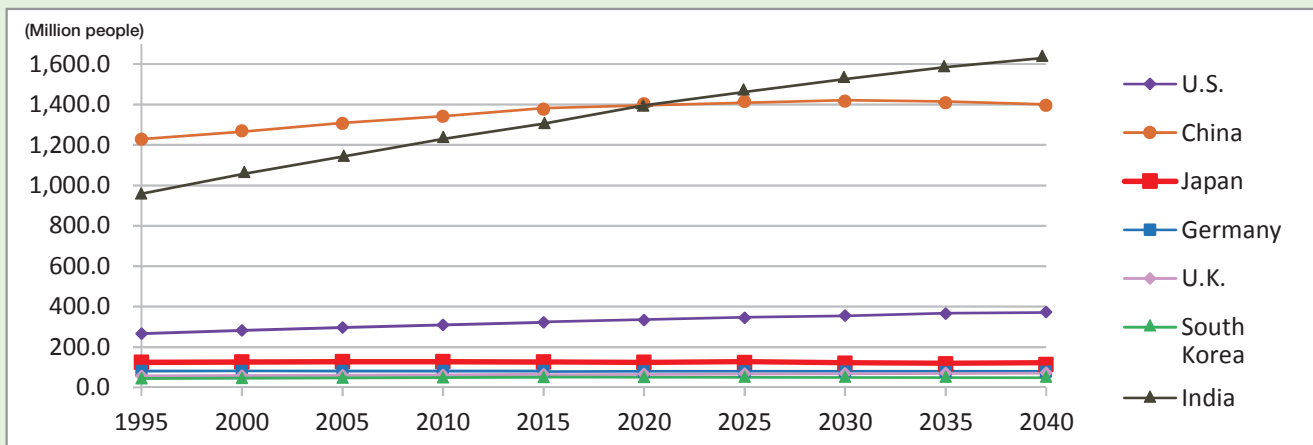


Rank		Gold	Silver	Bronze	Total
1	U.S.	46	37	38	121
2	U.K.	27	23	17	67
3	China	26	18	26	70
4	Russia	19	18	19	56
5	Germany	17	10	15	42
6	Japan	12	8	21	41
7	France	10	18	14	42
8	South Korea	9	3	9	21
9	Italy	8	12	8	28
10	Australia	8	11	10	29

Source: Rio 2016 Olympics (official site)
<https://www.rio2016.com/en/medal-count-country>

2-1 Population

人口



Note: Estimates from 2015 using medium fertility variant.

Source: UN

<http://esa.un.org/unpd/wpp/Download/Standard/Population/>

Population

(Million people)

	1995	2000	2005	2010	2015	2020	2025	2030	2035	2040
U.S.	266.3	282.9	296.1	309.9	321.8	333.5	345.1	355.8	365.3	373.8
China	1,227.8	1,270.0	1,305.6	1,341.0	1,376.0	1,402.8	1,414.9	1,415.5	1,408.3	1,394.7
Japan	124.5	125.7	127.0	127.3	126.6	125.0	122.8	120.1	117.1	113.8
Germany	81.6	81.9	81.2	80.4	80.7	80.4	80.0	79.3	78.4	77.3
U.K.	57.9	58.9	60.2	62.7	64.7	66.7	68.5	70.1	71.5	72.8
India	960.9	1,053.5	1,144.3	1,231.0	1,311.1	1,388.9	1,461.6	1,527.7	1,585.3	1,633.7
South Korea	44.7	46.2	47.6	49.1	50.3	51.3	52.0	52.5	52.7	52.4

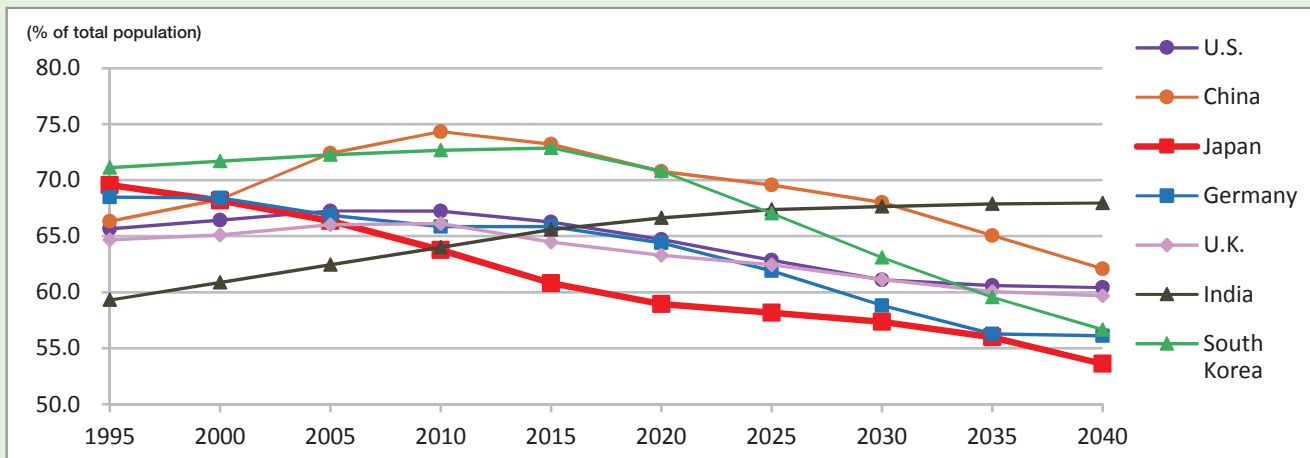
Note: Estimates from 2015 using medium fertility variant.

Source: UN

<http://esa.un.org/unpd/wpp/Download/Standard/Population/>

2-2 Population (Ages 15-64)

人口 (15 ~ 64歳)



Note: Estimates from 2015 using medium fertility variant.

Source: UN

<http://esa.un.org/unpd/wpp/Download/Standard/Population/>

Population (Ages 15-64)

(Million people, % of total population)

	1995	2000	2005	2010	2015	2020	2025	2030	2035	2040
U.S.	174.8	187.9	199.2	208.3	213.2	215.8	216.9	217.4	221.4	225.8
	65.7%	66.4%	67.3%	67.2%	66.3%	64.7%	62.9%	61.1%	60.6%	60.4%
China	814.6	867.2	945.5	996.9	1,007.5	993.1	984.2	962.6	916.3	866.0
	66.3%	68.3%	72.4%	74.3%	73.2%	70.8%	69.6%	68.0%	65.1%	62.1%
Japan	86.6	85.7	84.3	81.2	77.0	73.7	71.5	68.9	65.5	61.0
	69.6%	68.2%	66.3%	63.8%	60.8%	58.9%	58.2%	57.3%	56.0%	53.6%
Germany	55.9	56.0	54.3	53.0	53.2	51.8	49.5	46.6	44.1	43.4
	68.5%	68.4%	66.9%	65.9%	65.9%	64.4%	61.9%	58.8%	56.3%	56.1%
U.K.	37.4	38.3	39.7	41.5	41.7	42.2	42.8	42.9	43.0	43.5
	64.7%	65.1%	66.0%	66.1%	64.5%	63.3%	62.5%	61.1%	60.1%	59.7%
India	569.8	641.2	714.5	787.7	860.0	925.5	984.7	1,033.3	1,076.2	1,110.4
	59.3%	60.9%	62.4%	64.0%	65.6%	66.6%	67.4%	67.6%	67.9%	68.0%
South Korea	31.8	33.1	34.4	35.7	36.7	36.3	34.8	33.1	31.4	29.7
	71.1%	71.7%	72.3%	72.7%	72.9%	70.8%	67.0%	63.1%	59.6%	56.6%

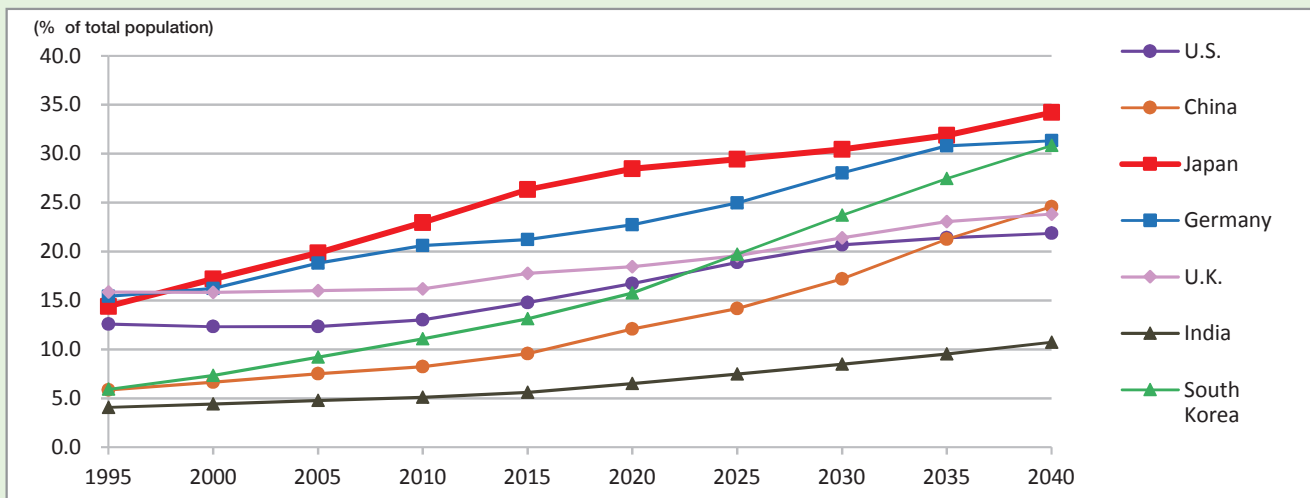
Note: Estimates from 2015 using medium fertility variant.

Source: UN

<http://esa.un.org/unpd/wpp/Download/Standard/Population/>

2-3 Population (Ages 65 and Older)

人口 (65歳以上)



Note: Note: Estimates from 2015 using medium fertility variant.

Source: UN

<http://esa.un.org/unpd/wpp/Download/Standard/Population/>

Population (Ages 65 and Older)

(Million people, % of total population)

	1995	2000	2005	2010	2015	2020	2025	2030	2035	2040
U.S.	33.5	34.8	36.5	40.3	47.6	55.7	65.1	73.6	78.2	81.7
	12.6%	12.3%	12.3%	13.0%	14.8%	16.7%	18.9%	20.7%	21.4%	21.9%
China	71.8	84.5	97.8	110.6	131.4	169.6	200.6	243.2	299.3	342.9
	5.9%	6.7%	7.5%	8.2%	9.6%	12.1%	14.2%	17.2%	21.3%	24.6%
Japan	17.9	21.6	25.2	29.2	33.3	35.6	36.1	36.6	37.3	38.9
	14.4%	17.2%	19.8%	22.9%	26.3%	28.5%	29.4%	30.4%	31.9%	34.2%
Germany	12.6	13.3	15.3	16.6	17.1	18.3	20.0	22.2	24.1	24.2
	15.4%	16.2%	18.8%	20.6%	21.2%	22.7%	25.0%	28.0%	30.8%	31.3%
U.K.	9.2	9.3	9.6	10.1	11.5	12.3	13.4	15.0	16.5	17.4
	15.9%	15.8%	16.0%	16.2%	17.8%	18.4%	19.6%	21.4%	23.1%	23.8%
India	39.1	46.4	54.7	62.9	73.6	90.5	109.1	129.3	150.9	175.2
	4.1%	4.4%	4.8%	5.1%	5.6%	6.5%	7.5%	8.5%	9.5%	10.7%
South Korea	2.6	3.4	4.4	5.4	6.6	8.1	10.2	12.5	14.5	16.2
	5.9%	7.3%	9.2%	11.1%	13.1%	15.8%	19.7%	23.7%	27.4%	30.8%

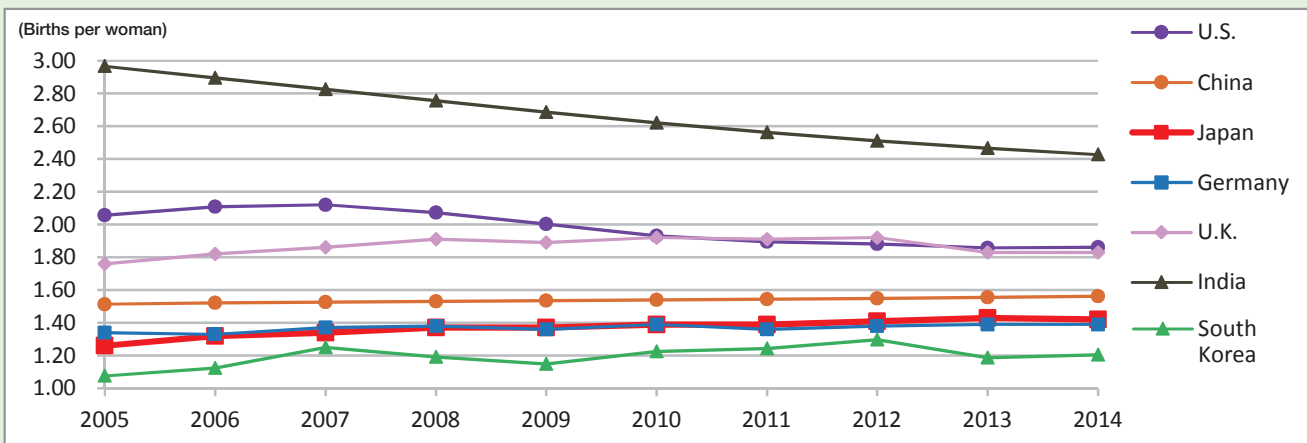
Note: Estimates from 2015 using medium fertility variant.

Source: UN

<http://esa.un.org/unpd/wpp/Download/Standard/Population/>

2-4 Total Fertility Rate

合計特殊出生率



Note: Total fertility rate represents the number of children that would be born to a woman if she were to live to the end of her childbearing years and bear children in accordance with age-specific fertility rates of the specified year (World Bank).

Source: World Bank

<http://data.worldbank.org/indicator/SP.DYN.TFRT.IN>

Total Fertility Rate

(Births per woman)

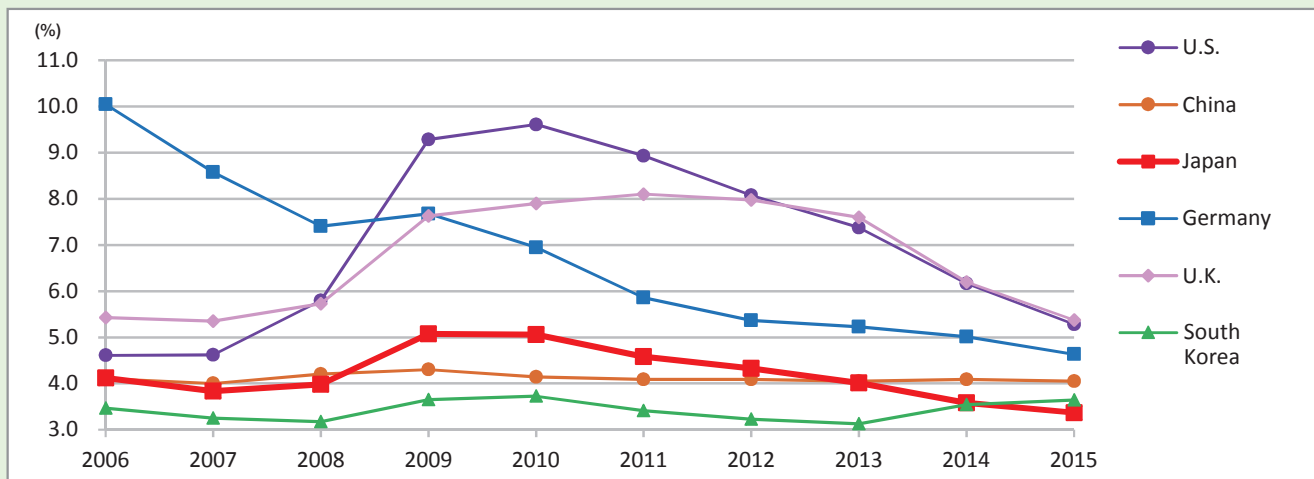
	2005	2006	2007	2008	2009	2010	2011	2012	2013	2014
U.S.	2.06	2.11	2.12	2.07	2.00	1.93	1.89	1.88	1.86	1.86
China	1.51	1.52	1.53	1.53	1.54	1.54	1.54	1.55	1.56	1.56
Japan	1.26	1.32	1.34	1.37	1.37	1.39	1.39	1.41	1.43	1.42
Germany	1.34	1.33	1.37	1.38	1.36	1.39	1.36	1.38	1.39	1.39
U.K.	1.76	1.82	1.86	1.91	1.89	1.92	1.91	1.92	1.83	1.83
India	2.97	2.90	2.83	2.76	2.69	2.62	2.56	2.51	2.47	2.43
South Korea	1.08	1.12	1.25	1.19	1.15	1.23	1.24	1.30	1.19	1.21

Source: World Bank

<http://data.worldbank.org/indicator/SP.DYN.TFRT.IN>

2-5 Unemployment Rate

失業率



Source: IMF

<http://www.imf.org/external/pubs/ft/weo/2016/01/weodata/index.aspx>

Unemployment Rate

(%)

	2006	2007	2008	2009	2010	2011	2012	2013	2014	2015
U.S.	4.6	4.6	5.8	9.3	9.6	8.9	8.1	7.4	6.2	5.3
China	4.1	4.0	4.2	4.3	4.1	4.1	4.1	4.1	4.1	4.1
Japan	4.1	3.8	4.0	5.1	5.1	4.6	4.3	4.0	3.6	3.4
Germany	10.0	8.6	7.4	7.7	6.9	5.9	5.4	5.2	5.0	4.6
U.K.	5.4	5.4	5.7	7.6	7.9	8.1	8.0	7.6	6.2	* 5.4
South Korea	3.5	3.3	3.2	3.7	3.7	3.4	3.2	3.1	3.5	* 3.6

Note: * estimate.

Source: IMF

<http://www.imf.org/external/pubs/ft/weo/2016/01/weodata/index.aspx>

2-6 Employment Rate by Age and Gender

年齢・性別雇用率

(%)

Age	Country	Gender	2006	2007	2008	2009	2010	2011	2012	2013	2014	2015
15-24	U.S.	Female	52.2	51.8	50.2	47.0	45.1	44.9	45.4	46.0	47.1	48.2
		Male	56.2	54.4	52.3	46.7	44.9	46.0	46.6	46.9	48.2	49.0
	Japan	Female	42.0	41.4	41.5	40.6	39.8	40.0	39.0	40.7	41.1	41.0
		Male	40.6	41.2	40.6	38.0	37.2	37.9	38.0	38.8	39.6	40.4
	Germany	Female	41.7	43.6	44.6	44.4	44.5	46.1	44.5	45.2	44.3	44.0
		Male	45.3	47.2	48.7	47.5	47.9	49.7	48.6	48.4	47.7	46.5
25-54	U.S.	Female	72.5	72.5	72.3	70.2	69.3	69.0	69.2	69.3	70.0	70.3
		Male	87.3	87.5	86.0	81.5	81.0	81.4	82.5	82.8	83.6	84.4
	Japan	Female	66.8	67.6	67.9	68.1	68.7	69.4	69.1	70.8	71.9	72.7
		Male	92.7	93.3	93.2	92.1	92.4	92.4	91.6	91.7	92.2	92.2
	Germany	Female	72.7	74.0	74.7	75.4	76.4	77.9	78.3	78.6	78.9	79.2
		Male	84.8	86.4	87.0	86.1	86.8	88.0	88.4	88.2	88.1	88.2
55-64	U.S.	Female	56.5	56.6	57.0	56.4	56.4	55.9	56.1	56.2	56.3	56.4
		Male	67.5	67.4	67.7	65.2	64.4	64.4	65.5	66.0	66.8	67.1
	Japan	Female	50.1	51.4	52.0	51.9	52.4	52.9	52.4	54.3	56.1	57.9
		Male	80.2	81.8	82.0	80.6	79.9	79.9	78.8	79.9	81.6	82.5
	Germany	Female	40.3	43.4	46.0	48.6	50.7	53.2	55.0	57.7	60.0	61.2
		Male	56.1	59.4	61.7	63.8	65.2	67.1	68.6	69.9	71.4	71.3

Source: OECD

<http://stats.oecd.org/Index.aspx?DataSetCode=STLABOUR#>

(%)

Age	Country	Gender	2006	2007	2008	2009	2010	2011	2012	2013	2014	2015
15-24	U.S.	Female	39.7	40.3	40.5	44.0	43.2	42.8	43.7	41.9	42.3	41.5
		Male	28.4	28.0	30.0	32.6	33.0	33.2	31.9	31.7	30.7	31.7
	Japan	Female	26.9	27.4	27.2	29.4	30.5	32.3	31.4	33.6	35.2	35.2
		Male	22.6	23.7	24.5	25.4	27.5	26.6	28.5	29.2	29.9	29.9
	Germany	Female	22.0	22.9	23.0	22.8	21.9	24.1	24.5	25.5	25.2	26.4
		Male	13.0	14.2	14.9	14.5	13.7	15.0	15.5	17.1	16.7	17.4
25-54	U.S.	Female	12.2	12.1	12.2	13.6	13.1	12.8	12.7	12.3	12.4	11.9
		Male	2.5	2.7	2.9	4.1	3.9	4.0	3.8	4.0	3.8	3.6
	Japan	Female	28.6	29.8	30.4	30.5	30.2	30.6	30.6	32.1	33.1	32.5
		Male	3.4	3.8	4.5	5.0	4.5	4.5	4.4	4.9	5.4	5.3
	Germany	Female	40.1	40.1	39.3	39.1	39.1	38.6	38.2	37.9	37.0	36.7
		Male	5.6	5.5	5.4	5.6	5.6	5.7	5.6	5.8	5.9	5.9
55-64	U.S.	Female	15.0	15.4	15.5	15.3	15.1	15.8	15.5	14.5	15.0	14.6
		Male	6.2	6.1	5.9	6.7	6.4	5.8	6.0	5.8	5.4	5.3
	Japan	Female	37.0	38.3	38.9	40.0	40.5	41.8	41.5	43.2	43.7	42.5
		Male	9.3	9.8	10.2	11.0	11.3	11.1	10.9	12.1	12.5	11.6
	Germany	Female	45.1	44.4	43.7	42.7	42.0	42.6	41.9	42.2	41.4	41.1
		Male	8.8	8.6	8.2	8.3	8.1	8.9	9.2	9.2	9.3	9.2

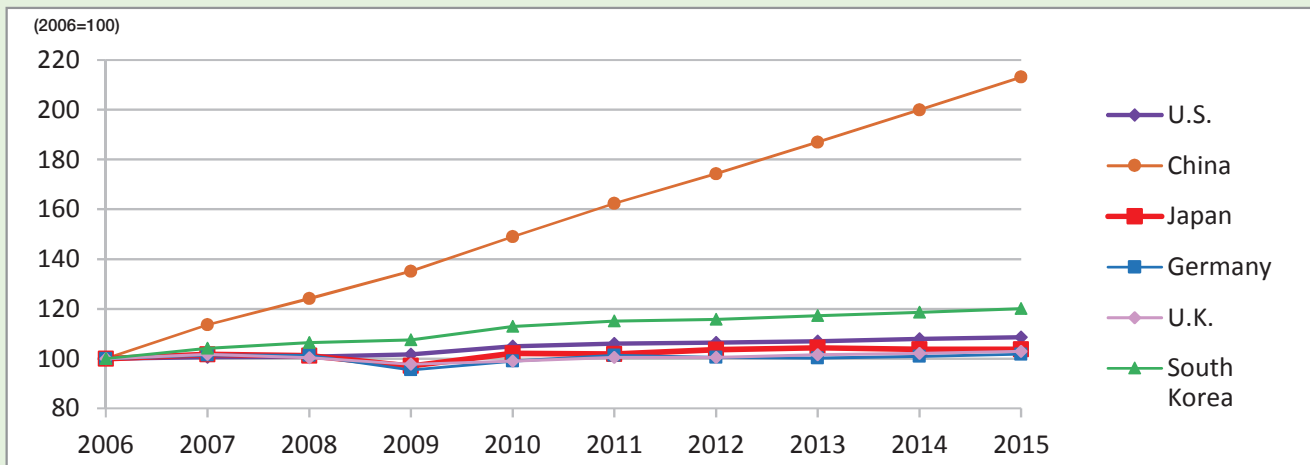
Note: Germany and Japan data utilize total employment statistics. U.S. data utilizes dependent employment statistics. Dependent employment refers to wage and salary workers.

Source: OECD

<https://data.oecd.org/emp/temporary-employment.htm>

2-8 Labor Productivity and Index

労働生産性・指数



Note: Labor productivity per person employed in 2015 USD (converted to 2015 price level with 2011 PPPs).

Labor productivity is defined as real output in national currency per hour worked.

Source: Compiled by Keizai Koho Center from Conference Board data.

<https://www.conference-board.org/data/economydatabase/index.cfm?id=27762>

Labor Productivity and Index

(USD)

	2006	2007	2008	2009	2010	2011	2012	2013	2014	2015
U.S.	109,371	110,102	110,266	111,322	114,784	116,003	116,446	117,018	117,987	118,826
(2006=100)	100.0	100.7	100.8	101.8	104.9	106.1	106.5	107.0	107.9	108.6
China	11,823	13,441	14,683	15,979	17,609	19,195	20,596	22,103	23,632	25,198
(2006=100)	100.0	113.7	124.2	135.1	148.9	162.3	174.2	187.0	199.9	213.1
Japan	71,163	72,414	72,003	69,081	72,646	72,458	73,709	74,276	73,796	73,849
(2006=100)	100.0	101.8	101.2	97.1	102.1	101.8	103.6	104.4	103.7	103.8
Germany	87,523	88,831	88,625	83,572	86,710	88,679	88,016	87,719	88,340	89,095
(2006=100)	100.0	101.5	101.3	95.5	99.1	101.3	100.6	100.2	100.9	101.8
U.K.	83,503	84,969	83,861	81,651	82,702	83,910	83,983	84,809	85,292	85,963
(2006=100)	100.0	101.8	100.4	97.8	99.0	100.5	100.6	101.6	102.1	102.9
South Korea	59,353	61,843	63,202	63,844	67,069	68,347	68,678	69,579	70,386	71,287
(2006=100)	100.0	104.2	106.5	107.6	113.0	115.2	115.7	117.2	118.6	120.1

Note: Labor productivity per person employed in 2015 USD (converted to 2015 price level with 2011 PPPs).

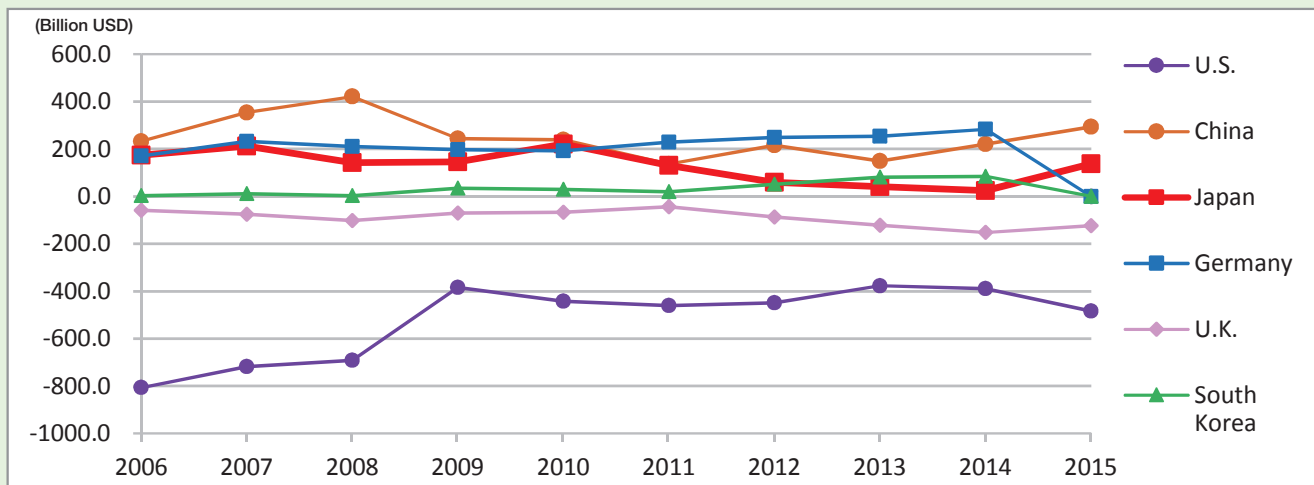
Labor productivity is defined as real output in national currency per hour worked.

Source: Compiled by Keizai Koho Center from Conference Board data.

<https://www.conference-board.org/data/economydatabase/index.cfm?id=27762>

3-1 Current Account Balance

經常収支



Source: IMF

<http://www.imf.org/external/pubs/ft/weo/2016/01/weodata/index.aspx>

Current Account Balance

(Billion USD)

	2006	2007	2008	2009	2010	2011	2012	2013	2014	2015
U.S.	-806.7	-718.6	-690.8	-384.0	-442.0	-460.4	-449.7	-376.8	-389.5	-484.1
China	231.8	353.2	420.6	243.3	237.8	136.1	215.4	148.2	219.7	293.2
Japan	174.5	212.1	142.6	145.3	221.0	129.8	59.7	40.7	24.4	137.5
Germany	170.7	232.5	210.9	196.7	192.3	229.0	248.9	252.9	282.9	* 285.2
U.K.	-59.4	-74.6	-101.2	-70.4	-67.2	-43.9	-86.7	-121.8	-152.2	-123.5
South Korea	3.6	11.8	3.2	33.6	28.9	18.7	50.8	81.1	84.4	* 105.9

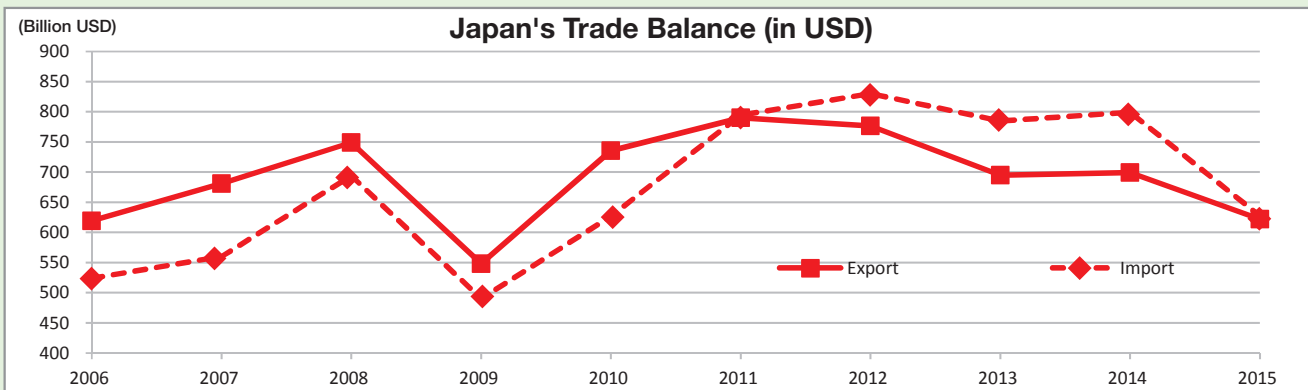
Note: * estimate.

Source: IMF

<http://www.imf.org/external/pubs/ft/weo/2016/01/weodata/index.aspx>

3-2 Trade Balance (Japan)

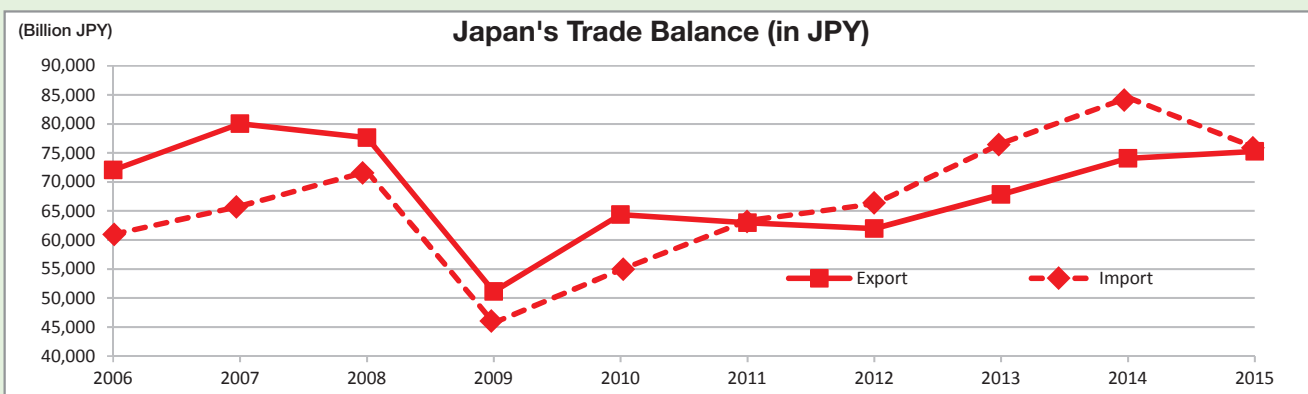
貿易収支(日本)



(Billion USD)

	2006	2007	2008	2009	2010	2011	2012	2013	2014	2015
Export	619	681	749	548	735	790	777	695	699	622
Import	524	560	694	490	627	794	830	785	799	627
Balance	95	121	55	58	109	-4	-53	-90	-100	-5

Source: IMF

<http://data.imf.org/?sk=7A51304B-6426-40C0-83DD-CA473CA1FD52>


(Billion JPY)

	2006	2007	2008	2009	2010	2011	2012	2013	2014	2015
Export	72,027	80,024	77,611	51,122	64,391	62,965	61,957	67,829	74,075	75,265
Import	60,957	65,836	71,808	45,734	54,875	63,296	66,229	76,602	84,540	75,894
Balance	11,070	14,187	5,803	5,388	9,516	-330	-4,272	-8,773	-10,465	-629

Source: Ministry of Finance

http://www.mof.go.jp/international_policy/reference/balance_of_payments/bpnet.htm

3-3 Japan's Major Trading Partners

日本の主な貿易相手

(Billion JPY)

Exports

	2006	2007	2008	2009	2010	2011	2012	2013	2014	2015
World	75,246.2	83,931.4	81,018.1	54,170.6	67,399.6	65,546.5	63,747.6	69,774.2	73,093.0	75,613.9
1 U.S.	16,933.6	16,896.2	14,214.3	10,235.6	13,085.6	12,902.2	11,509.1	12,928.2	13,649.3	15,224.6
2 China	10,793.7	12,839.0	12,949.9	8,733.4	10,374.0	10,017.7	11,188.4	12,625.2	13,381.5	13,223.4
3 South Korea	5,848.9	6,384.0	6,168.3	4,409.7	5,460.2	5,269.1	4,911.3	5,511.8	5,455.9	5,326.6
4 Taiwan	5,131.3	5,274.3	4,781.6	3,398.7	4,594.2	4,057.7	3,673.2	4,060.8	4,231.6	4,472.5
5 Hong Kong	4,239.0	4,571.7	4,177.8	2,975.1	3,704.8	3,419.8	3,488.9	3,651.3	4,039.3	4,236.0
6 Thailand	2,664.7	3,009.3	3,051.5	2,069.7	2,993.7	2,988.5	3,276.2	3,507.2	3,319.8	3,386.3
7 Germany	2,375.6	2,659.7	2,757.6	1,933.2	2,209.1	2,170.1	1,859.4	2,047.3	2,225.2	2,402.6
8 Singapore	2,250.2	2,566.1	2,483.7	1,553.5	1,776.6	1,871.4	1,660.0	1,850.2	2,017.9	1,964.8
9 U.K.	1,769.8	2,180.9	2,185.1	1,260.3	1,544.6	1,496.1	1,618.7	1,661.8	1,560.5	1,554.9
10 Netherlands	1,713.8	1,917.0	1,793.3	1,200.1	1,430.5	1,428.9	1,470.8	1,655.6	1,501.2	1,516.4

Source: Ministry of Finance

http://www.customs.go.jp/toukei/suii/html/time_latest.htm

(Billion JPY)

Imports

	2006	2007	2008	2009	2010	2011	2012	2013	2014	2015
World	67,344.3	73,135.9	78,954.7	51,499.4	60,765.0	68,111.2	70,688.6	81,242.5	85,909.1	78,405.5
1 China	13,784.4	15,035.5	14,830.4	11,436.0	13,413.0	14,641.9	15,038.8	17,660.0	19,176.5	19,428.8
2 U.S.	7,911.2	8,348.7	8,039.6	5,512.3	5,911.4	5,931.4	6,082.1	6,814.8	7,542.7	8,059.8
3 Saudi Arabia	4,325.3	4,147.5	5,292.7	3,242.3	3,948.2	4,513.9	4,503.6	4,976.9	5,089.7	4,210.0
4 UAE	3,672.2	3,803.7	4,921.6	2,719.7	3,149.4	4,025.8	4,376.0	4,863.3	5,015.3	3,243.9
5 Australia	3,247.9	3,673.2	4,871.9	2,114.6	2,568.8	3,413.1	3,509.5	4,147.8	4,399.8	3,035.3
6 South Korea	3,178.3	3,209.6	3,378.0	2,051.0	2,504.0	3,170.1	3,233.7	3,604.4	3,537.5	2,846.2
7 Indonesia	2,806.9	3,116.6	3,052.0	2,037.6	2,476.2	2,716.0	2,863.1	3,493.1	3,531.3	2,817.4
8 Taiwan	2,365.2	2,334.5	2,752.2	1,710.7	2,024.6	2,425.7	2,621.3	2,901.2	3,086.7	2,601.6
9 Germany	2,146.3	2,283.6	2,397.6	1,563.4	1,987.4	2,395.4	2,576.4	2,813.0	2,715.6	2,471.8
10 Thailand	1,963.9	2,153.6	2,258.2	1,558.4	1,904.0	1,953.2	1,971.7	2,324.6	2,618.5	2,454.2

Source: Ministry of Finance

http://www.customs.go.jp/toukei/suii/html/time_latest.htm

3-4 Trade Balance (U.S.)

貿易収支(米国)

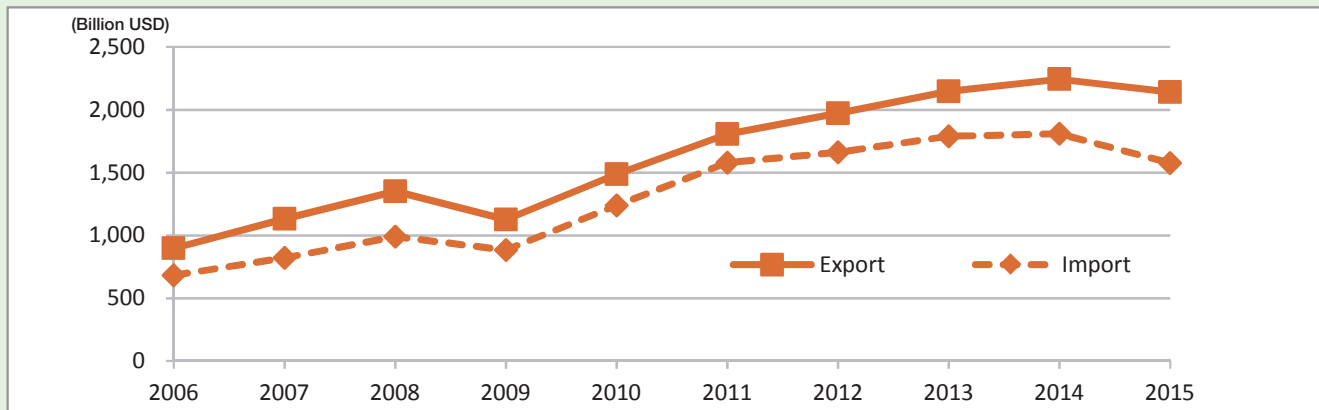


(Billion USD)

	2006	2007	2008	2009	2010	2011	2012	2013	2014	2015
Export	1,041	1,165	1,309	1,070	1,290	1,499	1,563	1,592	1,633	1,513
Import	1,878	1,986	2,141	1,580	1,939	2,240	2,304	2,295	2,374	2,273
Balance	-837	-821	-832	-510	-649	-741	-741	-703	-741	-759

Source: IMF

<http://data.imf.org/?sk=7A51304B-6426-40C0-83DD-CA473CA1FD52>



(Billion USD)

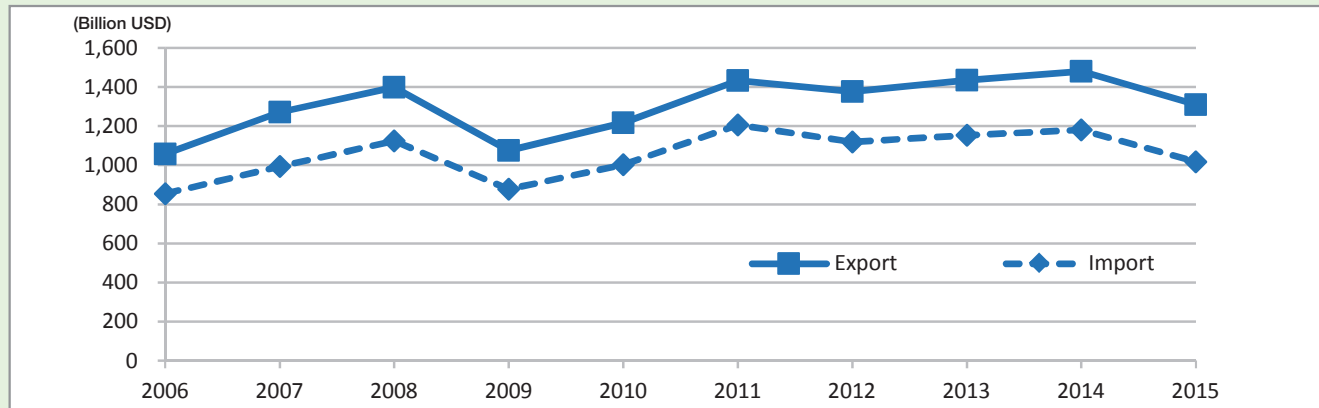
	2006	2007	2008	2009	2010	2011	2012	2013	2014	2015
Export	898	1,132	1,350	1,127	1,486	1,808	1,974	2,149	2,244	2,143
Import	682	820	990	884	1,240	1,579	1,662	1,790	1,809	1,576
Balance	216	312	360	244	246	229	312	359	435	567

Source: IMF

<http://data.imf.org/?sk=7A51304B-6426-40C0-83DD-CA473CA1FD52>

3-6 Trade Balance (Germany)

貿易収支(ドイツ)

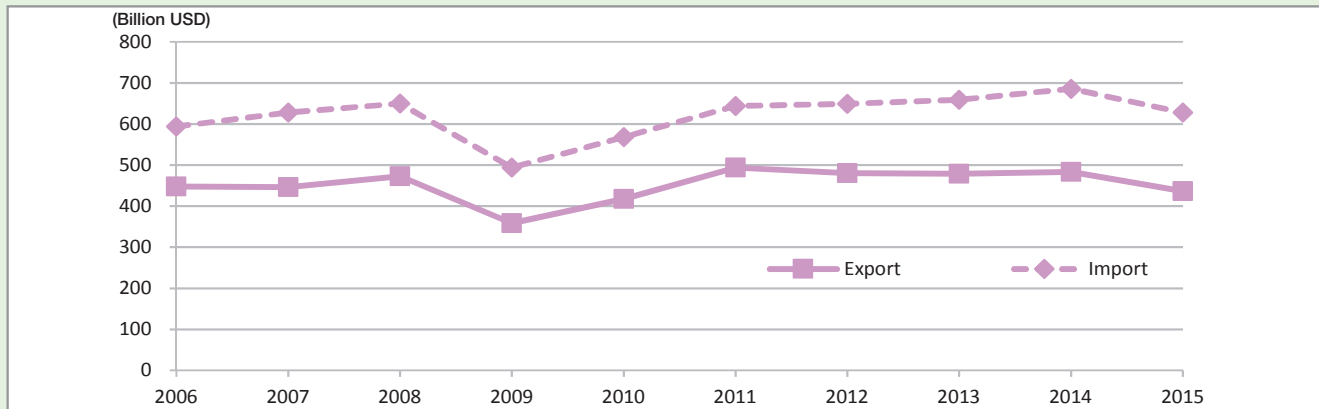


(Billion USD)

	2006	2007	2008	2009	2010	2011	2012	2013	2014	2015
Export	1,057	1,271	1,398	1,074	1,217	1,433	1,377	1,434	1,480	1,309
Import	854	994	1,125	876	1,003	1,206	1,120	1,153	1,180	1,017
Balance	203	277	274	198	214	227	257	281	300	292

Source: IMF

<http://data.imf.org/?sk=7A51304B-6426-40C0-83DD-CA473CA1FD52>

(Billion USD)

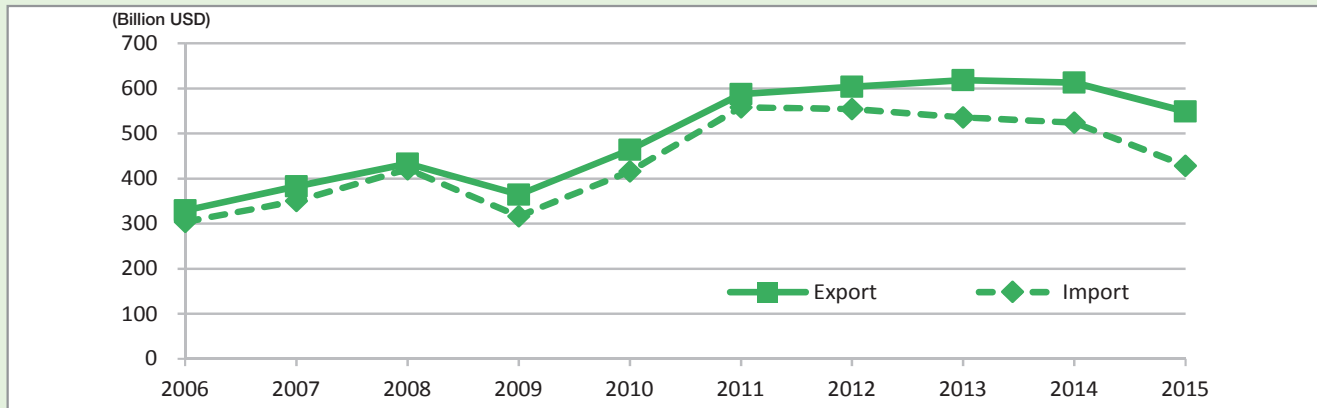
	2006	2007	2008	2009	2010	2011	2012	2013	2014	2015
Export	448	447	473	359	418	494	481	479	483	436
Import	594	628	650	494	569	644	649	659	686	628
Balance	-145	-181	-177	-135	-151	-150	-168	-180	-202	-191

Source: IMF

<http://data.imf.org/?sk=7A51304B-6426-40C0-83DD-CA473CA1FD52>

3-8 Trade Balance (South Korea)

貿易収支(韓国)



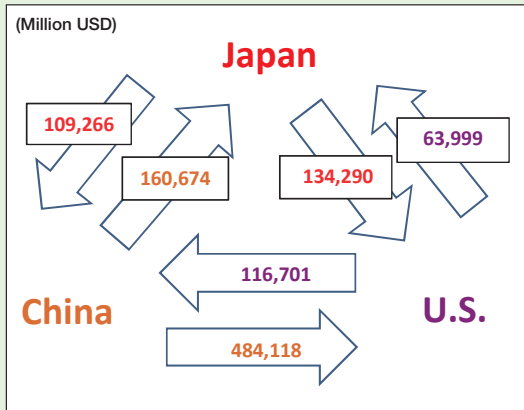
(Billion USD)

	2006	2007	2008	2009	2010	2011	2012	2013	2014	2015
Export	329	383	433	364	464	587	604	618	613	549
Import	304	350	421	316	416	558	554	535	524	429
Balance	25	33	12	48	48	29	49	83	89	120

Source: IMF

<http://data.imf.org/?sk=7A51304B-6426-40C0-83DD-CA473CA1FD52>

Trade (2015)



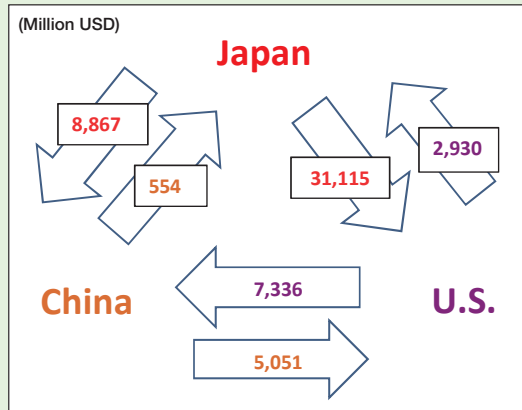
Source: U.S.-China and US-Japan data are from the U.S. Department of Commerce.

<http://bea.gov/international/index.htm>

Japan-China data is from the Ministry of Finance and Bank of Japan compiled by JETRO.

<https://www.jetro.go.jp/world/japan/stats/>

FDI Inflows and Outflows (2015)



Note: US Department of Commerce data refers to financial inflow and outflow transactions without current-cost adjustment.

Source: U.S.-China and US-Japan data are from the U.S. Department of Commerce.

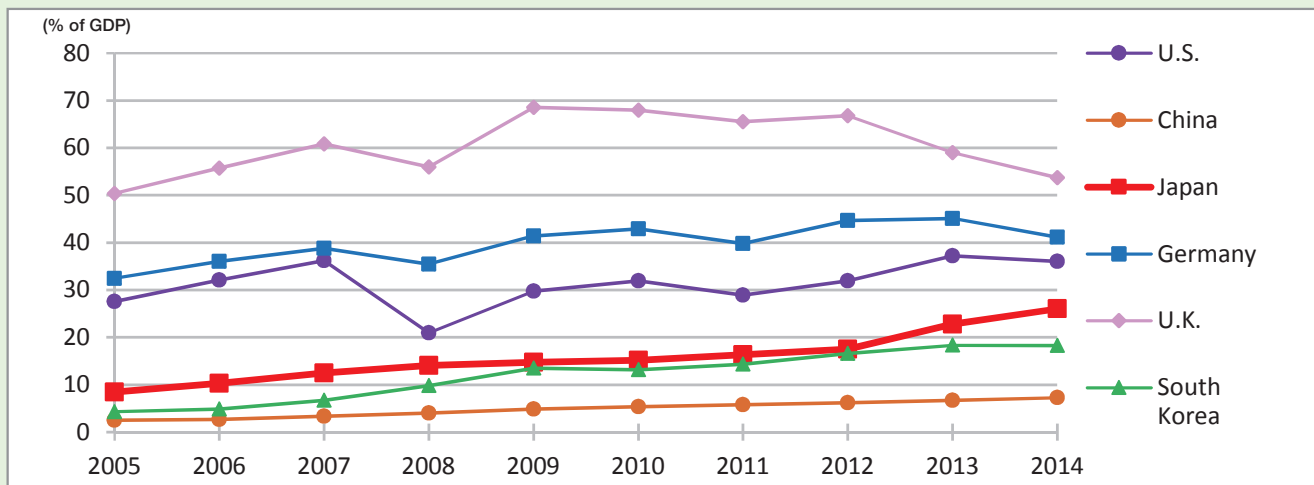
<http://bea.gov/iTable/iTable.cfm?ReqID=2&step=1#reqid=2&step=1&isuri=1>

Japan-China data is from the Ministry of Finance and Bank of Japan compiled by JETRO.

<https://www.jetro.go.jp/world/japan/stats/>

3-10 Outward Foreign Direct Investment (FDI) (Stock)

对外直接投資残高



Source: UNCTAD

<http://unctadstat.unctad.org/wds/ReportFolders/reportFolders.aspx>

Outward Foreign Direct Investment (FDI) (Stock)

(Billion USD, % of GDP)

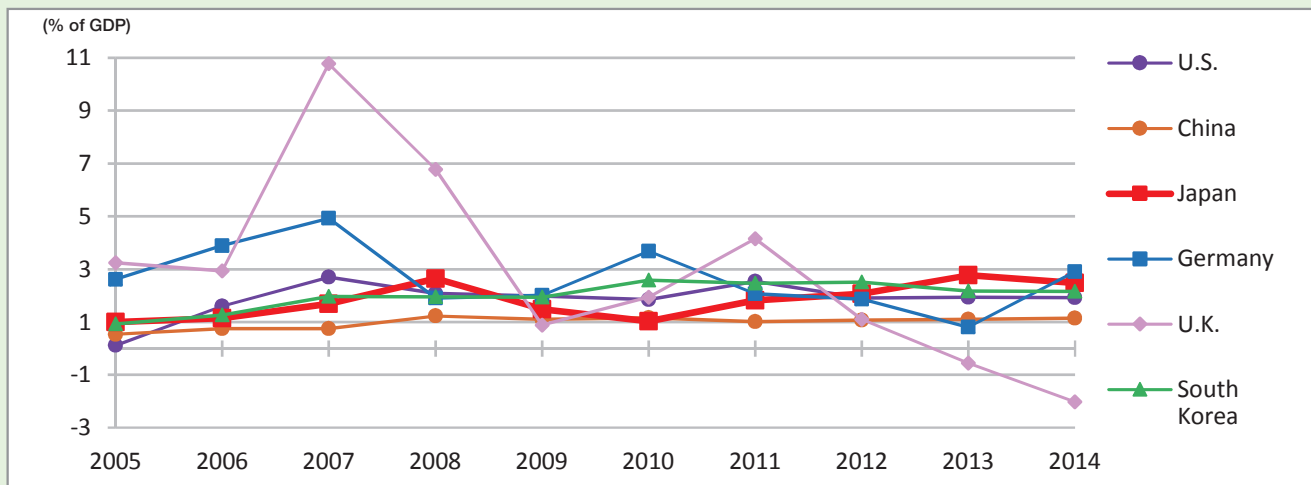
	2005	2006	2007	2008	2009	2010	2011	2012	2013	2014
U.S.	3,638 (27.6%)	4,470 (32.1%)	5,275 (36.2%)	3,102 (20.9%)	4,322 (29.8%)	4,810 (31.9%)	4,514 (28.9%)	5,196 (31.9%)	6,275 (37.2%)	6,319 (36.1%)
China	57 (2.5%)	75 (2.7%)	118 (3.4%)	184 (4.0%)	246 (4.8%)	317 (5.3%)	425 (5.8%)	513 (6.2%)	614 (6.7%)	730 (7.2%)
Japan	387 (8.5%)	450 (10.3%)	543 (12.5%)	680 (14.0%)	741 (14.7%)	831 (15.1%)	963 (16.3%)	1,038 (17.5%)	1,118 (22.8%)	1,193 (26.0%)
Germany	927 (32.5%)	1,081 (36.1%)	1,332 (38.8%)	1,327 (35.4%)	1,412 (41.4%)	1,463 (42.9%)	1,494 (39.8%)	1,579 (44.7%)	1,682 (45.1%)	1,583 (41.1%)
U.K.	1,216 (50.4%)	1,439 (55.7%)	1,803 (60.8%)	1,562 (55.9%)	1,582 (68.5%)	1,636 (67.9%)	1,698 (65.5%)	1,745 (66.7%)	1,580 (59.0%)	1,584 (53.7%)
S. Korea	39 (4.3%)	49 (4.9%)	75 (6.7%)	98 (9.8%)	121 (13.4%)	144 (13.2%)	172 (14.3%)	203 (16.6%)	239 (18.3%)	259 (18.3%)

Source: UNCTAD

<http://unctadstat.unctad.org/wds/ReportFolders/reportFolders.aspx>

3-11 Outward FDI (Flow)

対外直接投資フロー



Source: UNCTAD

<http://unctadstat.unctad.org/wds/ReportFolders/reportFolders.aspx>

Outward FDI (Flow)

(Million USD, % of GDP)

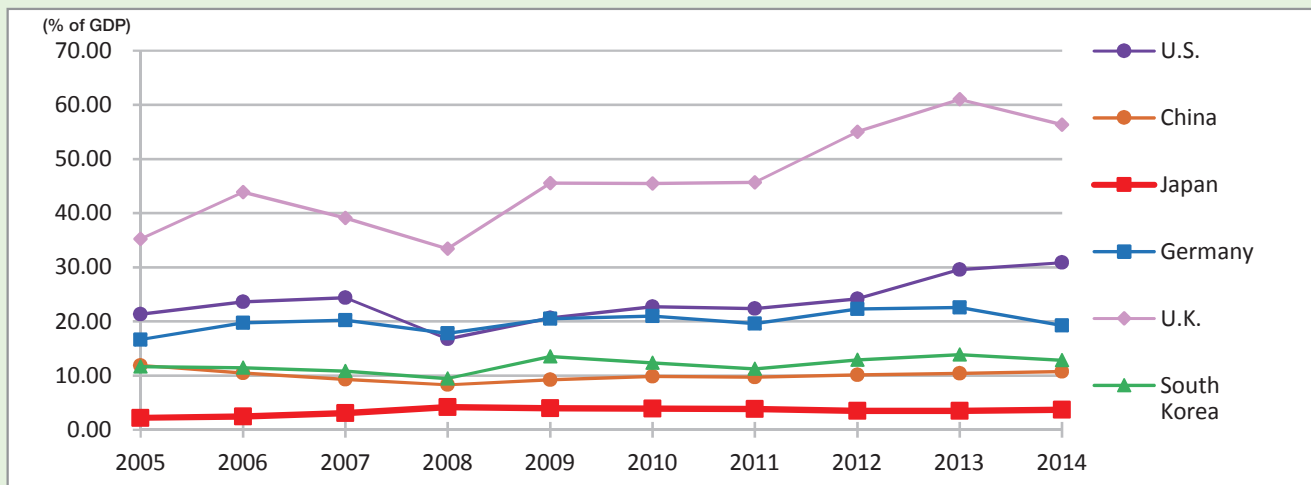
	2005	2006	2007	2008	2009	2010	2011	2012	2013	2014
U.S.	15,369 (0.1%)	224,220 (1.6%)	393,518 (2.7%)	308,296 (2.1%)	287,901 (2.0%)	277,779 (1.8%)	396,569 (2.5%)	311,347 (1.9%)	328,343 (1.9%)	336,943 (1.9%)
China	12,261 (0.5%)	21,160 (0.8%)	26,510 (0.8%)	55,910 (1.2%)	56,530 (1.1%)	68,811 (1.2%)	74,654 (1.0%)	87,804 (1.1%)	101,000 (1.1%)	116,000 (1.2%)
Japan	45,781 (1.0%)	50,266 (1.2%)	73,549 (1.7%)	128,020 (2.6%)	74,699 (1.5%)	56,263 (1.0%)	107,599 (1.8%)	122,549 (2.1%)	135,749 (2.8%)	113,629 (2.5%)
Germany	74,542 (2.6%)	116,679 (3.9%)	169,321 (4.9%)	71,507 (1.9%)	68,541 (2.0%)	125,451 (3.7%)	77,930 (2.1%)	66,089 (1.9%)	30,109 (0.8%)	112,227 (2.9%)
U.K.	78,377 (3.2%)	75,853 (2.9%)	319,330 (10.8%)	189,045 (6.8%)	20,562 (0.9%)	46,633 (1.9%)	107,801 (4.2%)	28,939 (1.1%)	-14,972 (-0.6%)	-59,628 (-2.0%)
S. Korea	8,330 (0.9%)	12,769 (1.3%)	22,074 (2.0%)	19,633 (2.0%)	17,436 (1.9%)	28,280 (2.6%)	29,705 (2.5%)	30,632 (2.5%)	28,360 (2.2%)	30,558 (2.2%)

Source: UNCTAD

<http://unctadstat.unctad.org/wds/ReportFolders/reportFolders.aspx>

3-12 Inward FDI (Stock)

対内直接投資残高



Source: UNCTAD

<http://unctadstat.unctad.org/wds/ReportFolders/reportFolders.aspx>

Inward FDI (Stock)

(Billion USD, % of GDP)

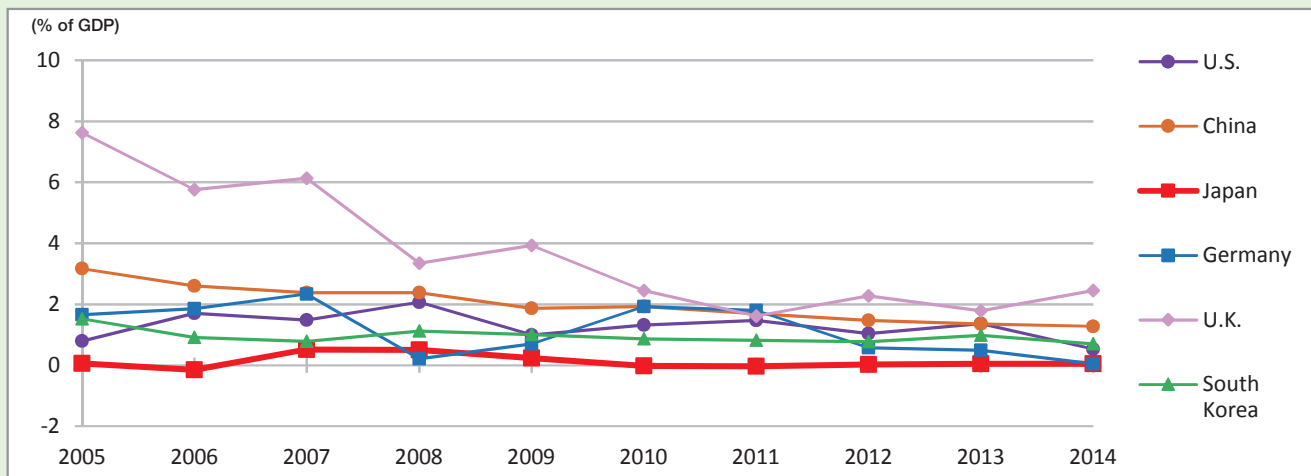
	2005	2006	2007	2008	2009	2010	2011	2012	2013	2014
U.S.	2,818 (21.4%)	3,293 (23.6%)	3,551 (24.4%)	2,486 (16.8%)	2,995 (20.6%)	3,422 (22.7%)	3,499 (22.4%)	3,929 (24.2%)	4,986 (29.5%)	5,410 (30.9%)
China	272 (11.9%)	293 (10.5%)	327 (9.3%)	378 (8.3%)	473 (9.3%)	588 (9.9%)	712 (9.7%)	833 (10.1%)	957 (10.4%)	1,085 (10.8%)
Japan	101 (2.2%)	108 (2.5%)	133 (3.0%)	203 (4.2%)	200 (4.0%)	215 (3.9%)	226 (3.8%)	206 (3.5%)	171 (3.5%)	171 (3.7%)
Germany	476 (16.7%)	591 (19.7%)	695 (20.2%)	668 (17.8%)	701 (20.5%)	717 (21.0%)	737 (19.6%)	788 (22.3%)	843 (22.6%)	744 (19.3%)
U.K.	851 (35.3%)	1,133 (43.9%)	1,159 (39.1%)	933 (33.4%)	1,052 (45.6%)	1,095 (45.5%)	1,184 (45.7%)	1,440 (55.1%)	1,635 (61.0%)	1,663 (56.4%)
S. Korea	105 (11.7%)	116 (11.4%)	122 (10.9%)	95 (9.5%)	122 (13.5%)	135 (12.4%)	135 (11.2%)	158 (12.9%)	181 (13.9%)	182 (12.9%)

Source: UNCTAD

<http://unctadstat.unctad.org/wds/ReportFolders/reportFolders.aspx>

3-13 Inward FDI (Flow)

対内直接投資フロー



Source: UNCTAD

<http://unctadstat.unctad.org/wds/ReportFolders/reportFolders.aspx>

Inward FDI (Flow)

(Million USD, % of GDP)

	2005	2006	2007	2008	2009	2010	2011	2012	2013	2014
U.S.	104,773 (0.8%)	237,136 (1.7%)	215,952 (1.5%)	306,366 (2.1%)	143,604 (1.0%)	198,049 (1.3%)	229,862 (1.5%)	169,680 (1.0%)	230,768 (1.4%)	92,397 (0.5%)
China	72,406 (3.2%)	72,715 (2.6%)	83,521 (2.4%)	108,312 (2.4%)	95,000 (1.9%)	114,734 (1.9%)	123,985 (1.7%)	121,080 (1.5%)	123,911 (1.4%)	128,500 (1.3%)
Japan	2,776 (0.1%)	-6,506 (-0.1%)	22,549 (0.5%)	24,425 (0.5%)	11,938 (0.2%)	-1,252 (-0.02%)	-1,758 (-0.03%)	1,732 (0.03%)	2,304 (0.05%)	2,090 (0.05%)
Germany	47,449 (1.7%)	55,654 (1.9%)	80,212 (2.3%)	8,127 (0.2%)	23,805 (0.7%)	65,642 (1.9%)	67,515 (1.8%)	20,316 (0.6%)	18,193 (0.5%)	1,831 (0.05%)
U.K.	183,822 (7.6%)	148,740 (5.8%)	181,661 (6.1%)	93,364 (3.3%)	90,591 (3.9%)	58,954 (2.4%)	41,803 (1.6%)	59,375 (2.3%)	47,675 (1.8%)	72,241 (2.4%)
S. Korea	13,643 (1.5%)	9,162 (0.9%)	8,827 (0.8%)	11,188 (1.1%)	9,022 (1.0%)	9,497 (0.9%)	9,773 (0.8%)	9,496 (0.8%)	12,767 (1.0%)	9,899 (0.7%)

Source: UNCTAD

<http://unctadstat.unctad.org/wds/ReportFolders/reportFolders.aspx>

3-14 FDI (Japan)

直接投資(日本)

Outward FDI (Flow) by Destination

(Million USD)

	2006	2007	2008	2009	2010	2011	2012	2013	2014	2015
1 U.S.	9,297	15,672	44,674	10,660	9,193	14,730	31,974	43,703	48,329	44,893
2 U.K.	7,271	3,026	6,744	2,126	4,624	14,125	11,882	13,319	6,544	15,205
3 China	6,169	6,218	6,496	6,899	7,252	12,649	13,479	9,104	10,389	8,867
4 Netherlands	8,497	12,440	6,514	6,698	3,288	5,346	8,638	8,636	5,608	8,305
5 Australia	466	4,140	5,232	7,136	6,371	8,149	10,890	5,835	4,908	6,690
Germany	1,128	880	3,905	2,089	-321	2,165	1,797	2,653	3,115	2,686
South Korea	1,517	1,302	2,369	1,077	1,085	2,439	3,996	3,296	3,360	1,633
ASEAN	6,923	7,790	6,309	7,002	8,930	19,645	10,675	23,619	23,134	20,244
EU	17,925	19,934	22,939	17,039	8,359	36,052	29,023	30,999	26,117	33,762
TOTAL	50,165	73,483	130,801	74,650	57,223	108,808	122,355	135,049	136,347	130,752

Note: Balance of payments basis, net. Because of the changes in the calculation method of the balance of payments, there is no continuity between the data before 2013 and the data after 2014.

Source: Ministry of Finance and Bank of Japan data compiled by JETRO
<https://www.jetro.go.jp/world/japan/stats/fdi.html>

Inward FDI (Flow) by Source

(Million USD)

	2006	2007	2008	2009	2010	2011	2012	2013	2014	2015
1 U.S.	105	13,270	11,792	1,831	2,961	-3,197	-110	1,378	6,827	5,194
2 Singapore	1,062	1,282	2,716	756	1,575	782	978	325	1,460	1,937
3 Netherlands	-7,583	-390	2,692	2,584	-7,733	3	-435	537	71	1,699
4 Hong Kong	-2,136	47	257	-81	698	125	872	172	2,253	1,273
5 France	274	504	177	371	1,128	3,438	-463	-645	1,785	1,192
China	12	15	37	-137	314	109	72	140	765	554
Germany	-542	-813	1,185	389	2,206	18	449	10	1,179	-3,203
U.K.	1,807	540	-1,289	5,629	4,817	1,792	1,212	618	456	-1,364
South Korea	108	221	279	255	274	197	559	48	559	823
ASEAN	1,063	1,283	2,740	985	1,810	831	1,003	317	1,746	2,366
EU	-4,274	642	2,943	9,207	132	4,537	-3,005	1,401	2,701	-8,195
TOTAL	-6,789	22,181	24,550	11,839	-1,359	-1,702	1,761	2,358	18,426	-42

Note: Balance of payments basis, net. Because of the changes in the calculation method of the balance of payments, there is no continuity between the data before 2013 and the data after 2014.

Source: Ministry of Finance and Bank of Japan data compiled by JETRO
<https://www.jetro.go.jp/world/japan/stats/fdi.html>

3-15 FDI (U.S.)

直接投資(米国)

Outward FDI (Flow) by Destination

(Million USD)

	2006	2007	2008	2009	2010	2011	2012	2013	2014	2015
1 Ireland	20,148	15,506	31,795	23,528	28,865	26,381	30,836	21,924	51,131	64,242
2 Netherlands	41,118	109,097	38,639	51,588	44,979	86,000	48,052	57,740	30,571	53,873
3 U.K.	30,535	21,978	29,615	28,940	38,839	25,605	41,790	25,301	27,110	31,474
4 U.K. Islands, Caribbean	-6,374	12,640	25,914	7,746	10,926	11,588	25,339	17,312	20,195	28,090
5 Singapore	8,035	14,003	8,572	4,880	15,501	12,500	15,763	20,329	22,724	20,037
China	4,226	5,243	15,971	-7,512	5,420	-1,720	-1,223	7,397	7,660	7,336
Germany	2,703	9,569	775	7,839	5,898	8,187	1,860	-2,409	-417	4,477
Japan	2,709	15,721	-1,656	11,138	917	2,787	943	6,227	-12,942	2,930
South Korea	2,518	821	2,157	3,200	2,745	3,277	1,838	2,493	2,244	2,775
ASEAN	10,292	17,864	11,087	7,845	22,008	16,453	20,443	22,637	30,285	20,586
EU	131,258	221,335	146,399	147,657	174,904	214,516	141,152	149,558	141,921	179,459
TOTAL	224,220	393,518	308,296	287,901	277,779	396,569	318,196	303,432	292,283	303,177

Source: U.S. Department of Commerce

ASEAN: Compiled by Keizai Koho Center from U.S. Department of Commerce data.

<http://bea.gov/iTable/iTable.cfm?ReqID=2&step=1#reqid=2&step=1&isuri=1>

Inward FDI (Flow) by Source

(Million USD)

	2006	2007	2008	2009	2010	2011	2012	2013	2014	2015
1 Luxembourg	17,923	16,051	6,802	17,349	29,461	11,989	10,483	34,988	14,098	143,298
2 Japan	16,466	21,134	22,321	6,544	15,805	17,077	22,114	46,413	44,777	31,115
3 Germany	39,540	-12,690	17,122	12,320	18,760	16,396	6,772	12,427	18,566	25,513
4 Canada	14,770	43,867	16,794	30,366	7,357	18,790	17,326	14,933	28,363	25,029
5 France	29,078	5,808	12,950	25,369	8,865	795	25,433	-7,021	11,153	21,839
U.K.	38,547	25,434	52,609	18,373	30,069	46,316	39,640	32,023	-95,814	18,051
China	315	8	500	500	1,037	1,105	3,419	1,920	1,979	5,051
South Korea	3,283	4,751	1,440	236	2,245	4,798	6,185	6,601	9,028	1,062
ASEAN	2,437	6,066	10,272	1,538	1,216	3,400	488	1,714	6,757	2,073
EU	177,418	129,011	181,500	94,044	110,758	102,469	138,895	90,392	15,898	248,207
TOTAL	237,136	215,952	306,366	143,604	198,049	229,862	199,034	201,393	171,601	348,402

Source: U.S. Department of Commerce

ASEAN: Compiled by Keizai Koho Center from U.S. Department of Commerce data.

<http://bea.gov/iTable/iTable.cfm?ReqID=2&step=1#reqid=2&step=1&isuri=1>

3-16 FDI (China)

直接投資(中国)

Outward FDI (Flow) by Destination

(Million USD)

	to	2006	2007	2008	2009	2010	2011	2012	2013	2014
1	Hong Kong	6,931	13,732	38,640	35,601	38,505	35,655	51,238	62,824	70,867
2	U.S.	198	196	462	909	1,308	1,811	4,048	3,873	7,596
3	British Virgin Islands	538	1,876	2,104	1,612	6,120	6,208	2,239	3,222	4,570
4	Cayman Islands	7,833	2,602	1,524	5,366	3,496	4,936	827	9,253	4,192
5	Australia	88	532	1,892	2,436	1,702	3,165	2,173	3,458	4,049
	Japan	39	39	59	84	338	149	211	434	394
	Germany	77	239	183	179	412	512	799	911	1,439
	U.K.	35	567	17	192	330	1,420	2,775	1,419	1,499
	South Korea	27	57	97	265	-722	342	942	269	549
	TOTAL	17,634	26,506	55,907	56,529	68,811	74,654	87,804	107,844	123,120

Note: Overseas direct investment includes: basic situation of domestic investors and overseas enterprises, investment, earnings and their distribution between domestic and overseas invested enterprises, import and export of commodities through overseas enterprises, approval of overseas enterprises. Statistics cover all types of overseas corporate and non-corporate enterprises by direct investment of domestic investors.

Data are from Ministry of Commerce through comprehensive survey.

Data for 2006 include only non-financial outward FDI flows.

Source: Ministry of Commerce of the People's Republic of China, National Bureau of Statistics of the People's Republic of China, State Administration of Foreign Exchange

Inward FDI (Flow) by Source

(Billion USD)

	from	2006	2007	2008	2009	2010	2011	2012	2013	2014
1	Hong Kong	20.23	27.70	41.04	46.08	60.57	70.50	65.56	73.40	81.27
2	British Virgin Islands	11.25	16.55	15.95	11.30	10.45	9.72	7.83	6.16	6.23
3	Singapore	2.26	3.18	4.44	3.60	5.43	6.10	6.31	7.23	5.83
4	Japan	4.60	3.59	3.65	4.10	4.08	6.33	7.35	7.06	4.33
5	South Korea	3.89	3.68	3.14	2.70	2.69	2.55	3.04	3.05	3.97
	U.S.	2.87	2.62	2.94	2.55	3.02	2.37	2.60	2.82	2.37
	Germany	1.98	0.73	0.90	1.22	0.89	1.13	1.45	2.08	2.07
	U.K.	0.73	0.83	0.91	0.68	0.71	0.58	0.41	0.39	0.74
	TOTAL	63.02	74.77	92.40	90.03	105.73	116.01	111.72	117.59	119.56

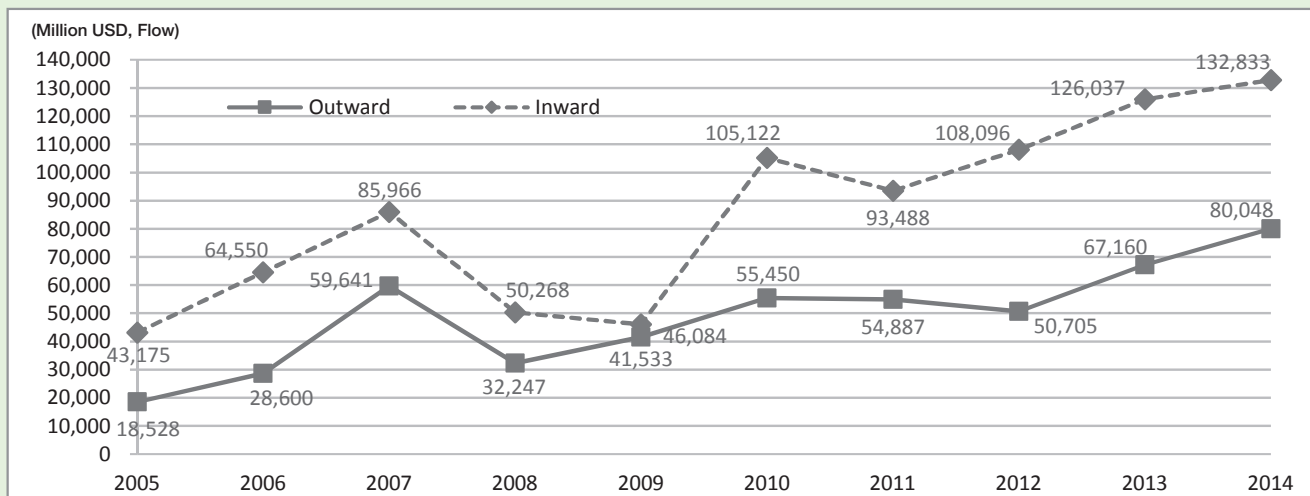
Note: Including foreign direct investments and other foreign investments, and the basic condition of registration of foreign funded enterprises.

Source: National Bureau of Statistics of the People's Republic of China

<http://www.stats.gov.cn/english/Statisticaldata/AnnualData/>

3-17 FDI (ASEAN)

直接投資 (ASEAN)



Source: UNCTAD

<http://unctadstat.unctad.org/wds/ReportFolders/reportFolders.aspx>

Inward FDI (Flow) by Source

(Million USD)

	2006	2007	2008	2009	2010	2011	2012	2013	2014	2015
1 Japan	10,295	8,823	5,512	3,451	12,987	8,284	14,851	24,750	15,705	17,395
2 U.S.	3,533	8,918	3,685	5,181	13,682	9,040	19,845	7,157	14,749	12,191
3 China	1,935	1,998	733	2,069	3,489	7,160	8,070	6,426	6,990	8,155
4 Netherlands	7,700	5,829	5,404	6,246	1,139	5,446	9,718	12,450	2,699	7,907
5 U.K.	3,860	7,973	2,540	-929	5,483	9,361	-7,716	5,736	7,583	6,698
Germany	2,118	1,450	374	-196	797	-84	-166	-639	68	409
South Korea	1,430	2,273	1,397	1,804	4,319	1,687	1,344	4,303	5,751	5,680
EU	14,979	21,485	10,409	5,660	21,145	24,190	1,670	24,511	24,990	19,666
INTRA-ASEAN	7,069	8,435	8,988	8,808	16,307	15,198	23,961	19,562	22,134	22,149
TOTAL	62,032	78,886	49,013	43,365	108,175	86,839	117,099	124,865	129,995	119,975

Note: Net basis. 2014 figures are preliminary.

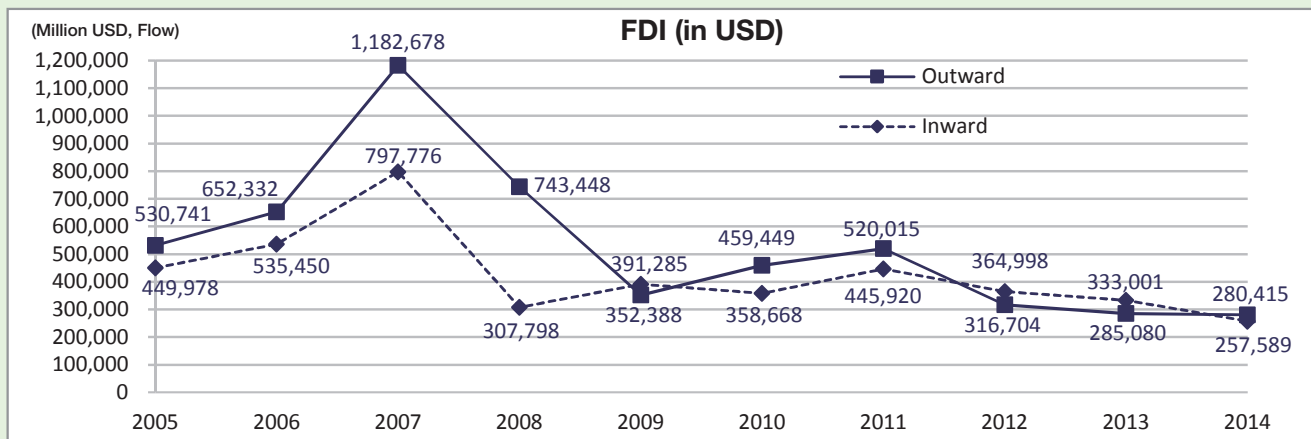
2012-2013 does not include Lao PDR data.

Source: ASEAN

http://aseanstats.asean.org/Menu.aspx?rxid=8ed9e303-708f-4b97-a474-7cccb4f63631&px_language=en&px_db=4-Foreign+Direct+Investment&px_type=PX

3-18 FDI (EU)

直接投資 (EU)



Source: UNCTAD

<http://unctadstat.unctad.org/wds/ReportFolders/reportFolders.aspx>

Outward FDI (Flow) by Destination (in EUR)

(Million EUR)	2008	2009	2010	2011	2012
1 U.S.	127,167	95,215	60,464	162,103	125,178
2 Brazil	8,634	12,592	44,940	30,453	24,996
3 Norway	3,283	3,370	7,669	6,468	18,997
4 Russia	27,630	8,773	27,730	8,296	18,957
5 China	5,946	8,101	10,457	16,660	16,340
Japan	2,741	1,151	-1,725	4,285	992
South Korea	1,335	1,185	2,448	2,217	-179

Total	919,467	608,592	574,547	967,618	487,980
--------------	----------------	----------------	----------------	----------------	----------------

Source: eurostat

<http://ec.europa.eu/eurostat/tgm/table.do?tab=table&init=1&language=en&pcode=tec00050&plugin=1><http://ec.europa.eu/eurostat/tgm/table.do?tab=table&init=1&language=en&pcode=tec00048&plugin=1>

Inward FDI (Flow) by Source (in EUR)

(Million EUR)	2008	2009	2010	2011	2012
1 U.S.	39,191	108,639	77,809	259,061	119,698
2 Switzerland	12,335	34,325	31,406	47,811	24,569
3 Canada	18,953	13,283	19,577	2,151	12,436
4 Norway	2,697	9,205	10,500	10,796	10,750
5 Liechtenstein	255	-298	1,879	-328	9,080
China	-385	62	364	4,372	8,444
Japan	3,776	5,976	-693	10,326	1,762
South Korea	-599	1,647	4,012	1,810	4,302

Total	582,587	511,151	483,354	909,309	504,982
--------------	----------------	----------------	----------------	----------------	----------------

3-19 Outbound M&A

対外M&A

		2011	2012	2013	2014	2015
U.S.	# of deals	2,320	2,231	2,055	2,362	2,392
	Value (Mil. USD)	208,276	198,903	122,815	244,926	218,824
	Top 3	U.K., Canada, France	Switzerland, U.K., Canada	U.K., Netherlands, Germany	Ireland, Canada, U.K.	U.K. Germany, Netherlands
China	# of deals	344	343	386	453	574
	Value (Mil. USD)	51,670	56,406	63,979	52,510	111,278
	Top 3	Australia, Brazil, Portugal	Canada, Australia, U.S.	U.S., H.K., Australia	H.K., U.S., Singapore	H.K., U.S., Italy
Hong Kong (H.K.)	# of deals	566	503	503	537	518
	Value (Mil. USD)	33,036	34,421	30,632	45,412	61,308
	Top 3	China, U.K., Australia	China, U.K., Netherlands	China, Netherlands, Singapore	China, U.S., Australia	China, U.K., Canada
Japan	# of deals	640	721	622	656	710
	Value (Mil. USD)	69,086	83,207	47,012	56,532	89,601
	Top 3	Switzerland, U.S., Chile	U.S., U.K., Canada	U.S., Thailand, Germany	U.S., H.K., India	U.S., H.K., U.K.
Germany	# of deals	583	499	445	504	526
	Value (Mil. USD)	17,855	31,366	21,587	109,383	20,570
	Top 3	U.S., Netherlands, India	U.S., U.K., Poland	Luxembourg, U.S., Norway	U.S., Luxembourg, Sweden	Italy, U.S., France
U.K.	# of deals	1,063	946	903	1,053	1,032
	Value (Mil. USD)	105,899	64,474	71,054	129,294	77,438
	Top 3	U.S., Australia, India	U.S., Sweden, Russia	Germany, U.S., India	U.S., Spain, Germany	U.S., Netherlands, Russia
Canada	# of deals	942	711	635	711	684
	Value (Mil. USD)	39,402	55,377	46,312	67,522	170,345
	Top 3	U.S., Australia, Belgium	U.S., U.K., Australia	U.S., Australia, U.K.	U.S., France, Isle of Man	U.S., U.K., Australia
South Korea	# of deals	150	136	96	107	76
	Value (Mil. USD)	8,311	10,803	4,445	3,607	2,793
	Top 3	U.S., China, Kazakhstan	Australia, U.S., Japan	Canada, U.S., Australia	U.S., Bangladesh, Malaysia	U.S., China, Vietnam

Note: Excluding property acquisitions.

Source: Thomson Reuters



		2011	2012	2013	2014	2015
U.S.	# of deals	1,564	1,431	1,266	1,565	1,655
	Value (Mil. USD)	152,154	181,789	128,016	283,702	424,940
	Top 3	U.K., Australia, Canada	Japan, Canada, U.K.	Canada, U.K., Japan	Germany, Japan, U.K.	Canada, Ireland, U.K.
China	# of deals	795	683	649	699	727
	Value (Mil. USD)	35,904	38,124	36,785	44,518	55,845
	Top 3	H.K., U.S., Singapore	H.K., Thailand, U.S.	H.K., U.S., Singapore	H.K., Singapore, U.S.	H.K., U.S., Qatar
Hong Kong (H.K.)	# of deals	202	156	188	237	266
	Value (Mil. USD)	13,444	9,560	18,321	32,820	57,408
	Top 3	China, Thailand, Singapore	China, U.S., U.K.	China, U.K., Sweden	China, Singapore, Japan	China, Japan, U.S.
Japan	# of deals	132	152	97	170	151
	Value (Mil. USD)	8,328	15,110	4,889	10,670	25,537
	Top 3	U.S., Israel, France	U.S., U.K., S. Korea	U.S., Taiwan, H.K.	U.S., Singapore, H.K.	France, U.S., Denmark
Germany	# of deals	653	614	560	645	618
	Value (Mil. USD)	28,797	35,087	62,901	46,631	44,716
	Top 3	U.S., U.K., Switzerland	U.S., Canada, U.K.	U.K., U.S., Spain	U.K., U.S., Luxembourg	U.S., Canada, U.K.
U.K.	# of deals	881	840	802	939	1,033
	Value (Mil. USD)	92,641	90,307	48,389	93,786	362,678
	Top 3	U.S., France, H.K.	U.S., France, Japan	U.S., France, Japan	U.S., Switzerland, Qatar	Belgium, Netherlands, U.S.
Canada	# of deals	536	536	477	489	516
	Value (Mil. USD)	41,393	59,539	20,650	55,402	19,276
	Top 3	U.S., China, U.K.	China, U.S., Switzerland	U.S., U.K., Colombia	U.S., Spain, Switzerland	U.S., France, China
South Korea	# of deals	142	107	118	152	160
	Value (Mil. USD)	4,679	3,255	5,541	16,472	7,645
	Top 3	U.S., Australia, Japan	H.K., Japan, Canada	U.S., Japan, H.K.	Belgium, U.S., Saudi Arabia	Japan, China, Saudi Arabia

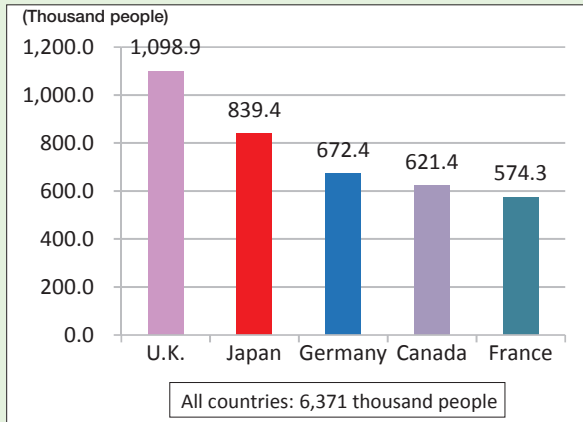
Note: Excluding property acquisitions.

Source: Thomson Reuters

3-21 Employment and Exports by Foreign Affiliated Companies in the U.S.

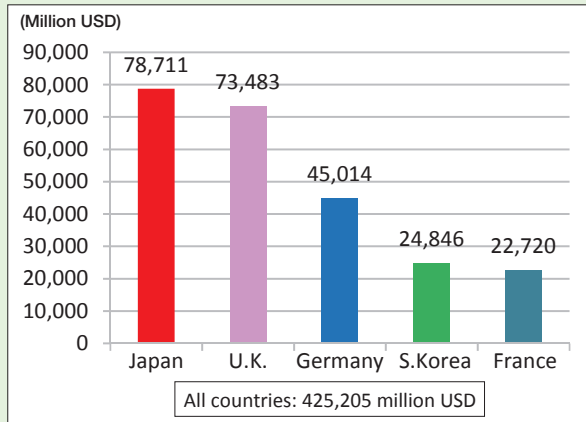
在米外資系企業の雇用と輸出額

Employment (2014)



Source: U.S. Department of Commerce
<http://bea.gov/international/di1fdiop.htm>

Exports (2014)



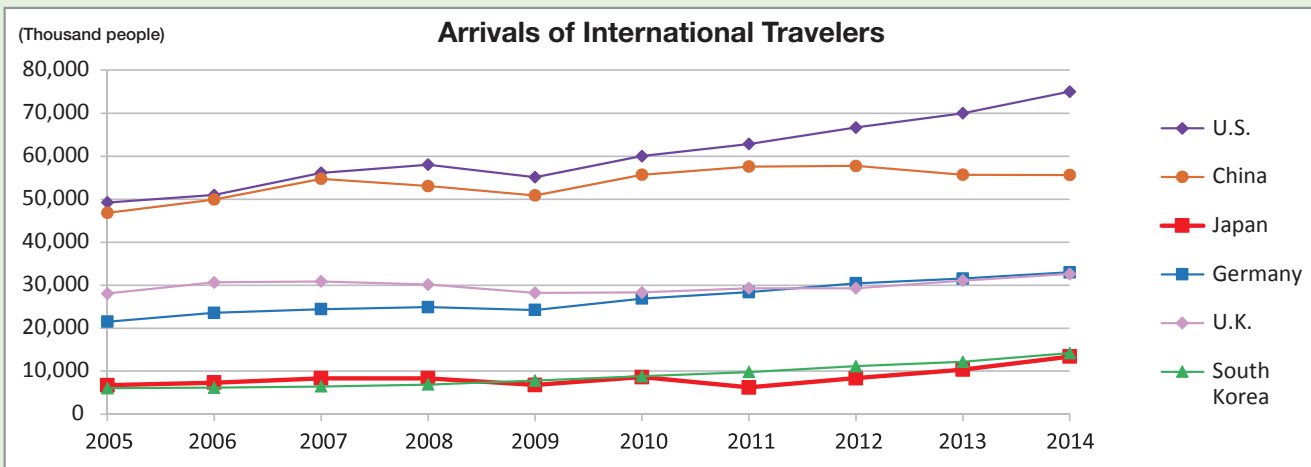
(as of 31st August, 2016)

Ranking	Player	MLB career	Hits	Reference
1	Pete Rose	1963-1986	4,256	Minor league 427 hits, total 4,683 hits
2	Ty Cobb	1905-1928	4,191	
3	Hank Aaron	1954-1976	3,771	
4	Stan Musial	1941-1963	3,630	
5	Tris Speaker	1907-1928	3,515	
6	Derek Jeter	1995-2014	3,465	
7	Honus Wagner	1897-1917	3,430	
8	Carl Yastrzemski	1961-1983	3,419	
9	Paul Molitor	1978-1998	3,319	
10	Eddie Collins	1906-1930	3,314	
26	Ichiro Suzuki	2001- current	3,011	NPB 1278 hits, total 4,289 hits

Source: Nippon Professional Baseball Organization, The Official Site of Major League Baseball, Baseball-Reference
<http://npb.jp/bis/players/w2006b01.html>
<http://mlb.mlb.com/stats/sortable.jsp>
<http://www.baseball-reference.com/register/player.cgi?id=rose--003pet>

4-1 Inbound Tourism

外国人訪問者数



Note: S. Korea and Japan indicate arrivals of non-resident visitors, including same-day visitors. All other countries indicate arrivals of non-resident overnight visitors (tourists).

Source: The World Tourism Organization (UNWTO)
<http://www.e-unwto.org/toc/unwtotfb/current>

Arrivals of International Travelers

(Thousand people)

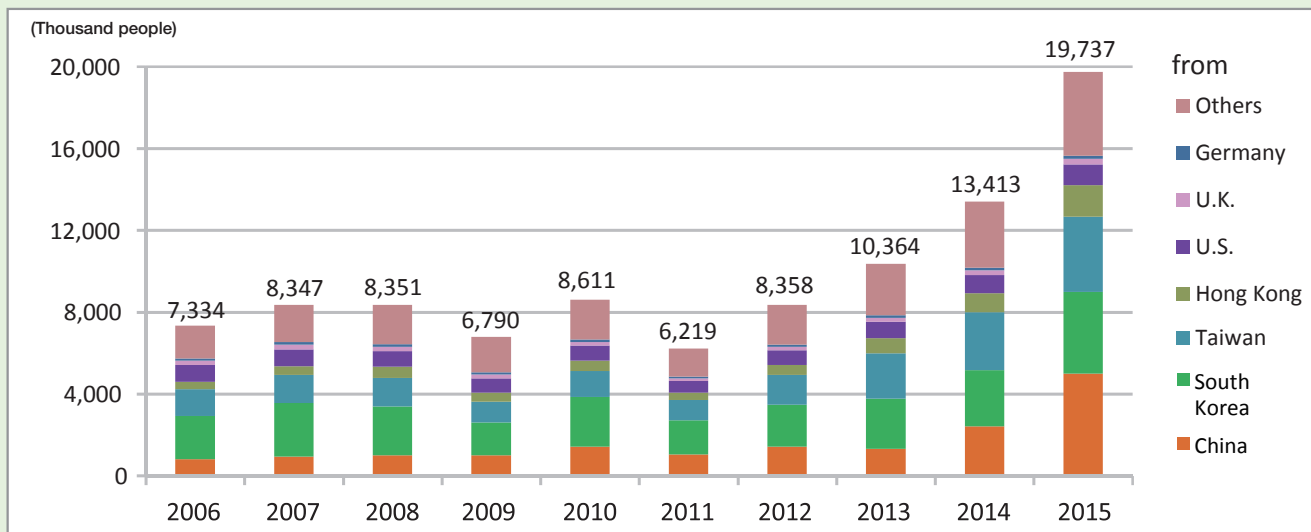
	2005	2006	2007	2008	2009	2010	2011	2012	2013	2014
France	74,988	77,916	80,853	79,218	76,764	76,647	80,499	81,980	83,634	83,767
U.S.	49,206	50,977	56,135	58,007	55,103	60,010	62,821	66,657	69,995	75,011
Spain	55,914	58,004	58,666	57,192	52,178	52,677	56,177	57,464	60,675	64,995
China	46,809	49,913	54,720	53,049	50,875	55,664	57,581	57,725	55,686	55,622
Italy	36,513	41,058	43,654	42,734	43,239	43,626	46,119	46,360	47,704	48,576
Turkey	20,273	18,916	26,122	29,792	30,187	31,364	34,654	35,698	37,795	39,811
Germany	21,500	23,569	24,421	24,884	24,220	26,875	28,374	30,411	31,545	32,999
United Kingdom	28,039	30,654	30,870	30,142	28,199	28,295	29,306	29,282	31,063	32,613
Mexico	21,915	21,353	21,606	22,931	22,346	23,290	23,403	23,403	24,151	29,346
Hong Kong	14,773	15,821	17,154	17,319	16,926	20,085	22,316	23,770	25,661	27,770
Malaysia	16,431	17,547	20,973	22,052	23,646	24,577	24,714	25,033	25,715	27,437
Austria	19,952	20,269	20,773	21,935	21,355	22,004	23,012	24,151	24,813	25,291
South Korea	6,023	6,155	6,448	6,891	7,818	8,798	9,795	11,140	12,176	14,202
Japan	6,728	7,334	8,347	8,351	6,790	8,611	6,219	8,358	10,364	13,413

Note: S. Korea and Japan indicate arrivals of non-resident visitors, including same-day visitors. All other countries indicate arrivals of non-resident overnight visitors (tourists).

Source: The World Tourism Organization (UNWTO)
<http://www.e-unwto.org/toc/unwtotfb/current>

4-2 Foreign Visitors to Japan

訪日外客数



Source: Japan National Tourism Organization

http://www.jnto.go.jp/jpn/reference/tourism_data/visitor_trends/index.html

Foreign Visitors to Japan

(Thousand people)

	2006	2007	2008	2009	2010	2011	2012	2013	2014	2015
China	812	942	1,000	1,006	1,413	1,043	1,425	1,314	2,409	4,994
South Korea	2,117	2,601	2,382	1,587	2,440	1,658	2,043	2,456	2,755	4,002
Taiwan	1,309	1,385	1,390	1,024	1,268	994	1,466	2,211	2,830	3,677
Hong Kong	352	432	550	450	509	365	482	746	926	1,524
U.S.	817	816	768	700	727	566	717	799	892	1,033
U.K.	216	222	207	181	184	140	174	192	220	258
Germany	115	125	126	111	124	81	109	122	140	163
Others	1,595	1,824	1,926	1,731	1,946	1,372	1,943	2,524	3,241	4,086
Total	7,334	8,347	8,351	6,790	8,611	6,219	8,358	10,364	13,413	19,737

Note: Data for 2015 are provisional.

Source: Japan National Tourism Organization

http://www.jnto.go.jp/jpn/reference/tourism_data/visitor_trends/index.html

4-3 Outbound Tourism

外国旅行者数



Note: S. Korea and Japan indicate arrivals of non-resident visitors, including same-day visitors. All other countries indicate arrivals of non-resident overnight visitors (tourists).

Source: The World Tourism Organization (UNWTO)
<http://www.e-unwto.org/toc/unwtotfb/current>

Departures of International Travelers

(Thousand people)

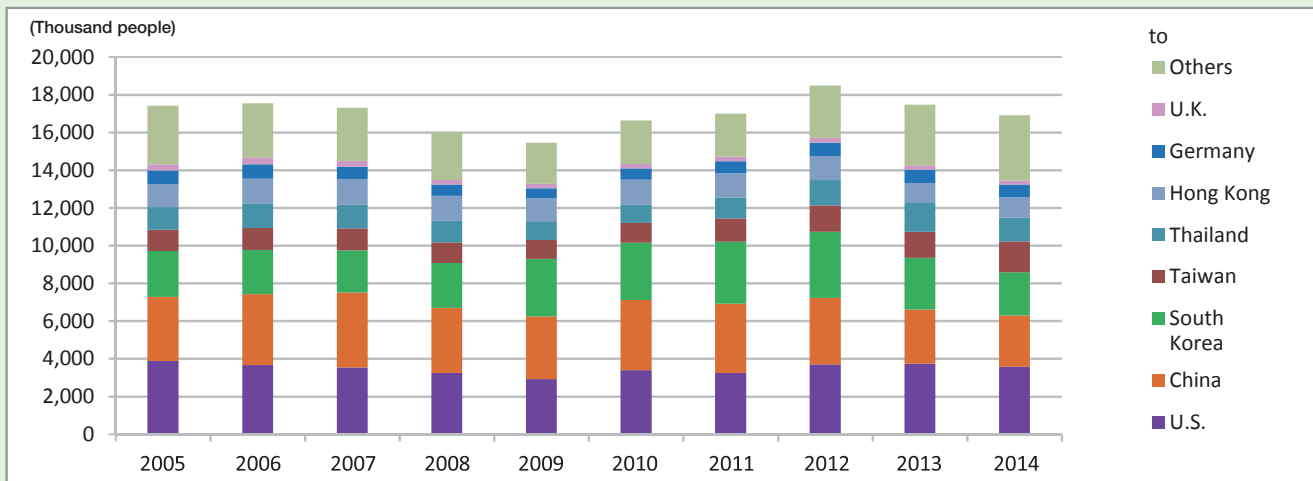
	2005	2006	2007	2008	2009	2010	2011	2012	2013	2014
China	31,026	34,524	40,954	45,844	47,656	57,386	70,250	83,183	98,185	116,590
Germany	77,400	71,200	70,400	73,000	72,300	N/A		82,729	87,459	83,008
U.S.	63,503	63,663	64,049	63,653	62,051	61,061	59,209	60,697	61,874	68,303
U.K.	66,494	69,536	69,450	69,011	58,614	55,562	56,836	56,538	57,792	60,082
Russia	28,416	29,107	34,285	36,538	34,276	39,323	43,726	47,813	54,069	45,889
Canada	21,099	22,731	25,163	27,034	26,204	28,680	30,450	32,276	32,971	33,518
Italy	24,796	25,697	27,734	28,284	29,060	29,823	29,295	28,810	27,798	28,460
France	22,480	22,240	28,103	25,506	25,140	25,041	26,155	25,450	26,243	28,180
Ukraine	16,454	16,875	17,335	15,499	15,334	17,180	19,773	21,433	23,761	22,438
Saudi Arabia	4,403	2,000	4,126	4,087	6,032	17,827	15,281	18,614	19,154	19,824
Japan	17,404	17,535	17,295	15,987	15,446	16,637	16,994	18,491	17,473	16,903
South Korea	10,080	11,610	13,325	11,996	9,494	12,488	12,694	13,737	14,846	16,081

Note: S. Korea and Japan indicate arrivals of non-resident visitors, including same-day visitors. All other countries indicate arrivals of non-resident overnight visitors (tourists).

Source: The World Tourism Organization (UNWTO)
<http://www.e-unwto.org/toc/unwtotfb/current>

4-4 Japanese Outbound Travelers

日本人出国者数



Source: Japan National Tourism Organization

<http://www.jnto.go.jp/jpn/reference/index.html>

Statistisches Bundesamt

<https://www.destatis.de/DE/Publikationen/Thematisch/BinnenhandelGastgewerbeTourismus/Tourismus/TourismusInZahlen.html>

Japanese Outbound Travelers

(Thousand people)

	2005	2006	2007	2008	2009	2010	2011	2012	2013	2014
U.S.	3,884	3,673	3,531	3,250	2,918	3,386	3,250	3,698	3,730	3,579
China	3,390	3,746	3,977	3,446	3,317	3,731	3,658	3,518	2,878	2,718
South Korea	2,440	2,339	2,236	2,378	3,053	3,023	3,289	3,519	2,748	2,280
Taiwan	1,124	1,161	1,166	1,087	1,001	1,053	1,243	1,393	1,381	1,635
Thailand	1,197	1,312	1,278	1,154	1,004	980	1,103	1,341	1,516	1,265
Hong Kong	1,211	1,311	1,324	1,325	1,204	1,317	1,284	1,255	1,057	1,079
Germany	730	760	662	598	538	605	643	734	712	671
U.K.	332	342	308	239	235	223	237	243	221	222
Others	3,095	2,891	2,812	2,512	2,174	2,319	2,288	2,790	3,231	3,454
Total	17,404	17,535	17,295	15,987	15,446	16,637	16,994	18,491	17,473	16,903

Source: Japan National Tourism Organization

<http://www.jnto.go.jp/jpn/reference/index.html>

Statistisches Bundesamt

<https://www.destatis.de/DE/Publikationen/Thematisch/BinnenhandelGastgewerbeTourismus/Tourismus/TourismusInZahlen.html>

4-5 Foreign Students by Destination (2013)

各国の留学生受入れ数

(Number of foreign and international students in tertiary education, by country of origin and destination)

to Japan		to U.S.		to U.K.		to Germany		to China		to South Korea							
from	students	from	students	from	students	from	students	from	students	from	students						
1	China	89,788	1	China	225,474	1	China	81,776	1	China	19,441	1	China	38,109			
2	S. Korea	16,509	2	India	92,597	2	India	22,155	2	Russia	9,480	2	Mongolia	2,475			
3	Vietnam	4,241	3	S. Korea	67,592	3	Nigeria	17,325	3	Austria	8,277	3	N/A	3	Vietnam	2,123	
4	Nepal	2,426	4	Saudi Arabia	42,651	4	U.S.	14,652	4	Bulgaria	6,186	4	U.S.	1,447			
5	Malaysia	2,275	5	Canada	26,182	5	Germany	14,192	5	Poland	5,772	5	5	Japan	1,154		
6	Indonesia	2,244	6	Japan	18,727	6	Malaysia	13,322	6	France	5,682	6	6	Indonesia	745		
7	Thailand	2,150	7	Vietnam	15,406	7	Hong Kong	12,946	13	U.S.	3,884	13	7	Pakistan	597		
8	U.S.	2,098	8	Mexico	13,589	8	Ireland	12,579	14	S. Korea	3,469	14	8	India	585		
14	Germany	553	11	Germany	9,397	24	S. Korea	4,567	26	Japan	1,658	26	28	Germany	100		
17	U.K.	407	12	U.K.	9,060	31	Japan	3,071	31	U.K.	1,499	31	30	U.K.	93		
Total		135,803	Total		784,427	Total		416,693	Total		196,619	Total		96,409	Total		55,536

Source: OECD

http://www.oecd-ilibrary.org/education/education-at-a-glance_19991487

(Number of foreign and international students in tertiary education, by country of origin)

1	China	729,338
2	India	192,206
3	Germany	120,570
4	South Korea	111,218
5	Saudi Arabia	77,850
6	France	75,435
7	Kazakhstan	68,084
8	U.S.	66,311
9	Malaysia	62,315
10	Nigeria	61,117

11	Iran	59,402
12	Russia	55,756
13	Vietnam	55,515
14	Turkey	51,402
15	Turkmenistan	49,451
16	Belarus	49,162
17	Italy	49,069
18	Canada	47,689
19	Ukraine	45,229
20	Pakistan	44,113

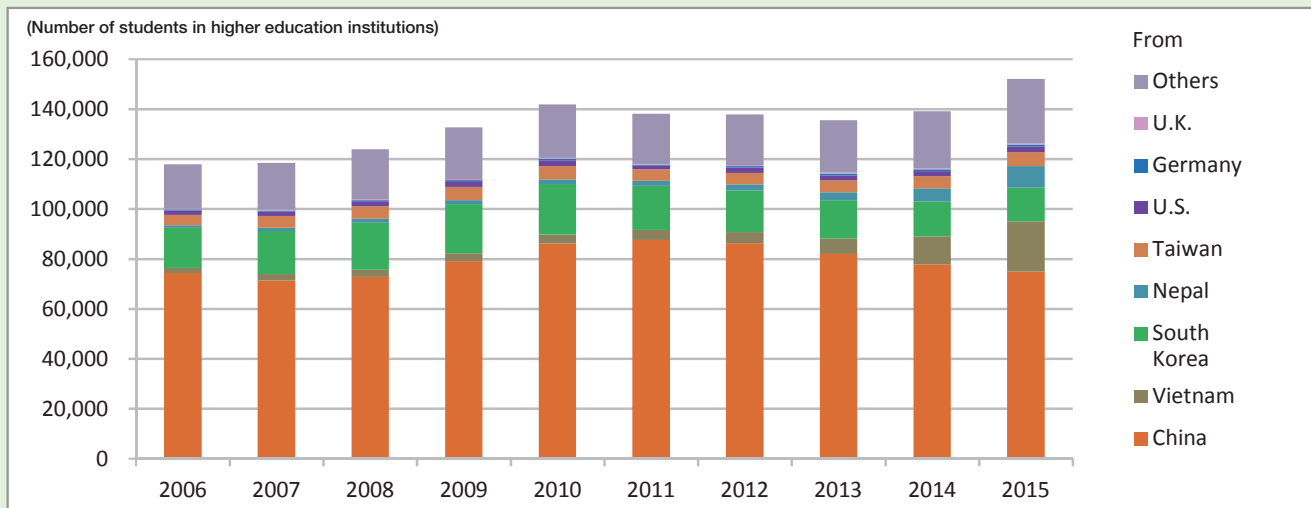
25	Japan	33,196
32	U.K.	29,234

Source: OECD

http://www.oecd-ilibrary.org/education/education-at-a-glance_19991487

4-7 Foreign Students in Japan

日本への留学生



Source: Japan Student Services Organization
http://www.jasso.go.jp/about/statistics/intl_student_e/index.html

Foreign Students in Japan

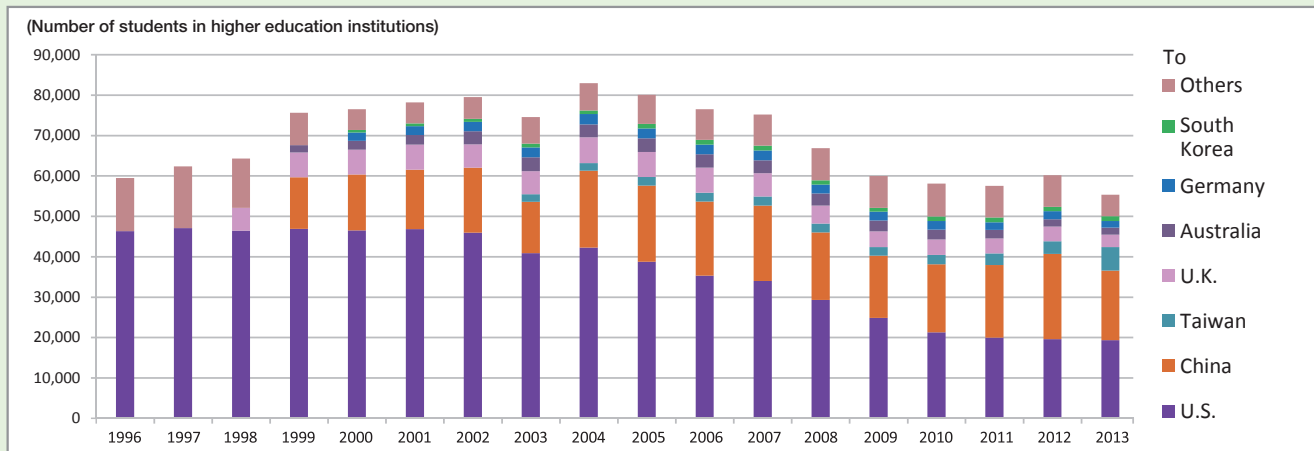
(Number of students in higher education institutions)

	2006	2007	2008	2009	2010	2011	2012	2013	2014	2015
China	74,292	71,277	72,766	79,082	86,173	87,533	86,324	81,884	77,792	74,921
Vietnam	2,119	2,582	2,873	3,199	3,597	4,033	4,373	6,290	11,174	20,131
South Korea	15,974	17,274	18,862	19,605	20,202	17,640	16,651	15,304	13,940	13,397
Nepal	998	1,309	1,476	1,628	1,829	2,016	2,451	3,188	5,291	8,691
Taiwan	4,211	4,686	5,082	5,332	5,297	4,571	4,617	4,719	4,971	5,610
U.S.	1,790	1,805	2,024	2,230	2,348	1,456	2,133	2,083	1,975	2,223
Germany	393	449	479	450	554	393	566	599	674	804
U.K.	333	370	400	427	452	364	429	452	454	426
Others	17,817	18,746	19,867	20,767	21,322	20,069	20,212	21,000	22,914	25,859
Total	117,927	118,498	123,829	132,720	141,774	138,075	137,756	135,519	139,185	152,062

Source: Japan Student Services Organization
http://www.jasso.go.jp/about/statistics/intl_student_e/index.html

4-8 Overseas Japanese in Higher Education Institutions

海外高等教育機関への日本人留学生



Source: Ministry of Education, Culture, Sports, Science and Technology

<http://www.mext.go.jp/>

Institute of International Education (IIE)

<http://www.iie.org/Research-and-Publications/Open-Doors/Data/Fact-Sheets-by-Country#.V1k6OCZJn6S>

Overseas Japanese in Higher Education Institutions

(Number of students in higher education institutions)

	1996	1997	1998	1999	2000	2001	2002	2003	2004	2005	2006	2007	2008	2009	2010	2011	2012	2013
U.S.	46,292	47,073	46,406	46,872	46,497	46,810	45,960	40,835	42,215	38,712	35,282	33,974	29,264	24,842	21,290	19,966	19,568	19,334
China	N/A	N/A	N/A	12,784	13,806	14,692	16,084	12,765	19,059	18,874	18,363	18,640	16,733	15,409	16,808	17,961	21,126	17,226
Taiwan	N/A	N/A	N/A	N/A	N/A	N/A	N/A	1,825	1,879	2,126	2,188	2,297	2,182	2,142	2,302	2,861	3,097	5,798
U.K.	N/A	N/A	5,686	6,150	6,163	6,206	5,741	5,729	6,395	6,179	6,200	5,706	4,465	3,871	3,851	3,705	3,633	3,071
Australia	N/A	N/A	N/A	1,796	2,200	2,407	3,271	3,462	3,172	3,380	3,305	3,249	2,974	2,701	2,413	2,117	1,855	1,732
Germany	N/A	N/A	N/A	N/A	2,040	2,182	2,317	2,438	2,547	2,470	2,377	2,385	2,234	2,140	2,135	1,867	1,955	1,658
South Korea	N/A	N/A	N/A	N/A	613	697	721	938	914	1,106	1,212	1,235	1,062	989	1,147	1,190	1,107	1,154
Others	13,168	15,251	12,192	7,984	5,145	5,157	5,361	6,559	6,764	7,176	7,565	7,670	7,919	7,829	8,114	7,834	7,797	5,377
Total	59,460	62,324	64,284	75,586	76,464	78,151	79,455	74,551	82,945	80,023	76,492	75,156	66,833	59,923	58,060	57,501	60,138	55,350

Notes: US: Foreign students are comprised of students that are enrolled in US higher education institutions who do not have US citizenship, including permanent residents.

China: Foreign students are comprised of students with a student visa (study period is 180 days or more) or visitor visa (study period is less than 180 days) who are enrolled in Chinese higher education institutions.

Taiwan: Foreign students are comprised of students who are enrolled in Taiwanese higher education institutions, including short-term students.

Others: From 2013, foreign students comprised of students in higher education institutions who moved from a previous country of residence or origin to another country for the purpose of studying abroad for a degree; does not include short-term students such as those in exchange programs.

Until 2012 statistics, foreign students are comprised of students who are not citizens of the host country.

Source: Ministry of Education, Culture, Sports, Science and Technology

http://www.mext.go.jp/a_menu/koutou/ryugaku/1345878.htm

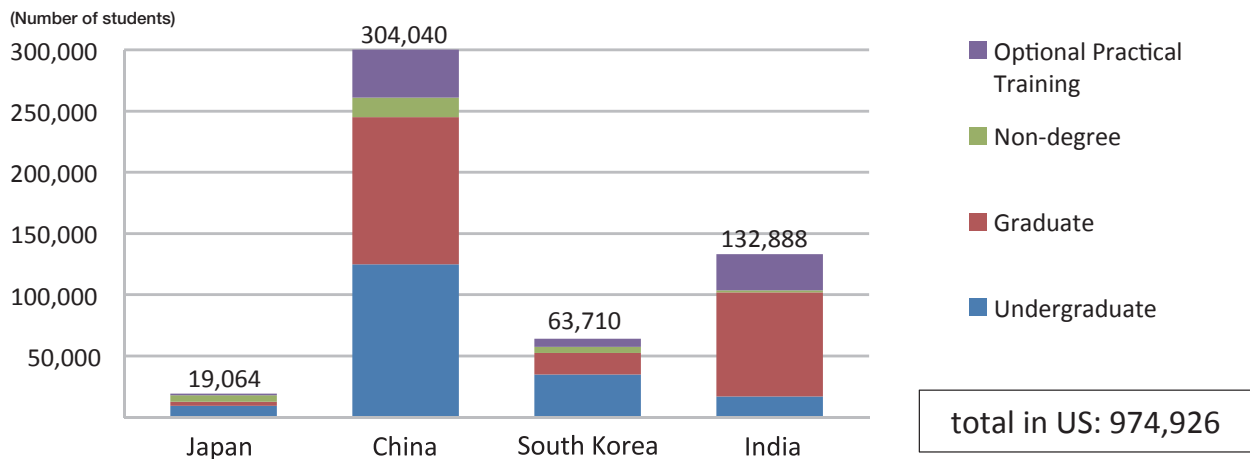
Institute of International Education (IIE)

<http://www.iie.org/Research-and-Publications/Open-Doors/Data/Fact-Sheets-by-Country/2015#.V70hhbckrZ4>

4-9 International Students in the U.S. (2014-2015)

在米留学生

International Students in U.S. Higher Education Institutions (2014-2015)



Source: IIE

<http://www.iie.org/Research-and-Publications/Open-Doors/Data/International-Students#.V47N1rh97IU>

International Students in U.S. Higher Education Institutions (2014-2015)

(Number of students)

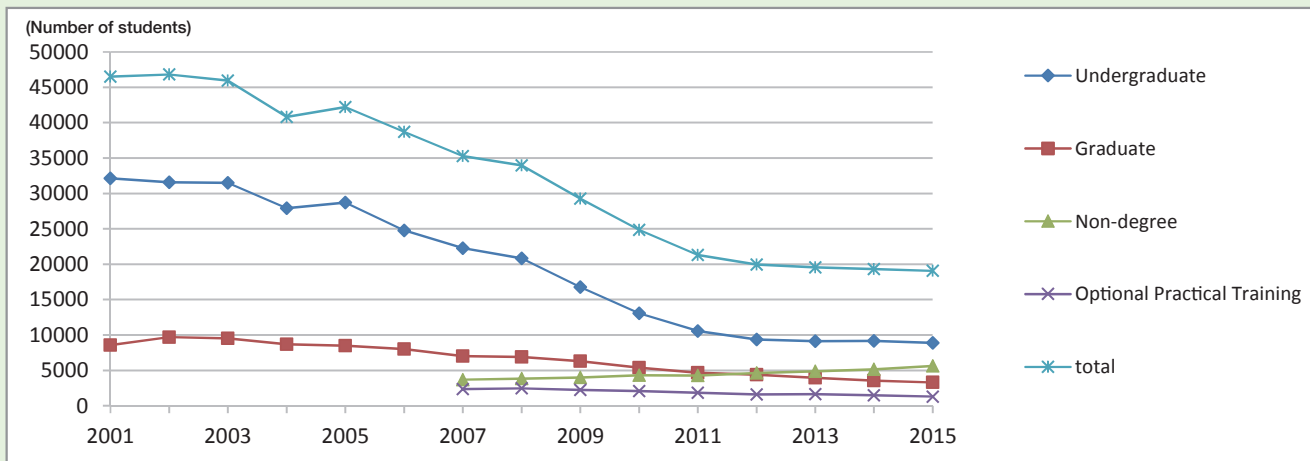
	Undergraduate	Graduate	Non-degree	Optional Practical Training	Total
Japan	8,877	3,290	5,612	1,285	19,064
China	124,552	120,331	16,043	43,114	304,040
South Korea	34,651	17,605	4,819	6,635	63,710
India	16,521	85,055	1,924	29,388	132,888
Others	214,223	135,947	65,189	39,865	455,224
Total	398,824	362,228	93,587	120,287	974,926

Source: IIE

<http://www.iie.org/Research-and-Publications/Open-Doors/Data/International-Students#.V47N1rh97IU>

4-10 Japanese Students in the U.S. by Academic Level

学位別在米日本人留学生



Source: IIE

<http://www.iie.org/Research-and-Publications/Open-Doors/Data/International-Students/By-Academic-Level-and-Place-of-Origin>

Japanese Students in the U.S. by Academic Level

(Number of students)

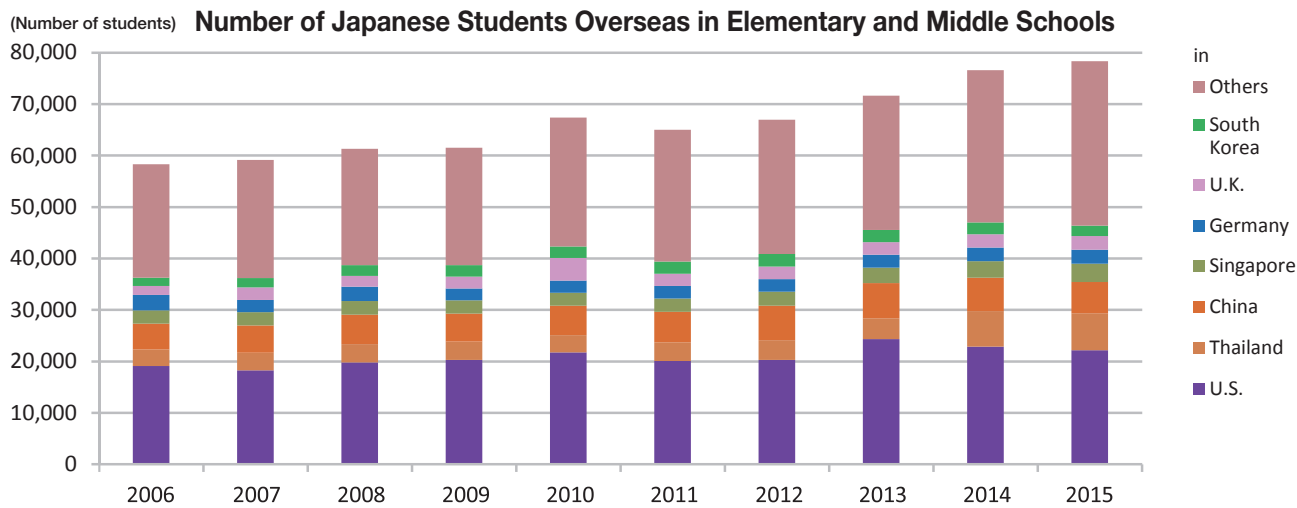
	2001	2002	2003	2004	2005	2006	2007	2008	2009	2010	2011	2012	2013	2014	2015
Undergraduate	32,136	31,588	31,489	27,925	28,708	24,759	22,247	20,831	16,770	13,063	10,544	9,359	9,126	9,155	8,877
Graduate	8,560	9,691	9,516	8,681	8,497	8,025	7,008	6,878	6,287	5,390	4,650	4,403	3,944	3,562	3,290
Non-degree	N/A	N/A	N/A	N/A	N/A	N/A	3,677	3,806	3,970	4,321	4,276	4,611	4,868	5,159	5,612
Optional Practical Training	N/A	N/A	N/A	N/A	N/A	N/A	2,350	2,459	2,237	2,068	1,820	1,593	1,630	1,458	1,285
total	46,497	46,810	45,960	40,835	42,215	38,712	35,282	33,974	29,264	24,842	21,290	19,966	19,568	19,334	19,064

Source: IIE

<http://www.iie.org/Research-and-Publications/Open-Doors/Data/International-Students/By-Academic-Level-and-Place-of-Origin>

4-11 Overseas Japanese in Elementary and Middle Schools

在留邦人子女数(小中学生)



Source: Ministry of Foreign Affairs
<http://www.mofa.go.jp/mofaj/toko/tokei/index.html>

Number of Japanese Students Overseas in Elementary and Middle Schools

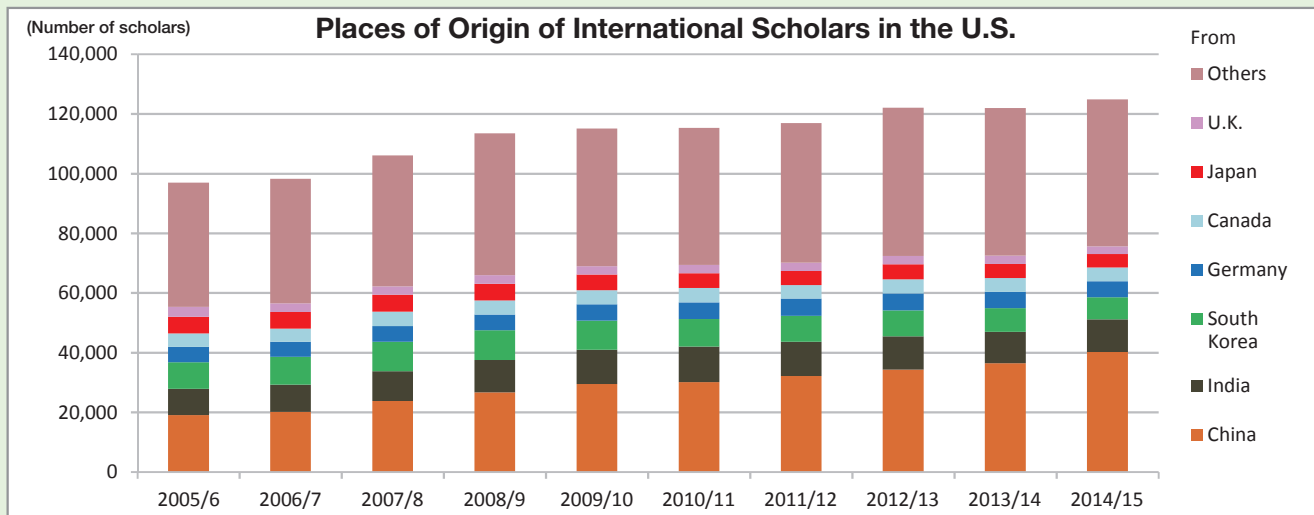
(Number of students)

	2006	2007	2008	2009	2010	2011	2012	2013	2014	2015
U.S.	19,073	18,219	19,788	20,268	21,700	20,011	20,233	24,289	22,842	22,099
Thailand	3,204	3,403	3,515	3,508	3,393	3,681	3,838	4,039	6,916	7,220
China	4,996	5,310	5,708	5,499	5,689	5,937	6,739	6,876	6,479	6,084
Singapore	2,604	2,624	2,697	2,548	2,511	2,521	2,720	2,992	3,226	3,513
Germany	3,024	2,339	2,772	2,322	2,338	2,485	2,394	2,520	2,652	2,761
U.K.	1,749	2,423	2,126	2,315	4,396	2,344	2,467	2,446	2,563	2,648
South Korea	1,574	1,835	2,079	2,215	2,256	2,393	2,435	2,375	2,294	2,017
Others	22,080	22,956	22,567	22,813	25,039	25,578	26,134	26,091	29,564	31,970
Total	58,304	59,109	61,252	61,488	67,322	64,950	66,960	71,628	76,536	78,312
Total of Japanese Overseas	1,063,695	1,085,671	1,116,993	1,131,807	1,143,357	1,182,557	1,249,577	1,258,263	1,290,175	1,317,078

Source: Ministry of Foreign Affairs
<http://www.mofa.go.jp/mofaj/toko/tokei/index.html>

4-12 International Scholars in the U.S.

在米外国人研究者数



Source: IIE

<http://www.iie.org/Research-and-Publications/Open-Doors/Data/International-Scholars/All-Places-of-Origin#.V1Z-niZJn6T>

Places of Origin of International Scholars in the U.S.

(Number of scholars)

	2005/6	2006/7	2007/8	2008/9	2009/10	2010/11	2011/12	2012/13	2013/14	2014/15
China	19,017	20,149	23,779	26,645	29,471	30,094	32,120	34,230	36,409	40,193
India	8,836	9,138	9,959	10,814	11,453	11,930	11,467	11,184	10,506	10,937
South Korea	8,907	9,291	9,888	9,975	9,796	9,257	8,769	8,696	7,934	7,415
Germany	5,117	5,039	5,269	5,300	5,476	5,588	5,744	5,710	5,546	5,318
Canada	4,496	4,398	4,758	4,692	4,694	4,745	4,493	4,741	4,551	4,611
Japan	5,600	5,557	5,692	5,635	5,250	4,968	4,783	5,041	4,705	4,511
U.K.	3,334	2,877	2,823	2,846	2,768	2,772	2,741	2,787	2,805	2,635
Others	41,674	41,790	43,955	47,587	46,190	45,959	46,800	49,670	49,458	49,241
Total	96,981	98,239	106,123	113,494	115,098	115,313	116,917	122,059	121,914	124,861

Source: IIE

<http://www.iie.org/Research-and-Publications/Open-Doors/Data/International-Scholars/All-Places-of-Origin#.V1Z-niZJn6T>

4-13 University Rankings (2015-2016)

大学ランキング

The Times Higher Education World University Rankings (2015-2016)

	Institution	Country
1	California Institute of Technology	U.S.
2	University of Oxford	U.K.
3	Stanford University	U.S.
4	University of Cambridge	U.K.
5	Massachusetts Institute of Technology	U.S.
6	Harvard University	U.S.
7	Princeton University	U.S.
8	Imperial College London	U.K.
9	ETH Zurich-Swiss Federal Institute of Technology Zurich	Switzerland
10	University of Chicago	U.S.

	Institution	Country
11	Johns Hopkins University	U.S.
12	Yale University	U.S.
13	University of California, Berkeley	U.S.
14	University College London	U.K.
15	Columbia University	U.S.
16	University of California, Los Angeles	U.S.
17	University of Pennsylvania	U.S.
18	Cornell University	U.S.
19	University of Toronto	Canada
20	Duke University	U.S.

43	University of Tokyo	Japan
88	Kyoto University	Japan

Source: Times Higher Education
<https://www.thewur.com>



TOEFL iBT Total Score Means

Geographic Region and Native Country	Total
<AFRICA>	
Mauritius	93
South Africa	99
<AMERICA>	
Canada	95
United States	88
Uruguay	94
<ASIA>	
China	78
Japan	71
South Korea	83
Pakistan	91
Singapore	97

Geographic Region and Native Country	Total
<EUROPE>	
Austria	99
Germany	97
Northern Ireland	100
United Kingdom	93
<MIDDLE EAST/NORTH AFRICA>	
Bahrain	86
Israel	92
Lebanon	86
<PACIFIC REGION>	
Australia	90
New Zealand	93

Note: Native country refers to the country of birth.

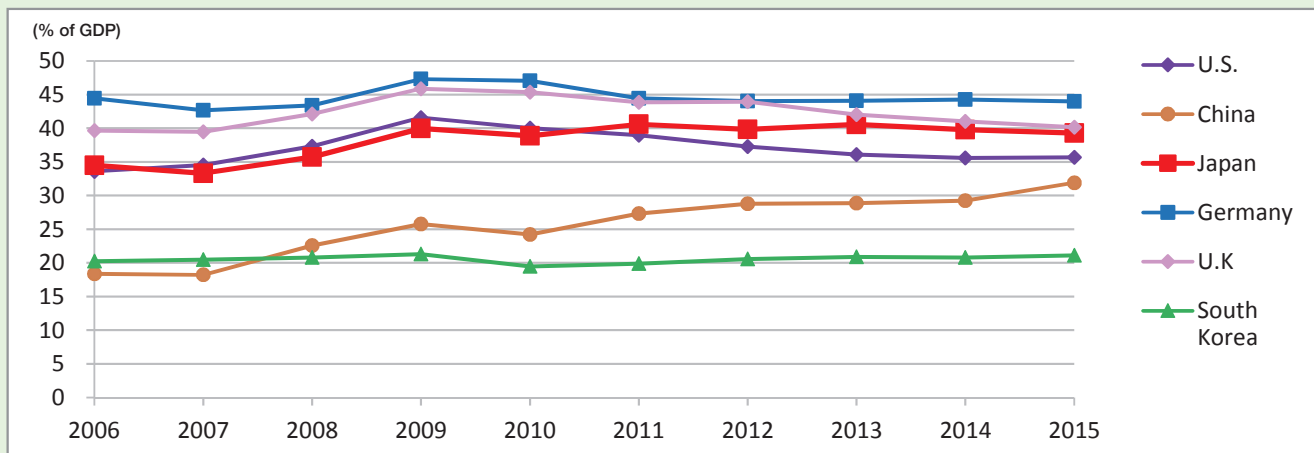
Because of the unreliability of statistics based on small samples, means are not reported for subgroups of less than 30.

Source: Educational Testing Service

<http://www.ets.org/toefl/research/>

5-1 General Government Spending to GDP

一般政府支出(对GDP比)



Note: Total expenditure consists of total expense and the net acquisition of nonfinancial assets.

Source: IMF

<http://www.imf.org/external/pubs/ft/weo/2016/01/weodata/weoselsr.aspx?c=924%2c134%2c158%2c112%2c111%2c542&t=6>

General Government Spending to GDP

(% of GDP)

	2006	2007	2008	2009	2010	2011	2012	2013	2014	2015
U.S.	33.6	34.5	37.3	41.6	40.0	39.0	37.3	36.1	35.6	* 35.7
China	18.4	18.2	22.6	25.8	24.2	27.3	28.8	28.9	29.3	31.9
Japan	34.5	33.3	35.7	40.0	38.9	40.6	39.8	40.6	39.8	* 39.3
Germany	44.5	42.7	43.4	47.3	47.0	44.4	44.0	44.1	44.3	44.0
U.K.	39.7	39.5	42.1	45.9	45.4	43.8	43.9	42.0	41.0	* 40.2
South Korea	20.3	20.5	20.8	21.3	19.5	19.9	20.6	20.9	20.8	* 21.1

Note: Total expenditure consists of total expense and the net acquisition of nonfinancial assets.

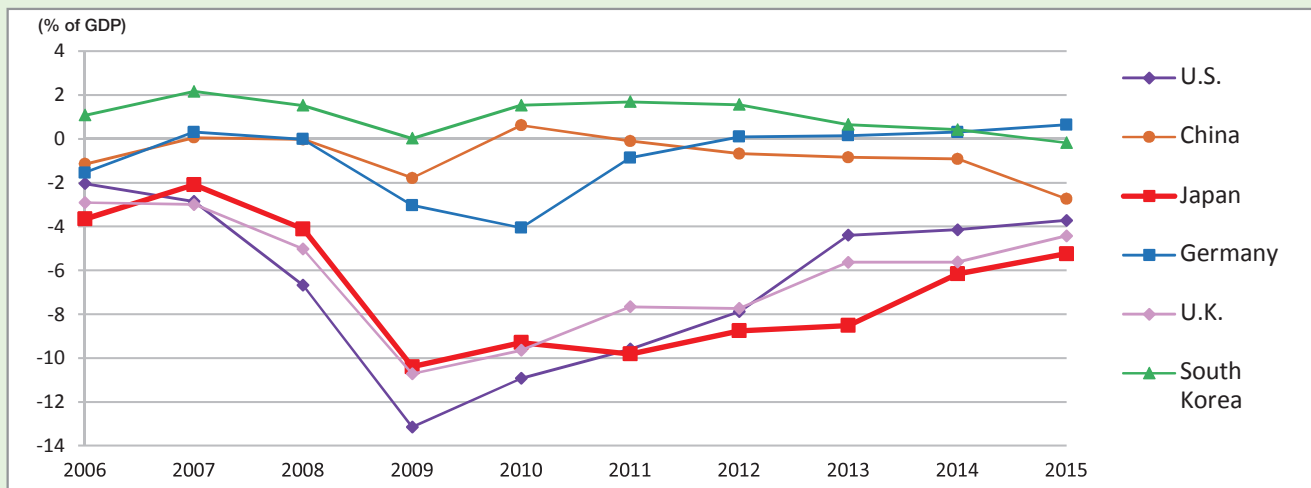
* estimate.

Source: IMF

<http://www.imf.org/external/pubs/ft/weo/2016/01/weodata/weoselsr.aspx?c=924%2c134%2c158%2c112%2c111%2c542&t=6>

5-2 Government Budget Balance to GDP

財政収支(対GDP比)



Note: Government budget balance is net lending/borrowing.

Source: IMF

<http://www.imf.org/external/pubs/ft/weo/2016/01/weodata/index.aspx>

Government Budget Balance to GDP

(% of GDP)

	2006	2007	2008	2009	2010	2011	2012	2013	2014	2015
U.S.	-2.04	-2.86	-6.68	-13.15	-10.93	-9.59	-7.88	-4.40	-4.14	* -3.72
China	-1.15	0.06	-0.03	-1.79	0.62	-0.10	-0.68	-0.84	-0.92	-2.74
Japan	-3.65	-2.09	-4.11	-10.39	-9.30	-9.81	-8.76	-8.52	-6.16	* -5.24
Germany	-1.55	0.31	-0.02	-3.03	-4.06	-0.86	0.10	0.15	0.31	0.64
U.K.	-2.91	-2.99	-5.03	-10.72	-9.64	-7.66	-7.74	-5.63	-5.62	* -4.43
South Korea	1.08	2.17	1.52	0.02	1.53	1.69	1.56	0.65	0.42	* -0.18

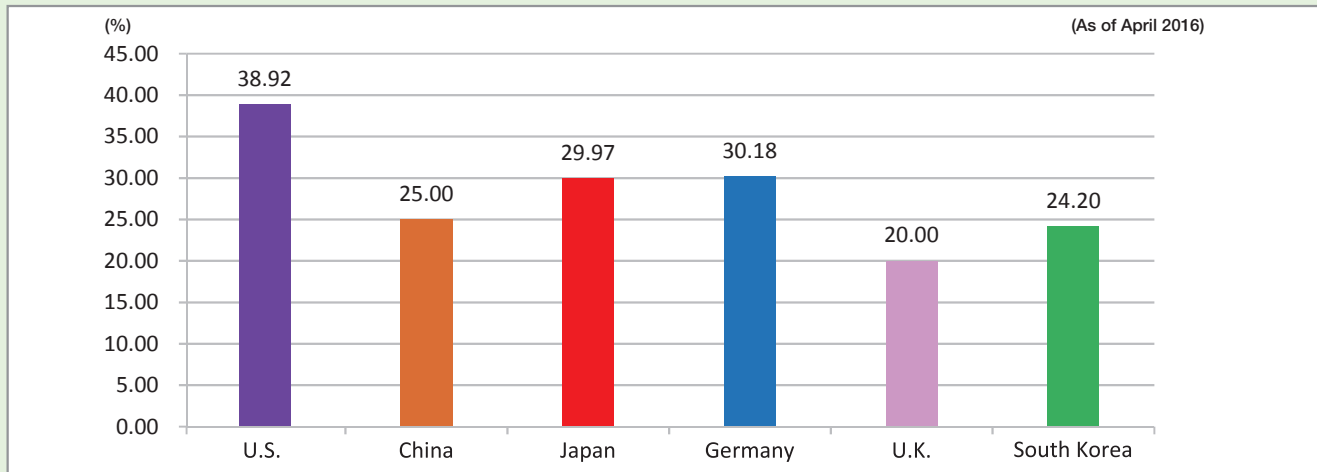
Note: * estimate.

Source: IMF

<http://www.imf.org/external/pubs/ft/weo/2016/01/weodata/index.aspx>

5-3 Effective Corporate Tax Rates

法人実効税率



Note: U.S. utilizes average state corporate marginal income tax rate. Japan and the U.K. have a non-calendar tax year.

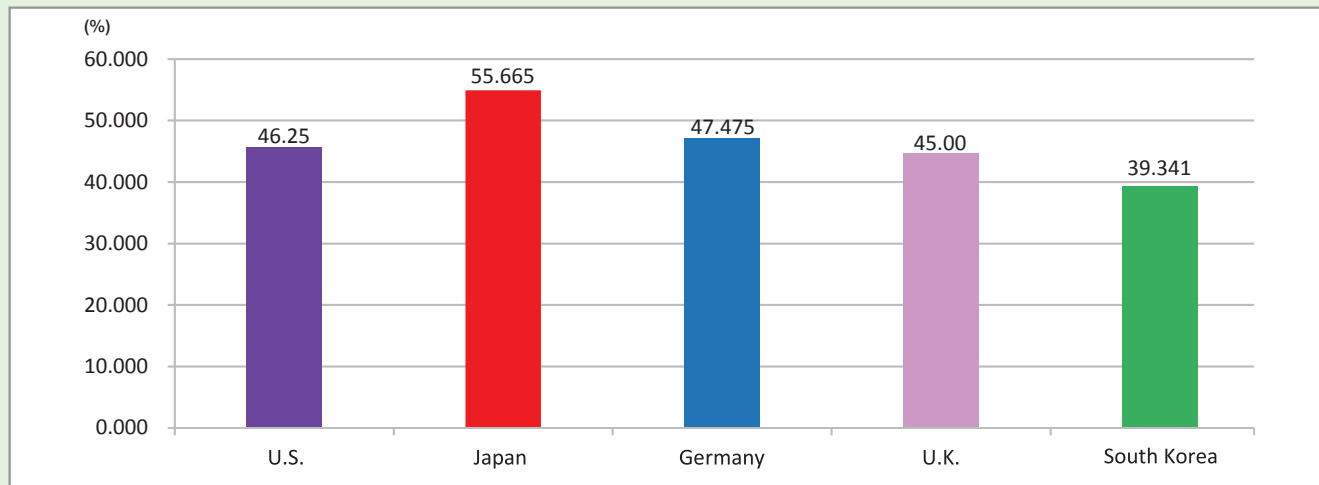
Source: OECD

<http://www.oecd.org/tax/tax-policy/tax-database.htm>

Ministry of Finance

https://www.mof.go.jp/tax_policy/summary/corporation/084.htm



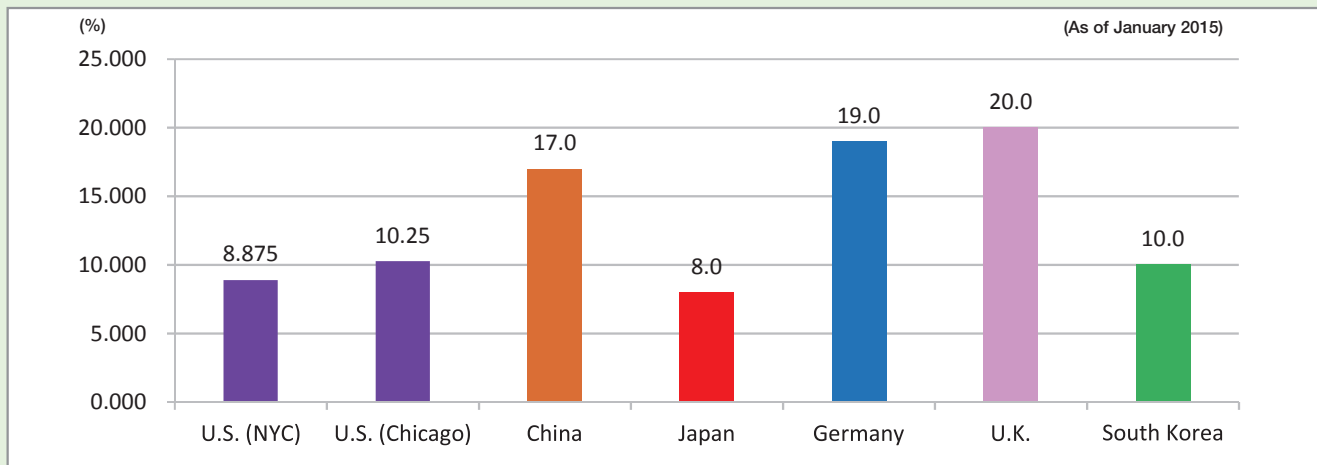


Source: OECD

<http://www.oecd.org/tax/tax-policy/tax-database.htm>

5-5 Value-Added Tax Rates

付加価値税率

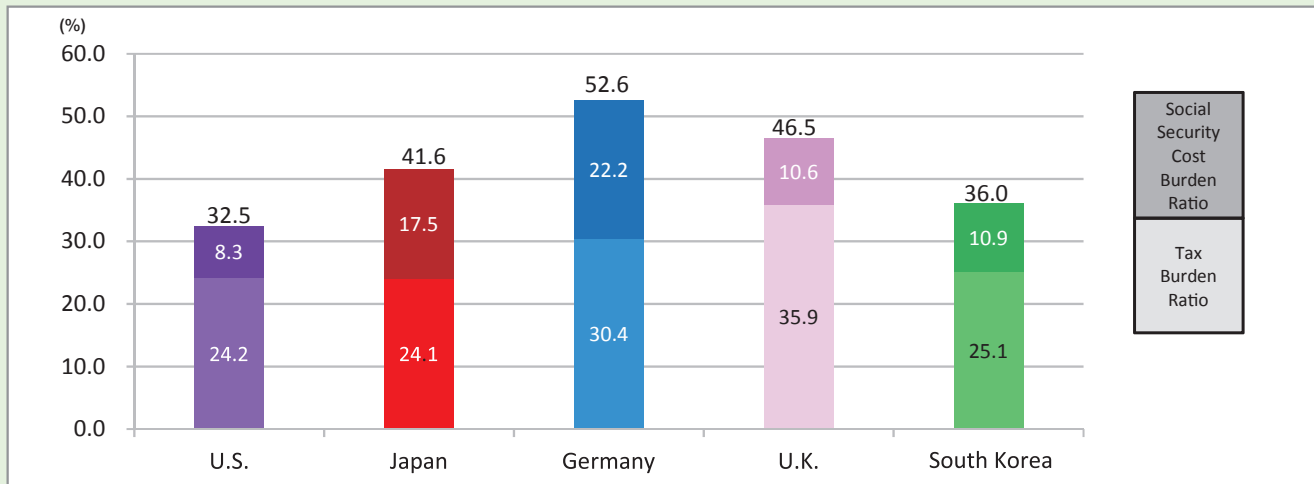


Note: U.S. rates are as of January, 2016.

Source: Ministry of Finance

https://www.mof.go.jp/tax_policy/summary/consumption/102.htm





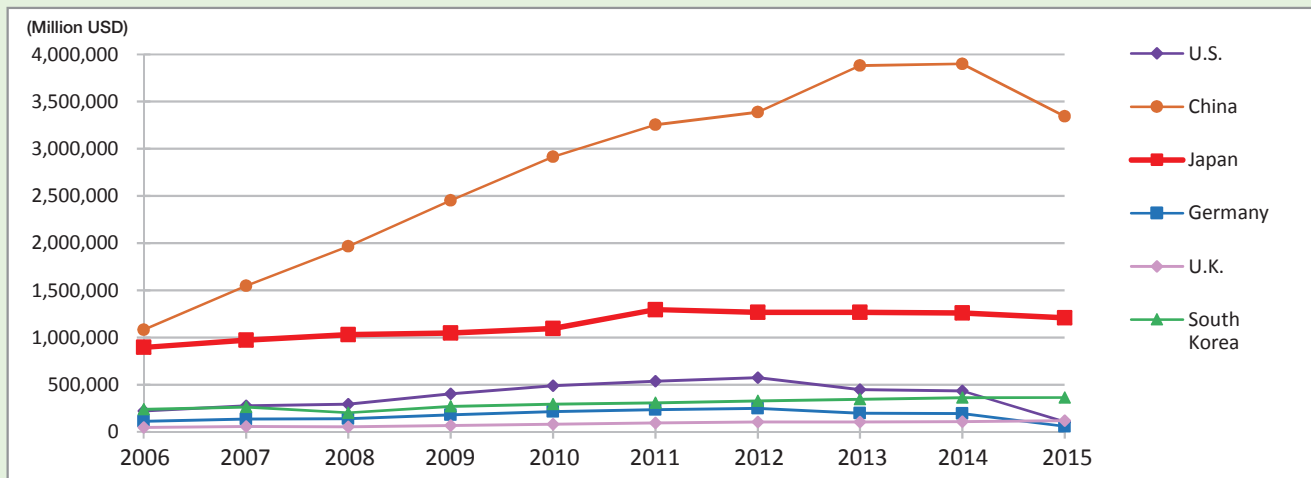
Note: National burden ratio is the proportion of tax and social security burden to national income.

Source: Ministry of Finance

https://www.mof.go.jp/tax_policy/summary/condition/238.htm

5-7 Foreign Exchange Reserves

外貨準備高



Note: Includes gold.

Source: World Bank

<http://data.worldbank.org/indicator/FI.RES.TOTL.CD>

Foreign Exchange Reserves

(Million USD)

	2006	2007	2008	2009	2010	2011	2012	2013	2014	2015
U.S.	221,089	277,549	294,046	404,099	488,928	537,267	574,268	448,509	434,416	106,540
China	1,080,756	1,546,365	1,966,037	2,452,899	2,913,712	3,254,674	3,387,513	3,880,368	3,900,039	3,345,194
Japan	895,321	973,297	1,030,763	1,048,991	1,096,069	1,295,839	1,268,086	1,266,851	1,260,680	1,207,019
Germany	111,637	135,932	138,564	179,040	215,978	234,104	248,856	198,535	193,485	58,507
U.K.	47,039	57,275	53,024	66,550	82,365	94,544	105,194	104,419	107,728	118,759
South Korea	239,148	262,533	201,545	270,437	292,143	306,935	327,724	345,694	362,835	363,149

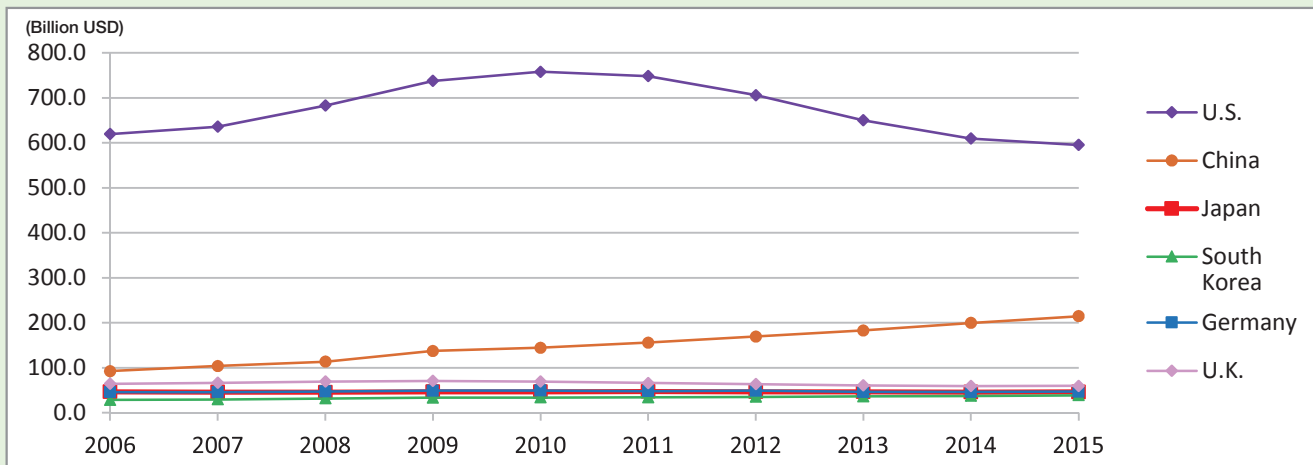
Note: Includes gold.

Source: World Bank

<http://data.worldbank.org/indicator/FI.RES.TOTL.CD>

5-8 Military Expenditure

軍事支出



Note: Figures are in billion USD at constant 2014 prices and exchange rates, except for the last figure, which is in billion USD at 2015 prices and exchange rates.
Figures of China are SIPRI estimates.

Source: SIPRI Military Expenditure Database 2015
<http://milexdata.sipri.org>

Military Expenditure

(Billion USD, % of GDP)

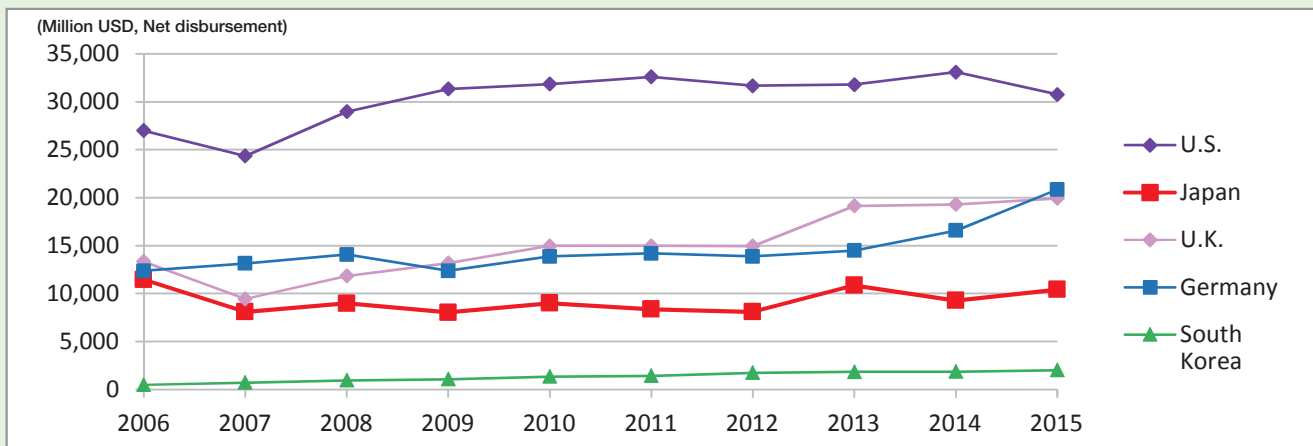
	2006	2007	2008	2009	2010	2011	2012	2013	2014	2015
U.S.	619.7 (3.8%)	635.9 (3.8%)	683.0 (4.2%)	737.7 (4.6%)	758.0 (4.7%)	748.6 (4.6%)	706.1 (4.2%)	650.1 (3.8%)	609.9 (3.5%)	595.5 (3.3%)
China	92.6 (2.0%)	103.7 (1.9%)	113.5 (1.9%)	137.4 (2.1%)	144.4 (1.9%)	155.9 (1.9%)	169.3 (1.9%)	182.9 (1.9%)	199.7 (1.9%)	214.5 (1.9%)
Japan	46.6 (1.0%)	46.0 (0.9%)	45.5 (1.0%)	46.4 (1.0%)	46.5 (1.0%)	47.2 (1.0%)	46.6 (1.0%)	46.4 (1.0%)	45.9 (1.0%)	46.3 (1.0%)
Germany	45.7 (1.3%)	45.8 (1.2%)	47.1 (1.3%)	48.9 (1.4%)	49.4 (1.4%)	48.0 (1.3%)	49.1 (1.3%)	46.3 (1.2%)	46.1 (1.2%)	47.0 (1.2%)
U.K.	64.3 (2.2%)	66.4 (2.2%)	69.3 (2.4%)	70.7 (2.5%)	69.2 (2.4%)	66.3 (2.3%)	63.4 (2.2%)	60.8 (2.1%)	59.2 (2.0%)	59.7 (2.0%)
South Korea	28.3 (2.5%)	29.5 (2.5%)	31.5 (2.6%)	33.5 (2.7%)	33.7 (2.6%)	34.2 (2.6%)	35.1 (2.6%)	36.2 (2.6%)	37.3 (2.6%)	38.6 (2.6%)
World total	1,491	1,548	1,634	1,745	1,774	1,779	1,774	1,746	1,746	1,760

Note: Figures are in billion USD at constant 2014 prices and exchange rates, except for the last figure, which is in billion USD at 2015 prices and exchange rates.
Figures of China are SIPRI estimates.

Source: SIPRI Military Expenditure Database 2015
<http://milexdata.sipri.org>

5-9 ODA (Official Development Assistance)

ODA純支出額



NOTE: Net means the total amount disbursed minus payments of interest.

The Republic of Korea became a member of DAC (Development Assistance Committee) as of January 1, 2010.

Source: OECD

<https://data.oecd.org/oda/net-oda.htm#indicator-chart>

ODA (Official Development Assistance)

(Million USD, Net disbursement)

	2006	2007	2008	2009	2010	2011	2012	2013	2014	2015
U.S.	26,983	24,340	28,969	31,340	31,854	32,585	31,672	31,793	33,096	30,765
Japan	11,453	8,086	8,980	8,032	9,003	8,357	8,084	10,854	9,266	10,418
U.K.	13,347	9,440	11,847	13,189	14,968	14,971	14,968	19,132	19,306	19,920
Germany	12,364	13,132	14,061	12,367	13,866	14,179	13,877	14,477	16,566	20,855
South Korea	482	704	941	1,061	1,341	1,427	1,733	1,835	1,857	2,011
DAC Total	122,107	112,841	125,750	127,595	134,497	133,170	128,119	135,329	137,222	146,676

NOTE: Net means the total amount disbursed minus payments of interest.

The Republic of Korea became a member of DAC (Development Assistance Committee) as of January 1, 2010.

Source: OECD

<https://data.oecd.org/oda/net-oda.htm#indicator-chart>

5-10 Gross Domestic Expenditure on R&D by Source (2014)

各国の研究開発投資(拠出元別)

(Million USD, % by sector)

	Total	Business enterprise	Government	Higher education	others
US (*)	456,977	278,091 (60.9%)	126,803 (27.7%)	15,240 (3.3%)	36,843 (8.1%)
China	368,732	278,101 (75.4%)	74,680 (20.3%)	0 (0.0%)	3,047 (0.8%)
Japan	166,861	128,924 (77.3%)	26,724 (16.0%)	9,250 (5.5%)	1,963 (1.2%)
Germany (*)	102,573	67,125 (65.4%)	29,844 (29.1%)	0 (0.0%)	5,604 (5.5%)
UK	44,174	20,531 (46.5%)	12,731 (28.8%)	554 (1.3%)	10,358 (23.4%)
South Korea	72,267	54,436 (75.3%)	16,595 (23.0%)	475 (0.7%)	762 (1.1%)

Note: (*) 2013.

Gross domestic spending on R&D is defined as the total expenditure (current and capital) on R&D carried out by all resident companies, research institutes, university and government laboratories, etc., in a country.

Source: OECD

http://stats.oecd.org/Index.aspx?DataSetCode=GERD_FUNDS



5-11 Land Area

国土面積

(km²)

1	Russia	17,098,246
2	Canada	9,984,670
3	U.S.	9,833,517
4	China	9,596,961
5	Brazil	8,514,877
6	Australia	7,692,024
7	India	3,287,263
8	Argentina	2,780,400
9	Kazakhstan	2,724,902
10	Algeria	2,381,741

11	Democratic Republic of the Congo	2,344,858
12	Saudi Arabia	2,206,714
13	Greenland	2,166,086
14	Mexico	1,964,375
15	Indonesia	1,910,931
16	Libya	1,676,198
17	Iran	1,628,750
18	Mongolia	1,564,116
19	Peru	1,285,216
20	Chad	1,284,000

Japan	377,930
Germany	357,340
U.K.	242,495
S. Korea	100,266

Note: Land area refers to total surface area.

Source: UN

<http://unstats.un.org/unsd/demographic/products/dyb/dyb2014.htm>

Japan and the World 2016/17

A Pocket Guide in Figures

Order copies by contacting Keizai Koho Center at
pocketguide@kkc.or.jp

Keizai Koho Center

(Japan Institute for Social and Economic Affairs)

Keidanren Kaikan 19F, 1-3-2 Otemachi

Chiyoda-ku, Tokyo 100-0004 JAPAN

URL: <http://www.kkc.or.jp/english/>

About Keizai Koho Center

Since 1978, Keizai Koho Center (Japan Institute for Social and Economic Affairs, KKC) has served as a bridge for the Japanese business community to interact with its key stakeholders inside and outside Japan. With a wide range of domestic and international programs, KKC has developed a worldwide network encompassing businesses leaders, lawmakers, government officials, journalists, university scholars, and school teachers.

Japan and the World 2016/17 英文国際比較統計集

2016年10月3日 初版第1刷

印刷所：光写真印刷株式会社

発行者：渡辺 良

発行所：一般財団法人経済広報センター

〒100-0004 東京都千代田区大手町1-3-2 経団連会館19階

電話: 03-6741-0031 FAX: 03-6741-0032

乱丁・落丁本はお取替えいたします。

ISBN : 978-4-87605-048-2

Chapter 1
**Economic and
Financial Indicators**

Chapter 2
**Population and
Labor Markets**

Chapter 3
**Trade and
Investment**

Chapter 4
**Education and
People Exchange**

Chapter 5
**Government Budget,
Tax and Other Data**



9784876050482



1920033010007

ISBN978-4-87605-048-2
C0033 ¥1000E

定価 本体 1000円 + 税

Printed in Japan